

**UNIVERSITY  
OF SALFORD**



University of  
**Salford**  
MANCHESTER

**UNDERGRADUATE**

SEE WHAT  
WE'RE ALL  
ABOUT  
~~STUDY~~ **GUIDE**

**BECOME  
UNSTOPPABLE**

2026

# OUR NOTHING- OFF- LIMITS **STUDY GUIDE** 2026



## IT STARTS HERE

### WELCOME

04 A city of firsts

## HERE, BEYOND, TOGETHER

10 Future developments

12 Our partnership

14 Sustainability on campus

## THE ESSENTIALS

### OUR CAMPUS

18 Our location

20 What's on campus

22 Our facilities

30 Food and drink on campus

32 Our student accommodation

34 Commuting from home

### STUDENT LIFE

40 Student support services

44 Explore Salford and Manchester

48 Our Students' Union

### APPLYING, FEES AND FINANCE

58 How to apply

60 Fees and financial support

### OUR COURSES

70 Entry requirements

74 Why choose Salford?

# IT STARTS HERE

Salford – a city of *Arsts* and a city with over 150 years' history of making things happen.

The University is proud to play a key part in the city's history and its future.

On our *PEEL PARK* campus, you'll find (you guessed it) Peel Park, a beautiful green space which, in 1846, was the first public park in the UK funded entirely by people's subscriptions.



We have a global alumni community of 218,000+ members based in over 200 countries or territories. Many of them volunteer their time to support our students and local projects within Salford and Greater Manchester.

94% of our graduates go on to further study or employment\*<sup>1</sup>.



The *SALFORD MUSEUM AND ART GALLERY*, when originally opened as the Royal Museum and Library in 1850, was the first free museum and public library in Britain.

We were one of the first universities to offer work placement 'sandwich degrees' in 1949.

Ranked 57<sup>th</sup> nationally in the 2024 English Higher Education Social Mobility Index. The index measures the social distance travelled by socio-economically disadvantaged graduates from English higher education providers\*<sup>4</sup>.

Rated the *BEST* university in the Greater Manchester for entrepreneurial impact\*<sup>3</sup>.



The weekend was invented in Salford! In 1843 the campaign for free time on a Saturday began here and is now celebrated annually with the 'We Invented the Weekend' festival at MediaCity.



\*1. University of Salford analysis of the Graduate Outcomes survey 2021-22

\*2. Gateways to Growth report by Octopus Ventures [octopusventures.com/reports/gateways-to-growth](https://octopusventures.com/reports/gateways-to-growth)

\*3. [hepi.ac.uk/2024/12/03/social-mobility-index-2024](https://hepi.ac.uk/2024/12/03/social-mobility-index-2024)





# SEE OUR BEST SIDE EVERY SIDE OF SALFORD



## COME AND MEET US AT ONE OF OUR OPEN DAYS

You can join us on

**Saturday 14 June 2025**

**Saturday 4 October 2025**

**Saturday 8 November 2025**

**Saturday 13 December 2025**

There will be guided tours, course presentations and opportunities to meet our academics and students.

To find out more and to  
book your place, visit  
**[salford.ac.uk/opendays](https://salford.ac.uk/opendays)**

OUR OPEN  
DAY IS LIKE  
EVERY  
**OPEN DAY**



In the meantime, you can  
explore Salford through  
our virtual hub



# HERE, BEYOND, TOGETHER

We've got ambitious plans for the future, striving for better outcomes for our students and community.

We work together with local, national and global partners to help us achieve our ambitions and benefit our students.



# INVESTING IN YOUR FUTURE

We're proud of our community and have ambitious plans for the future of the University.

Together with our partners, we're transforming our campus and the surrounding area through our multi-million-pound Campus Connectivity Plan. This will create an exciting new city district that will bring together industry, education and innovation, and will benefit our students for decades to come.

## ON CAMPUS

### ACOUSTICS BUILDING

The Acoustics Building will provide the University with state-of-the-art testing facilities and will house the teaching, research and commercial activities of our Acoustics Department. The proposed scheme, if granted permission, will be 1,300sqm, with a mixture of single and triple height spaces internally. The new building will help us deliver world-class research to support companies, charities and the public sector to create a better sounding future, as well as ensure our students and researchers are learning in world-class facilities.



### HEALTH BUILDING

We're creating a brand-new health and wellbeing hub at the heart of the University and the local community.

It will be the home of teaching, practice and research facilities for some of our most popular healthcare courses - including podiatry, prosthetics and orthotics, sport rehabilitation, occupational therapy and sport science. The new site will also provide public health services for the local community.

The all-electric building will meet high sustainability standards - incorporating solar panels, rainwater harvesting and new cycle parking facilities. It will offer outdoor roof space and terraces, with areas to relax in and enjoy, as well as a daylight-flooded atrium and plenty of indoor planting to enhance the sense of wellbeing and healthy living. Larger spaces will be bookable by community groups, staff and students for therapeutic activities.

Building work is underway and the target for completion is autumn 2026.



A computer generated image of the new health building on our Frederick Road campus.

## LOOKING AHEAD

Our Campus Connectivity Plan is part of a wider long-term vision for Salford over the next 20 years, which will see the regeneration of Salford Crescent – where our Peel Park and Frederick Road campuses are located. The work is being developed in partnership between the University, Salford City Council and the English Cities Fund.

### SALFORD RISE

At the heart of the ambitious regeneration is a near five-acre elevated walkway spanning Frederick Road which will act as a key gateway between our campus and the new Crescent Innovation Zone development, which will feature new homes, commercial space and improvements to public spaces. Set to stand at 11 metres wide and 220 metres long, the walkway encourages accessible and active travel. There will also be large areas of new, green spaces, trees, planting and public squares for pop-up events and festivals.

Work on the bridge structure is expected to begin in early 2025 and complete in summer 2026.



2026 also marks the 100 year anniversary of Salford officially becoming a city, with a programme of local events and celebrations taking place throughout the year.

### SALFORD CRESCENT TRAIN STATION

Network Rail are set to build a third platform at Salford Crescent station, a key transport hub located between our Peel Park and Frederick Road campuses.

The new, extra platform will improve passenger flow and reduce train delays by allowing more flexibility for trains travelling through central Manchester and across the country, meaning easier travel for our students.



# OUR PARTNERSHIPS

From our unique position at the heart of the community, we empower those around us to transform the everyday lives of people in Salford and beyond.

## DEVELOPING CREATIVITY AND INNOVATION

We work with partners to deliver local cultural events such as the We Invented the Weekend Festival at MediaCity, where we collaborate with the BBC, The Lowry, Salford City Council and Greater Manchester Combined Authority. We're also involved in the annual Sounds from the other City Festival, celebrating new music and art at venues on campus and across Salford, including performances and exhibitions at Peel Park and Castlefield Gallery, all supported by 35 student placements.

We also have local creative studio partners at Islington Mill, Paradise Works and Hot Bed Press to support emerging talent and established artists through our Graduate Scholarship Programme.

Using our facilities and academic expertise, our research partnerships with businesses, sports clubs, charities and policy makers, are influencing positive and lasting change.

Our range of partnerships also create opportunities for students through professional placements, influential guest speakers on our courses, and investment in our facilities and scholarships.

From local companies to global names, not-for-profit organisations to commercial giants and almost everything in between, we believe we can achieve more together.

Here are just a few examples of our strong partnership successes.



## ENABLING HEALTHY LIVING

We're one of the largest training providers of nurses, midwives and allied health professionals for the NHS and work with NHS Trusts across Greater Manchester. Alongside our existing Centre for Medical Imaging, and our brand-new health clinic building coming soon, our facilities will also be used by the NHS to provide clinical services to the local community.

Academics at the University have worked closely with shoe company Clarks to better understand children's foot biomechanics and support the product development of new children's shoes.

Staff from Sale Sharks Rugby Union Club, Salford Red Devils Rugby League Club, and British Wrestling, have studied on our MSc and PhD courses in our School of Health and Society and the Salford Business School. We also play a key part in pre and post season testing and management of the players, alongside the rugby clubs' medical and scientific staff, using our advanced research and testing facilities.

## BUILDING PROSPERITY AND EQUITY

As well as our involvement in training staff and players at Salford Red Devils Rugby League Club, we work together on delivering community outreach programmes, including on-campus sports events for local children.

A partnership between the University of Salford, the University of Manchester and IntoUniversity, the UK's largest university-access charity, created a new education centre for students aged 7-18 in central Salford. The centre focuses on helping students from underrepresented communities gain access to higher education and provides educational support to young people from disadvantaged backgrounds.



## IMPROVING THE ENVIRONMENT AND SUSTAINABILITY

We have strong links with property developer Barratt Developments Plc, who, as well as being a leading investment partner in our Energy House 2.0 building, to develop and test zero carbon homes, have also supported students to study at Salford through their Barratt Developments Sustainable Housing Scholarship.

A project team at Energy House 2.0 also collaborated with homelessness charity Emmaus Salford and building firm Casey to develop new energy-efficient sleeping pods for people who are street homeless, using our environmental chambers to test the prototype pods under a variety of simulated weather conditions.



Find out more about our employer partnerships and professional placements on page 66.





# SUSTAINABILITY AT SALFORD

Climate change is one of the biggest challenges facing society. As one of the largest organisations in Greater Manchester, with over 20,000 students and 2,500 staff across 27 buildings and around 70 hectares, we are aware of our impact on local, national and international environments.

Our vision is that by embedding sustainability in all aspects of university life, we will enable our University community to have a great place to study, live, work and relax, all whilst ensuring we are managing our social and environmental impact.



We're a platinum accredited hedgehog friendly campus. We work hard to ensure our campuses are places where hedgehogs can safely live and thrive!



## IGNITION GREEN WALL

Our living lab, located on our Peel Park campus, is home to the living green wall. Consisting of four different planted sections that include biodiversity, seasonal, pollinator, edible – this mass of plant life and soil helps utilise excess rainwater from across the University and attract more biodiversity to the campus.

## ENERGY HOUSE LABS

Salford's Energy House is a unique research and testing laboratory which comprises an early 20th century two-bedroom terrace house within an environmental chamber. Over the last ten years, research here has led to important changes in the way that UK housing becomes more energy efficient.

In February 2022, we opened Energy House 2.0 which features two environmental chambers, to enable us to carry out even more research and testing into the design and construction of environmentally sustainable housing (see page 29).

## PEEL PARK

Situated right on our doorstep sits the green haven of Peel Park, which is a perfect escape from city life. Bringing tranquility to our campus, Peel Park is perfect for a summer picnic, early morning jog or leisurely stroll to clear your head in between lectures.

## PEOPLE AND PLANET AWARD

In 2024, the University ranked 8th out of 149 UK institutions and received a First-Class award in the People and Planet's University League. Salford was named as one of the UK's most sustainable universities based on criteria including energy sources and waste to sustainable food and education for sustainable development.

## GREEN FLAG AWARD WINNERS 2024

For the sixth year running, Salford received the prestigious Green Flag award, with our campus having been recognised and rewarded for being a well-managed outdoor green space.



## COMMUNITY GROWING SPACE

With our local community and students' wellbeing in mind, we run a Community Growing Space on campus. Located behind Clifford Whitworth Library, and with beautiful views of Peel Park, in this space you'll find planters filled with herbs and flowers, resting spots for meditation and outdoor meetings, a birdhouse and bird feeding station.

## GETTING INVOLVED

If you want to help make a difference at Salford, there are plenty of volunteering opportunities available from signing up to our sustainability engagement programme Green Impact, to joining the Wildlife Society or attending our annual Go Green Salford event.

Find out more at [salford.ac.uk/environmental-sustainability/be-sustainable](https://salford.ac.uk/environmental-sustainability/be-sustainable)

"Our aim is to have a green and welcoming campus which supports students in their journey at university."

**MARTA STRZELECKA**  
Environmental  
Management Coordinator

Learn more about Salford's sustainability strategy at [salford.ac.uk/sustainable-strategy](https://salford.ac.uk/sustainable-strategy)



# THE ESSENTIALS

"I chose to study at Salford because everything about the University just seemed spot on! The campus layout, accommodation, course structure, locality, academic support and extracurricular opportunities - Salford has it all - and I knew it was where I wanted to study."

**SIDNEY**  
LLB (Hons) Law with Criminology



# OUR LOCATION

There are many things that make the University of Salford unique, but our location is one of the things that really sets us apart.

Salford is part of Greater Manchester; a thriving, diverse city-region in the north-west of England and home to some of the friendliest and most open people you'll meet. There's an entrepreneurial spirit here - we've got big ideas and we make them happen.

But we also know how to have fun - with some of the

greatest sports, culture, and music scenes in the world, Salford and Manchester are home to anyone who loves to work hard and play hard.

Our main campus is just 2km from Manchester city centre, and our MediaCity campus shares a skyline with the BBC and ITV. Everything you need for an outstanding university experience.



## BEYOND THE CITY

The north-west of England is home to varied cities, relaxing countryside, and unique coastline. With great transport links, Salford is ideally situated for exploring everything the region has to offer.

In less than an hour you can enjoy the shops, bars, restaurants and cultural sights of cities Liverpool, Chester and Preston. If a day outdoors is more your thing, the seaside towns of Blackpool and Morecambe or the market towns and national parks of the Lake District and Peak District can be reached in under two hours.

You'll never find yourself short of something to do here, whatever your interests.



▲ Lake District



**LIVERPOOL**  
50 MINUTES

**LEEDS**  
1 HOUR

**BIRMINGHAM**  
1.5 HOURS

**LAKE DISTRICT**  
1.5 HOURS

**LONDON**  
2 HOURS

**EDINBURGH**  
3.5 HOURS

**EXETER**  
4.5 HOURS



**BELFAST**  
1 HOUR

**DUBLIN**  
1 HOUR

**DISTANCE FROM...**



**WHERE IS SALFORD?**  
Discover our location



# WHAT'S ON CAMPUS

The University of Salford offers you the best of both worlds; a campus setting just minutes from a world-class city.

Our buildings and facilities are split across our three campuses, just a short distance from each other.

## PEEL PARK

Our Peel Park campus offers state-of-the-art learning facilities set against beautiful green spaces to relax and socialise in.

On this campus you'll find the best of old and new, with our new Science, Engineering and Environment building, as well as our futuristic New Adelphi building - the home of our art, design, music, performance and fashion subjects.

Equally as eye catching though is the impressive Peel building, which opened in 1896 and is one of our founding buildings.

"The friends I have made here at Salford feel like family to me. From getting a quick coffee from The Old Fire Station across the road, to booking rooms for hours in the library to sit down and get our assignments done, Salford really feels like home."

### NEHA

BSc (Hons) Business Management with IT (now called Business Information Technology)

## FREDERICK ROAD

Frederick Road campus is where all our health and social science courses are delivered. It houses an impressive range of facilities, including a radiography centre, psychology testing lab, a world-class human performance laboratory, and working clinics for prosthetics and orthotics, podiatry, and sport and rehabilitation.

Here you'll also find our simulation suites which include a midwifery clinic with birthing simulators, a replica hospital environment, counselling suites, and an occupational therapy rehabilitation flat.



## MEDIACITY

As the home of TV, digital and creative businesses in the north, including the BBC and ITV, our MediaCity campus is the ideal location for students on our media, gaming and journalism courses.

Our university building houses a blend of traditional and digital facilities, designed with industry, to create a state-of-the-art teaching and learning environment.

Take a look  
at our campus  
highlights





# OUR FACILITIES

We have a long history of providing people with the tools they need to succeed. We invest heavily in our facilities to ensure you're using industry-standard equipment during your studies, meaning you'll graduate with a working knowledge of the practical concepts that you'll be faced with day to day. We've got ambitious plans for the future too, and our campus continues to evolve and grow.

Our doors are also open to industry, and you'll often brush shoulders with staA from commercial organisations using our facilities for testing products or training their staA. Here's just a taster of some of the facilities on campus...



## SILKS LAW CLINIC

Our in-house law clinic, SILKS, offers free legal advice to members of the public. Working under the supervision of professional lawyers, our law students develop their legal knowledge and client-facing skills through the clinic. Find out more at [salford.ac.uk/our-facilities/silks-law-clinics](http://salford.ac.uk/our-facilities/silks-law-clinics)

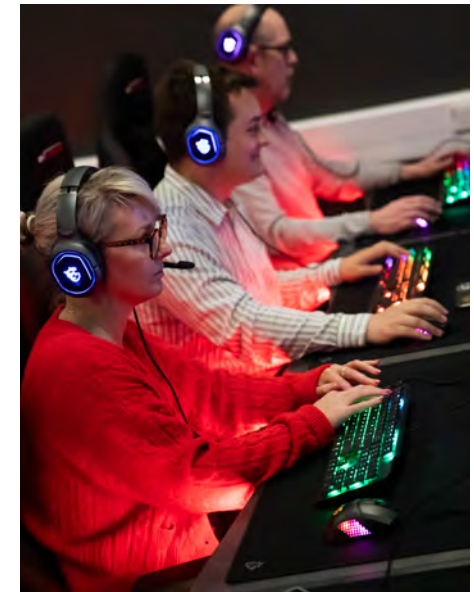
## MEDIA SUITE

Featuring the latest broadcasting tech, the suite offers Business students an upgraded space and tools to enhance their digital skills, ensuring a standout presence in the global job market.



## BUSINESS SIMULATION SUITES

Our Business School simulated learning suites offer a range of technologically enhanced spaces to enrich your learning. These digitally-powered spaces facilitate live projects and discussions, and provide access to tools such as digital whiteboards, gameplay applications and VR headsets.



## ESPORTS LAB

Our bespoke Esports Lab provides an immersive experience for our Esports Business Management students. Equipped with the latest gaming and broadcasting equipment, the lab is designed to support students looking to pave the way in this rapidly expanding and innovative sector.



Scan to find out more about Salford Business School's facilities







## ART, DESIGN AND FASHION

Our specialist workshops include traditional model-making facilities, advanced CNC machines (3D printers, laser cutters and milling) and a printing lab with a huge selection of specialist equipment including screen printers, lithotables, fabric printers, etching presses, fashion and textiles workshops and felt looms.

For photographers, we have seven fully-equipped professional studios complete with lighting equipment, a darkroom, the latest cameras and accessories, and large-format digital printers. There are plenty of social spaces too, with a gallery area, a large lobby for exhibitions, and a café and bar.



## PERFORMANCE AND DANCE

You can stage live shows in our large, 350-capacity theatre, record scenes in our 100m<sup>2</sup> TV studio complete with professional rig, three camera set-up and high-quality standard set, and explore the possibilities of virtual worlds in our Motion Capture studio. Eight performance studios provide lots of rehearsal space, and dancers will enjoy two large studios with sprung floors, full-length mirrors, ballet barres, natural light and in-built PA systems.



## MUSIC

Our large band room in our New Adelphi building has enough space for a concert piano, a full orchestra or a full ensemble. It includes full recording facilities for live performances, a listening room, a surround-sound studio and a sound and music design suite. All studios feature grand or upright pianos, guitars and basses and professional drum kits, as well as synthesisers and drum machines.



Scan to find out more about our art, design and performance facilities



## MEDIA AND BROADCASTING FACILITIES

Students studying at MediaCity on our media, film, TV and digital courses have access to industry-standard production and editing suites, world-class TV studios with virtual 3D sets and green screens, as well as a journalism centre with newsroom and live animation booths.

Being based in one of the country's leading digital and creative hubs also means that our students are ideally placed to take advantage of industry placement and collaboration opportunities.



Tour our creative spaces at MediaCity







## ANECHOIC CHAMBER

One of a select few found in the world, our anechoic chamber provides students, researchers and industry partners with a unique acoustic environment.

Regarded as the quietest place in the north-west, this room is ideal for testing microphones, musical equipment and quiet products. Once you enter the chamber and close the doors, it's said that you can even hear your blood circulating!



## THE MAKER SPACE

The Maker Space is a campus facility for digital fabrication and additive manufacturing. Students and staff have full access to our equipment, including 3D printers, laser cutters, vinyl cutters and clean working spaces for testing, metrology and assembling projects. There is also a dedicated computer suite for 2D and 3D design (CAD) and electronics work benches.

The Maker Space includes the Morson Engine Room, a heavy duty workshop with industrial grade machinery fitted with a waterjet cutter, 5-axis CNC mill, CNC lathe, CNC router and welding station, that supports industry-standard methods of production.

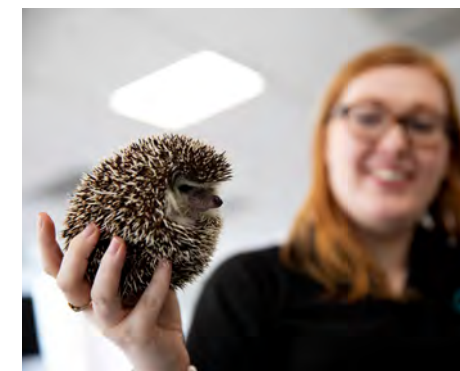
Powered by Morson Group



## BODMER LABORATORY

The Bodmer Lab, named after Sir Walter Bodmer, the British scientist behind the mapping of the human genome, is our multi-million pound hub for students studying biology, biomedical sciences, chemistry and wildlife-related courses.

Equipped with a sophisticated AV system and network of screens, the space is designed to ensure that students can clearly see and hear the lecturers and technicians from wherever they are situated.



## ENERGY HOUSE 2.0

Energy House 2.0 is a world-leading energy performance test lab, comprising two environmental chambers each able to accommodate two detached houses. This unique research facility can test the energy performances of buildings in a variety of categories in any climate and temperature, ranging from  $-20^{\circ}\text{C}$  to  $+40^{\circ}\text{C}$ , as well as recreating gale force winds, rain, snow, ice and solar gain. Working in close partnership with industry, Energy House 2.0 will play a key role in accelerating the progress towards low carbon and net zero housing design and builds upon the success of the original Energy House Laboratory, which opened in 2012.



Scan to find out more about facilities at the School of Science, Engineering and Environment





## PROSTHETIC AND ORTHOTICS FACILITIES

Students of Prosthetics and Orthotics are taught hands-on clinical practice while dealing with real patients in our custom-designed clinic rooms. Further practice is undertaken in our workshops which boast a well-equipped machine room with CAD/CAM facilities and the plaster room where impressions of patients' anatomy can be modified for the subsequent manufacture of custom-made prostheses or orthoses.

Students also have the opportunity to conduct motion analysis in one of three movement laboratories.



## PODIATRY CLINIC

Our students use our on-site clinic to provide a wide range of treatments to members of the public. The clinic houses an orthoses suite with workshops, computer-aided design and manufacturing facilities, a gait examination room and lab, private treatment rooms and teaching spaces.



## SIMULATION SUITES

The simulation suites on our Frederick Road campus allow our health students to experience realistic scenarios in a safe and supportive environment.

Set up to replicate a hospital ward, the suites are equipped with all the equipment and props required, including high-tech computer-controlled manikins that can be used to simulate complex healthcare scenarios.

As part of the simulation suites, we also have a realistic home environment featuring two bedrooms, a kitchen, living room and bathroom and two 360° immersive simulation rooms, allowing students to be immersed in any virtual environment.



## PSYCHOLOGY LAB

Our Psychology Laboratory provides a comfortable and highly equipped environment for conducting a wide range of psychological assessments. The lab features private meeting rooms, an observation suite with a control room, and breakout spaces, all equipped with industry-standard technology and software.



Scan to find out more about facilities at the School of Health and Society

## MEDICAL IMAGING CENTRE

Our Medical Imaging Centre has recently undergone massive redevelopment thanks to a £2.5 million investment from a collaboration with GE Healthcare, enabling the University to become nationally and internationally recognised in this field.

With unrivalled clinical and simulation facilities, it is home to a CT scanner, static and mobile digital X-ray systems and five ultrasound scanners. The Centre also includes a 3D full field digital mammography system, dental imaging systems and intelligent ultrasound simulators.

## HUMAN PERFORMANCE LAB

Our Human Performance Laboratory contains almost every type of physiological, performance analysis and biomechanical testing equipment, including industry-standard hardware and software for performance analysis such as HiPod filming equipment, Sportscodes, Wyscout, and Nacsport. The Lab also contains a 30 metre sprint track with inbuilt force platforms, motion capture systems, blood and gas analysis equipment and speed guns, ensuring our sports students gain hands-on experience in a test environment.





# FOOD AND DRINK ON CAMPUS

If you fancy a coffee, snack, main meal or sweet treat while on campus, we offer a range of food and drink options to suit all tastes, and cater for halal, gluten free, vegan and vegetarian diets.

There are plenty of options for delicious food and drink across our three campuses. Whether you need to grab something on the go between lectures, want a catch up over a coffee, or are looking for somewhere to meet for food and drinks at the end of the day, we have it covered.

We have our own head chef and catering team who regularly create new menus, from traditional favourites with a Salford twist, and a range of international dishes from around the world, to tasty small plates ideal for sharing (or not!). Food is prepared freshly on site, with locally sourced ingredients, and caters for all dietary requirements.

You'll also find convenience stores on Peel Park and Frederick Road campuses, where you can pick up snacks and groceries.

Visit [salford.ac.uk/eat-and-drink](https://salford.ac.uk/eat-and-drink) to find a full list of our Eat and Drink on Campus outlets\*.

## THE OLD FIRE STATION

The former fire engine bays of Salford's Old Fire Station building are now home to a micro-brewery, bakery, café and bar. The historic venue has been renovated by the University to create an indoor café area with on-site bakery, outdoor seating on the terrace, a dedicated bar, and our very own Lark Hill Brewery. The café serves brilliant brunches, freshly made sandwiches and salads, while the bar offers Lark Hill beers specially brewed in-house.

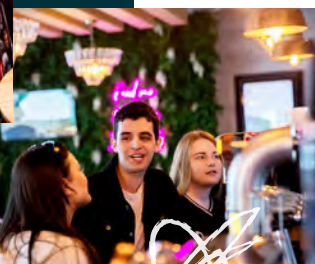
For more information, follow their socials @oldfiresalford, or visit [arestationsalford.co.uk](https://arestationsalford.co.uk)



## ATMOSPHERE

Part of the Students' Union on Peel Park campus, Atmosphere is a social space open every day until late, serving up amazing food and drink at student-friendly prices – perfect for a quick bite to eat or chill after a hard day's study. Atmosphere also has regular themed nights throughout the week, including a Monday night Quiz, Wednesday night Comedy Night and Thursday night Bandaoke\* with a live karaoke band! Also part of Atmosphere is the outdoor Coffee Hut, based just behind our University House building, where you can grab a coffee on your way to class.

\*Food and drink options, events and opening times correct at time of publication (January 2025).







# MAKE YOURSELF AT HOME

Living in student accommodation is a great way to get settled into university life, meet new people and immerse yourself in the student experience.

In partnership with Campus Living Villages (CLV), we offer accommodation exclusively for University of Salford students at Peel Park Quarter.

## PEEL PARK QUARTER

Peel Park Quarter is our thriving student village at the heart of our Peel Park campus. It offers a safe, supportive and social environment where you can make new friends, join in with weekly events and become part of our vibrant student community.

You'll be a stone's throw from learning spaces, the library, Students' Union and campus shop. All rooms come with an en-suite, desk, chair, and small double bed with under-bed storage. Prices start at £162\* per week for a 42 week contract.



- |  |  |
|--|--|
|  Wifi                 |  Cinema room        |
|  Utility bills        |  Security and CCTV  |
|  Gym                  |  Cycle storage      |
|  Paid on-site parking |  Contents insurance |
|  Social spaces        |  Reflection room    |
|  Laundry room         |  Study Room         |

\* The rate displayed is for the 2025/26 academic year and can vary depending on room type and tenancy length. The rate displayed is accurate at the time of print (January 2025) but could change.

You can find out more about our accommodation at one of our Open Days. See page 7 to book.

## HOW TO APPLY

For Peel Park Quarter, places open for booking each spring (of the year you are joining us) and we'll contact all applicants when this happens to let them know when to apply.



## OTHER ACCOMMODATION OPTIONS

With several other student halls within 15 minutes of each of our campuses, you are spoilt for choice! Our nearby student halls cater to a variety of needs, including modern en-suite rooms, budget-friendly shared bathroom flats, and self-contained studios.

You can find a handy list of local options on our website, along with our top tips to help you find the right accommodation and avoid any issues. For a full overview of your accommodation options, visit [salford.ac.uk/accommodation](https://salford.ac.uk/accommodation)





# COMMUTING FROM HOME

You can easily reach our three campuses via public transport. If you're planning to travel to campus from home, take a look at some examples of the easiest ways to get to us from around Greater Manchester. To plan your speciĀc journey from home visit [tfgm.com/plan-a-journey](https://www.tfgm.com/plan-a-journey)

Get 1/3 off the cost of your train travel with a 16-25 railcard

## WIGAN TRAIN

**Route:**  
 / Direct train service to Salford Crescent  
 / Up to three trains an hour  
**Journey:**  
**36 minutes**

Young care leavers aged 18-21 are eligible for free bus travel across Greater Manchester.

Students can buy termly bus tickets to travel anywhere across Greater Manchester with Bee Bus Student tickets, and also get reduced fares on a 7 day and 28 day Bee AnyBus Ticket.

## BOLTON TRAIN

**Route:**  
 / Direct train service to Salford Crescent  
 / Up to four trains an hour  
**Journey:**  
**15 minutes**

## TRAFFORD BUS

**Route:**  
 Catch the X50 bus towards Manchester Piccadilly and get off at the Imperial War Museum North for our MediaCity campus  
**Journey:**  
**6 minutes**

## SALFORD BUS

**Route:**  
 Catch any 'V' bus towards Manchester and get off at our Frederick Road or Peel Park campuses.  
**Journey:**  
**25 minutes**

Purchase a 1-day anytime travelcard for £7.10 for use throughout all tram zones

## BURY TRAM

**Route:**  
 / Take the tram towards Manchester Piccadilly or Bury  
 / Change at Cornbrook for a tram heading to MediaCity  
**Journey:**  
**1 hour 5 minutes**

## ROCHDALE TRAIN

**Route:**  
 / Direct train service to Salford Crescent  
 / Up to three trains an hour  
**Journey:**  
**25 minutes**

## OLDHAM BUS

**Route:**  
 / Take a bus to Manchester Piccadilly  
 / Change here and catch the 36 bus towards Bolton. Get off at our Peel Park or Frederick Road campuses  
**Journey:**  
**1 hour**

## TAMESIDE BUS

**Route:**  
 / Take a bus to Manchester Piccadilly  
 / Change here and catch the 36 bus towards Bolton. Get off at our Peel Park or Frederick Road campuses  
**Journey:**  
**55 minutes**

## MANCHESTER TRAIN

**Route:**  
 / Direct train service from Manchester Piccadilly train station to Salford Crescent  
 / Trains run approx. every half an hour  
**Journey:**  
**10 minutes**

## STOCKPORT TRAIN

**Route:**  
 / Take the train to Manchester Piccadilly train station  
 / Change here to take the train to Salford Crescent  
**Journey:**  
**57 minutes**

Visit [tfgm.com/universities/university-of-salford](https://www.tfgm.com/universities/university-of-salford) to find out more about your public transport and ticket options.

(All transport routes, journey times and travel costs correct at the time of print January 2025. Journey times are approximate and can change depending on traffic conditions).





## PUBLIC TRANSPORT

We are just over a mile away from Manchester city centre; that's just a 20-minute walk or five-minute journey if you hop on one of the many buses which run every few minutes. If you're travelling by train, Salford Crescent is perfectly placed with four trains to Manchester Piccadilly every hour.

If you are travelling to our MediaCity campus, there's a Metrolink stop right outside our MediaCity campus.



## DRIVING OR CYCLING

If you're driving to university we have car parking spaces available across our campuses. You can buy annual and monthly parking permits, or you can simply pay as you go. If you're coming in by bike we have over 400 spaces for bicycles.

Find out more about commuting to Salford at [salford.ac.uk/commuting](http://salford.ac.uk/commuting)



# NOT SO COMMON COMMON ROOMS



On campus we have loads of chill-out spaces and comfortable seating zones for our commuting students.

Our common rooms have everything you need to pass the time between lectures with solo and group study spaces, a lounge area with TV, a kitchen with microwaves and fridges, gender-neutral accessible toilets, lockers, charging points and even a pool table.

As well as our common rooms we also have plenty of other student spaces across campus, whether you want to study, relax or socialise. From individual soundproof pods, to collaborative spaces with digital screens and break out rooms for group work or socialising.



Find out more about the different study spaces on each campus







To hear from our students about life at Salford, follow us on our socials @SalfordUni and listen to our Salford Talks podcast where we speak to recent graduates about life after university.

# STUDENT LIFE

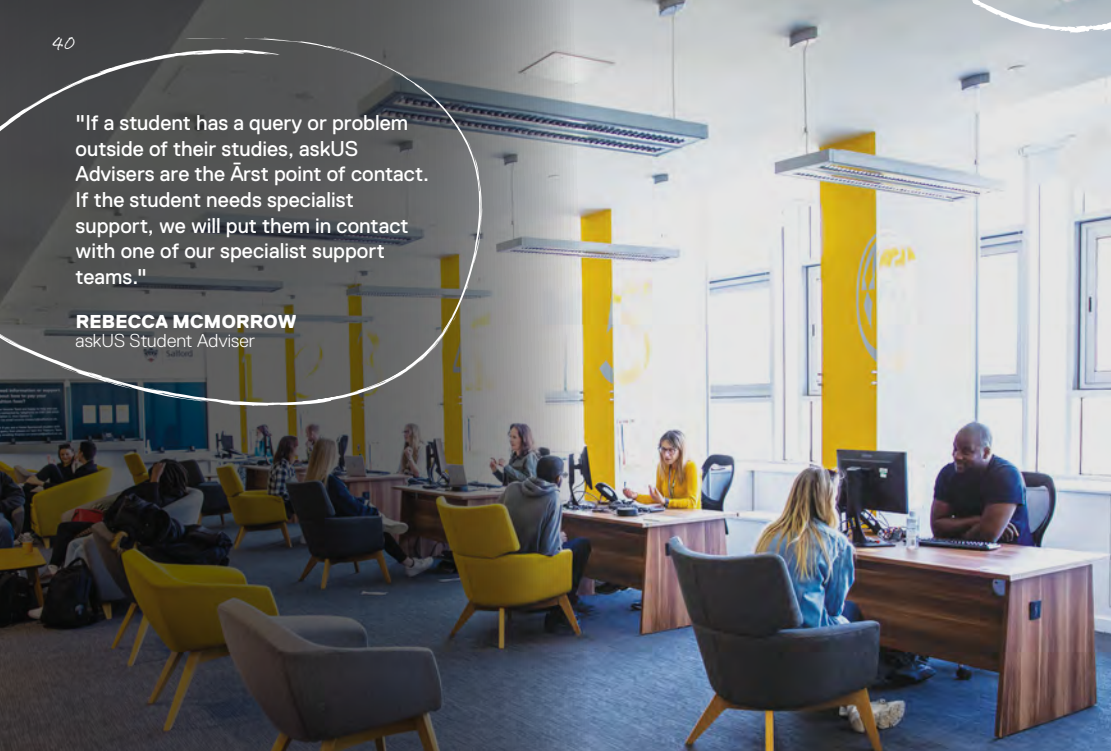
Your university days can be the most exciting time of your life, but they can also be challenging.

Whatever your personal circumstances, we want to make your Salford experience a positive one. Our friendly and experienced support teams are here to provide practical advice and emotional support throughout your time at university.



"If a student has a query or problem outside of their studies, askUS Advisers are the first point of contact. If the student needs specialist support, we will put them in contact with one of our specialist support teams."

**REBECCA MCMORROW**  
askUS Student Adviser



# ANY QUESTIONS, JUST ASK

Our dedicated, specialist support service, askUS, is on hand to offer support and guidance on all things outside of your studies. Whether it's face to face, over email, by phone or through live chat, they can help with a wide range of issues to help make sure you're having the best university experience as possible.

Wellbeing, learning, finance - whatever's on your mind, just askUS!

## DISABILITY INCLUSION SERVICE

Our Disability Inclusion Advisers are here to help support you with any barriers you face when accessing the campus, its facilities, your accommodation or studies. This includes exam arrangements, emergency evacuation plans and field trip support. We assist students with specific learning difficulties, long-term medical conditions, mental health difficulties, physical or sensory impairments, mobility difficulties or temporary injuries.

You may be eligible for additional funding for support with your studies, for example, through the Disabled Students' Allowance. You can speak to one of our advisors to find out what support packages are available.

## COUNSELLING, WELLBEING AND MENTAL HEALTH SUPPORT

If you don't feel comfortable talking about a problem or worry with friends, family or your tutor, it can sometimes be easier to speak to someone you don't know. Our Wellbeing Advisers provide a confidential, non-judgmental space where you feel listened to. They will help explore solutions for any emotional problems you may be experiencing.

We also offer a counselling service that provides talking therapy and can help you on your personal journey to understanding your issues.

## SANCTUARY SEEKERS

As an Article 26 University we believe access to higher education should be based on ability alone. Asylum seekers and students with limited leave to remain cannot access student finance, so we offer a limited number of Article 26 scholarships for these students each year. Additionally, we offer specialist advice and guidance to both sanctuary seekers and refugees who are thinking of how they can access university or choose Salford to study.

## SUPPORT FOR CARERS

One in ten of us has caring responsibilities, so if you're caring for someone whilst studying, we recognise that juggling all of this can be very difficult. Our student advisers and a student care coordinator can meet with you and write a support plan to help you with your time at university.

We can also put you in touch with local and national organisations that provide practical and emotional support.



## ACCESS TO CAMPUS, CURRICULUM, TEACHING

Our Inclusive and Accessible Teaching and Learning Framework reflects our commitment to ensuring our teaching and assessments meet the needs of all of our students. If you experience a disability, medical condition, or specific learning difficulty (for example dyslexia), we strongly recommend that you contact us as early as possible before you start your studies. This way, you can start off your time here well prepared by ensuring that we are aware of your support requirements.

## MONEY

There's lots of support available to help you with your studies including university support schemes, bursaries, and additional government financial support. See page 60 for more information.



"I've always had a passion, all my working life, around equality and inclusion, so seeing that happen at a place like a university is fantastic."

**ARRON PILE**  
Residence and Campus Life Manager



Scan here for more information about our range of support services



## LGBTQ+

Manchester is one of the best queer cities in the UK and at Salford it's on your doorstep. The Salford Trans Forum is a group that meets regularly to provide students with opportunities to continue to make Salford trans and non-binary friendly. We are also a Stonewall Diversity Champion and are working towards being one of the first trans and non-binary friendly universities in the UK. We have staff who can help support your transition at university if you need it. Salford Proud is our LGBTQ+ network for staff and postgraduate students at the University.

You will have opportunities to be involved in events like Manchester and Salford Pride and Trans Days of Visibility and Remembrance. Salford is a great place to be out and proud!



## ARMED FORCES

We understand that Veterans, or students whose parent(s), carer(s), or partner are current or former UK Armed Forces personnel may find there are unique circumstances to consider when thinking about studying at a university. That's why we offer extra support and have a dedicated Armed Forces Lead who can help you on your journey to further study at the University of Salford.

## SUPPORT FOR STUDENTS WITH CHILDREN

Starting a degree whilst looking after young children can be challenging, but there are services available to you at Salford to allow you to achieve your learning goals. Help with childcare costs is available to students.

We also have support for pregnant students and those juggling family and student life.

**"If you want more in depth knowledge about how to annotate, or create bibliographies - we have an academic support team. They'll go through bibliographies, referencing, how to use library search and teach you how to write essays."**

### REIS TOBOLSKI

Content Engagement Assistant,  
Clifford Whitworth Library

## LIBRARY SUPPORT

Based at the centre of Peel Park campus, our Clifford Whitworth Library offers a truly modern learning space with PC suites, Mac computers, bookable work rooms and much more. We also have a purpose-built library at MediaCity.

If you've been out of education for a while, or would just like to refresh your knowledge on topics such as researching, referencing and reading lists, the library offers a variety of resources covering academic skills, IT skills and much more.

Find out more about our library services at [salford.ac.uk/library](https://salford.ac.uk/library)

## SALFORD STUDENTS' UNION

Throughout your time at Salford, we're here to offer impartial and non-judgemental advice and help when you need it. From housing to health and wellbeing, mental health to academic appeals, the SU advice centre can help you seek support with a number of issues. See page 50 for more information.

## FAITH

Salford is a tolerant, diverse community where students of all faiths, religions, beliefs - and none - are welcomed. We are proud of our dedicated Faith Centre on Peel Park campus which offers chaplaincy services, a Chapel, Muslim Prayer Hall, and Kosher kitchen as well as spaces for reflection, discussion, learning, socialising and celebration.

As well as our Faith Centre, we also have other facilities across campus which meet the faith requirements of our University community. These are open between 08:30-21:30, Monday to Friday and exclusively for student and staff use.

At Salford, we believe in providing a supportive environment in which all students and staff of any belief system or religious, philosophical, and cultural background can explore new ideas and experiences. We also play host to regular events and activities for both faith and non-faith groups.



## PARENTS AND SUPPORTERS

We know that applying to university can seem daunting and as parents and supporters, we want to make sure that you have all information you need to support your loved one with the big decisions ahead.

By signing up to our parent and supporter newsletter at [salford.ac.uk/parents](https://salford.ac.uk/parents) we can help you to understand the application process, keep you informed of important deadlines, as well as sending you hints, tips and reminders to support your loved one in applying to university.

## STUDENT PROGRESSION ADMINISTRATORS

Each of the four academic schools at Salford have a dedicated support team of Student Progression Administrators (SPAs), who can help with anything, and everything related to your studies. SPAs can also help with exam results, advice and guidance on academic regulations and any personal mitigating circumstances you may experience.

## INTERNATIONAL STUDENTS

The University of Salford is a truly global institution, with over 4,500 international students from over 85 countries, creating a vibrant and multi-cultural atmosphere on campus.

We have a range of support services available to you as an international student, to help you settle in and make the most of your time at Salford. We can advise on visa issues, working whilst in the UK, help with English and more.

*Scan to learn what life is like in Salford and Manchester as an international student.*



## CARE EXPERIENCED AND ESTRANGED STUDENTS

We know that many of our students do not have the support of their families at university and that this can create barriers to success. We have some of the very best support in place for both care leavers and care experienced students (for example, if you have been in foster care or a residential unit) and for estranged students (students who have little, no, or a negative relationship with both parents).

We work nationally with organisations such as the National Network for the Education of Care Leavers and Stand Alone to support students, whether that be financial help and applying for student loans, accommodation and homelessness, emotional support or working with your local authority or support worker to ensure your success at university.



# LIFE OUTSIDE THE LECTURE THEATRE

Salford and Manchester are cities full of history, culture and places just waiting to be discovered and explored.

## CULTURE AND ART

The Science and Industry Museum is a must-see for engineering students, telling the story of Manchester's pivotal role in the advancement of technology and industry.

Just a ten minute walk from Peel Park campus, Islington Mill is home to radical, subversive music and visual arts, with a mix of events and exhibitions to inspire and surprise you.

Whitworth Art Gallery in Manchester holds an eclectic and ever-changing collection of historic fine art, contemporary and modern art, textiles, prints and sculptures, set in the beautiful Whitworth Park. Whilst Salford Museum and Art Gallery, right on our doorstep, lets you step back in time to 1897 in its re-creation of a typical northern street.

One of the newest additions to Manchester's cultural scene is Aviva Studios, which opened in 2023. Just over a mile away from our Peel Park campus, and home to Factory International, the purpose-built space hosts exhibitions, performances and events from world-renowned artists to up-and-coming local talent.



## SHOPPING

Manchester city centre offers shops to suit every budget, with the best high street and designer names at the Arndale Centre, as well as vintage and alternative markets in A&A ecks Palace and the Northern Quarter. The Trafford Centre is also just a short bus or tram ride away.



## FOOD AND DRINK

Foodies will be spoilt for choice with all types of cuisine on offer at Salford and Manchester's many restaurants, cafés and bars.

Salford's Chapel Street, just a few minutes' walk from our Peel Park campus, is home to a growing number of independent outlets including authentic Italian pizzeria Vero Moderno, homemade Spanish tapas restaurant Porta and the beautiful cakes and artwork of Kith and Kin.

In the Northern Quarter it's all about quirky diners, canteens and cafés – from huge breakfasts or vegan junk food, to American-style burgers and homemade cakes.

Manchester's Chinatown is the second biggest in the UK, with a host of Chinese, Korean and Japanese restaurants, as well as a number of speciality supermarkets. Just outside of the city

centre you'll find Rusholme's famous 'curry mile' offering Indian, South East Asian and Middle Eastern cuisine.

Make sure you also visit Kargo at Salford Quays, the city's new waterfront foodie destination with 20 different independent kitchens, microbrewery, plus a regular programme of pop-up events, live music and more.

Hear from our own students on what they love about the local area, from outdoor swimming and running routes, to the best places for brunch and where you can get your next culture fix.

Scan to read our student blog for the inside scoop.





# MUSIC AND THEATRE

Live music is everywhere in Manchester. See the biggest names at venues such as the AO Arena, Co-op Live or Victoria Warehouse; indie and underground gigs at Night and Day Café, The Deaf Institute and Gorilla; plus annual festivals such as Parklife and Sounds from the Other City.

HOME is more than a cinema; it's Manchester's centre for international contemporary art, theatre and film, complete with a bar and restaurant. Discover your new favourite director and get involved in exciting events and exhibitions. We're proud to be founding partners of HOME, which opens up opportunities for students such as gaining direct industry involvement in the curriculum on relevant courses.

The Lowry Theatre, named after the Salford artist LS Lowry and located at Salford Quays, hosts plays, comedy shows, dance performances, family activities and gallery exhibitions – right on our doorstep next to MediaCity.

Want to enjoy your culture even closer to home while you're here? Our Peel Park campus is home to New Adelphi Theatre, a 350-seat theatre which hosts a range of events, from side-splitting comedy to groundbreaking dance projects and big band entertainment, involving both our own students and external companies.

"Living in Salford and being so close to Manchester city centre means I get to experience so much culture which is fantastic. When I'm in university, I study at MediaCity so I get to go celebrity spotting!"

**RHYS**  
BA (Hons) Journalism (Broadcast)

## SPORT

If you're into sport, you couldn't choose a better city to live and study in. Sportcity houses Manchester City Football Club's Etihad Stadium, as well as the National Squash Centre and Regional Tennis Centre. Here you'll also find the National Cycling Centre, which includes the Manchester Velodrome. Old Trafford, home to the world-famous Manchester United Football Club, is also just two miles from Peel Park campus.

The Manchester Aquatics Centre, purpose built for the 2002 Commonwealth Games, boasts a 50 metre swimming pool, diving pool, gym and health suite.

If going for a run to clear your head and get some fresh air is more your type of sport, there are plenty of local running routes to enjoy. You can take part in local organised runs such as parkrun (and there's one that takes place on our very own Peel Park!) or join the University's own running club to make some new friends.



Scan to get a taster of what the cities have to offer.



Old Trafford



Manchester Aquatics Centre

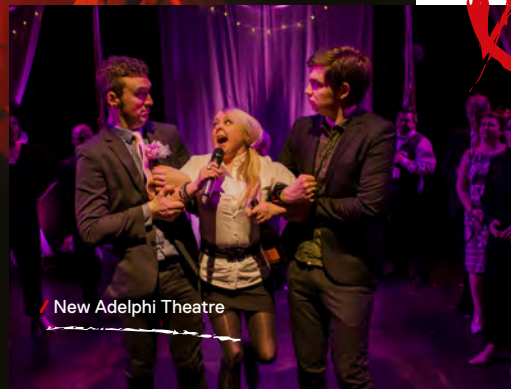
## NIGHTLIFE

At night, Salford and Manchester come to life and you'll discover that the social scene and nightlife here is second to none.

Whether you want sophisticated cocktails in Spinningfields, a fun and fabulous night out on Canal Street, or the chance to practice your putting skills at Junkyard Golf Club, there's so much to see and do when you spend your evenings in one of the cities' many unique social neighbourhoods.



The Deaf Institute, Manchester



New Adelphi Theatre







# Salford SU

We're your SU. We're led by students for students. We're your go to for advice, sports, societies and campaigns. We work closely with students to know exactly what events, activities and issues are important to you. And if that wasn't enough we also offer amazing food and drink at our bar Atmosphere.

Check us out at [salfordsu.com](https://salfordsu.com)

Follow us [@salfordSU](https://twitter.com/salfordSU) to find out what you can expect.

We're run by students, for students, representing you during your time at university - so come and visit us to make sure your time at Salford is truly unforgettable!



## CHANGE AND ENGAGE

**Your voice is vital! There are so many ways you can have an impact at Salford.**

Submit your big ideas and start work on campaigns that matter to you! Your SU can support you in making a difference.

Engage with our School Reps and Course Reps, they're our volunteer students who are here to represent your voice and help with any issues you may run into on your course. You could even apply to become a representative on your course or for your school.

Engage with our Equity Ambassadors to promote equity, diversity and inclusion at Salford. There are so many opportunities to take part in focus groups and attend events, to make change at Salford.

Find out more at [salfordsu.com/changeandengage](https://salfordsu.com/changeandengage)







## ADVICE AND SUPPORT

Being at university can be overwhelming. Your SU get it, we know how demanding it can all be and we can support you.

We offer appointments with our advisers to access academic, housing and finance advice information, and our website features lots of advice on wellbeing and self help guides.

Our peer to peer support service Rafiki is available for all students. Chat to our student staff about any problems you're experiencing at University.

Find out more at [salfordsu.com/advice](https://salfordsu.com/advice)

## EMPLOYABILITY

We know finances at Uni can be a worry so we offer a whole host of different paid roles.

From Peer Listening positions within our Advice team and Student Officers leading the SU, to Content Creator roles in our Communications team. Students are at the heart of everything we do.

We also have loads of volunteering opportunities to add experience and expertise to your CV.



## EVENTS

We work with our student staff to find out exactly what you want and deliver it!

Atmosphere has something for everyone. Regular Bandaoke nights, Bonkers Bingo and our legendary quiz nights.

We've had Afro-Caribbean nights, games night takeovers and Taylor Swift Era's tour (Atmosphere Version.) If students want it - we do it!

We offer free activities all year round. We've got regular taster sport sessions, crafters' afternoons and wellbeing events. Everyone is welcome, and they're a great way to meet new friends and try something new!

A huge day to look out for is our annual Winter Wonderland in December. Fairground rides, games, festive drinks and so much more. Follow [@SalfordSU](https://www.instagram.com/salfordsu) on Instagram for updates on everything going on.





# CLUBS AND SOCIETIES

## TAKE A LOOK AT JUST SOME OF OUR CLUBS AND SOCIETIES...

### GAMING SOCIETY

Our Gaming Society is an environment for people to unwind and enjoy video games, board games and other tabletop role-playing games. We also host a range of external socials including arcade visits, laser-tag, bowling, and ice-skating.

### ARCHERY CLUB

It doesn't matter if you're a seasoned archer or total beginner, you'll fit right in at our Archery Club. Take part in weekly archery sessions, compete with other universities and in our own league as well as attending the yearly 'Archery Tag' social.

## Coming to university can be a great opportunity to meet like-minded people and make friends for life.

Your SU have a huge range of student-led society groups that cover all aspects of life at Salford. We have societies for passions such as sports, gaming or comedy, as well as faith, politics and course based groups. Groups meet up regularly, campaign together and create events.

If you can't see something you're after, why not start a new society!

If you've got a passion or an interest for something chances are someone else will, and it'll be a great way to meet like-minded people. The SU has a team to help you get started and help you out every step of the way.

Check out what's on offer



### AFROCARIBBEAN SOCIETY

ACS, Salford's African and Caribbean Society, allows students from the University and other universities in Manchester to come together and explore the rich heritage of African and Caribbean nations through a variety of events. All races and ethnicities are welcome, so whether you're of African Caribbean descent or have a love for African-Caribbean culture, you're more than welcome to join.

### MATURE STUDENTS SOCIETY

Our Mature Students Society connects all mature students at Salford, whatever your calendar age! With regular local meetups, some more active adventures further afield, plus a private WhatsApp group, it's an opportunity to get to know like-minded people at the University.

### DJ SOCIETY

A group for all those passionate about music, whether you have some experience or are a complete novice. Weekly open jam nights give you the chance to socialise and practice your skills with all the equipment provided.

### LGBTQ+ SOCIETY

A group for all LGBTQ+ students at the University. Weekly meet-ups, events and outings give students the chance to meet new people and feel included, as well as offering wellbeing support for members.





# TEAM SALFORD

Team Salford unites all sports teams at the University, with the aim of making exercise accessible and fun for everyone. You can't think about Salford and Manchester without thinking about sport, it's in our blood. So whether you're a regular gym-goer or you've never even taken the tags off our trainers, we can help you. And a sport or activity that suits you – you could even start your own club.

## SPORTS CENTRE

Our facilities include a 25 metre swimming pool with spa and sauna, five fitness suites - including strength, cardio and conditioning rooms, all containing the latest gym equipment supplied by our partners Matrix Fitness UK - and a multi-use sports hall for badminton, basketball, netball and five-a-side-football. Next to the Sports Centre we have two 11-a-side football pitches and a brand-new 3G pitch that can be used for a range of activities such as football, rugby league and union, ultimate frisbee, softball and much more.

We offer a range of fitness classes in our state-of-the-art Studio Room, including Boxfit, Zumba, yoga, pilates, studio cycling and HIIT Bounce. We look to regularly refresh our timetable



to bring you a variety of enjoyable classes at convenient times. Located on Peel Park campus, the Sports Centre is the perfect place to keep fit and healthy, relax and make friends, right on your doorstep.

Our Sport Rehabilitation students offer free sports massages and injury treatment on Monday and Tuesday evenings and Wednesday afternoons for Sports Centre members and sports team members during term times (this service is subject to availability). This is a unique student-led service offering additional value to our membership.

Our Sports Centre membership is £15\* per month which gives students full access to our facilities, including the pool, sauna and spa, fitness suites and fitness classes.

**Scan to see our Sports Centre facilities.**

\*Price correct at time of production (January 2025)





# APPLYING, FILES AND FINANCE





# HOW TO APPLY

To make your application to Salford smooth and stress-free, follow this step-by-step guide and make a note of the important dates and deadlines.

## STEP 1

Think about what you really want to know - not just about your course, but where you'll live, the experiences you'll gain, the people you'll meet. Attend UCAS fairs, go to careers events held in your school or college, talk to your teachers and careers advisor too.



## STEP 2

Book on to one of our **Open Days on 14 June, 4 October, 8 November and 13 December 2025** by going to [salford.ac.uk/undergraduate/open-days](https://salford.ac.uk/undergraduate/open-days)

Open Days are your opportunity to meet current students and teaching staff and get a feel for where you'll study. Before the event, make a note of all your burning questions to ask our staff and students.



## STEP 3

When you've made up your mind about which course you want to take, apply online through **UCAS before their January 2026 deadline\*** to guarantee consideration. You can still apply after this date but we can't guarantee your application will be considered as some courses may close.

## STEP 4

Once your application has been received, it will be considered and we might ask you to come and meet us for an interview or audition, or submit a portfolio, depending on your course. After this, we'll make a decision and let you know the outcome via your UCAS Hub.



## STEP 5

After applying, you should start thinking about how you'll fund your studies - usually through a student loan. For more details visit [gov.uk/student-finance](https://gov.uk/student-finance)

## STEP 6

If you are made a conditional or unconditional offer, we'll invite you to an Offer Holder Day, which will take place between **February and May 2026**.



## STEP 7

Once you've received an offer, you should start to think about accommodation. Find out more about all the options available at [salford.ac.uk/accommodation](https://salford.ac.uk/accommodation)

## STEP 8

In order to guarantee your student finance is in place before you start in September, you should apply for your loan by the **end of May 2026**. You can check deadlines and apply at



## STEP 9

If you applied by the January deadline you'll need to choose a term choice and an insurance choice by **early June 2026\***



## STEP 10

Depending on what you're currently studying, **you should receive your results in July or August**. If you've met the conditions for your course at Salford, we'll let you know via your UCAS Hub that your place is confirmed. If your results were different to those you expected, there may be options open to you through Clearing.

## WELCOME

You'll be invited to our Welcome Week in September 2026, during which you can complete your registration, meet new friends, explore the campus and city - and most importantly, have fun!

\*Please check the [ucas.com](https://ucas.com) website for exact dates.



# FEES AND FINANCE

Our fees for students from the UK, Channel Islands and Isle of Man studying a full-time undergraduate degree are **£9,535\*** per year for the **1st year of study**.

Fees for UK part-time students will vary depending on the number of credits taken per year, and the fees for our DipHE or Top-up courses and the foundation year of a full degree may differ. Please see the relevant course page for details. All UK students are eligible to apply for a loan to cover the full amount of their tuition fees.

Tuition fee loans are paid directly to the University each term and you don't need to pay anything upfront. If you're studying full-time, you'll receive a maximum of £9,535 per year, depending on the course and if you're a part-time student, you'll receive a maximum of £7,145\*.

\*This figure was correct at the time of production (January 2025). Your tuition fees may increase in your first and each subsequent year of your programme to the maximum amount permitted by UK law or regulation for that academic year. For the most up to date information on our fees, please check the relevant course page on our website.

A maintenance loan for living costs is also available to support undergraduate students from the UK. The maximum amount that you may receive depends on a number of things, including where you are from in the UK, your household income, your course, where you will live while you are studying and your individual circumstances. To calculate how much you might be entitled to take a look at [gov.uk/student-finance-calculator](https://gov.uk/student-finance-calculator). Loans for living costs are paid directly into your bank account each term.

There's also other additional government support available to help with your studies including Disabled Students Allowance, Adult Learning Allowance, and the NHS Learning Support Fund. For more details on student finance and support schemes, visit

More information is also available on the government website at [gov.uk/student-finance](https://gov.uk/student-finance)

## ADDITIONAL FINANCIAL SUPPORT

Our Inspire scheme is open to all new students joining a foundation year or year one of an undergraduate degree based at the University. You'll receive £150 of credit to spend in a dedicated online store where you can buy learning resources such as text books, electronics or stationery, to give you the best possible start to your studies here at Salford. The scheme runs annually, meaning you'll receive £150 of credits each year of your undergraduate degree if based here on campus.

For students from low-income backgrounds and living in areas where participation in higher education is low, there will also be the opportunity to receive an additional £350 of credits each year. This will be based on personal circumstances and

will be assessed when you register at the start of your degree.

We also offer a range of bursaries and scholarships to eligible students, depending on your circumstances.

For eligible students studying some of our healthcare courses, additional funding and support may be available from the NHS Learning Support Fund. Find out more at [nhsbsa.nhs.uk/nhs-bursary](https://nhsbsa.nhs.uk/nhs-bursary)

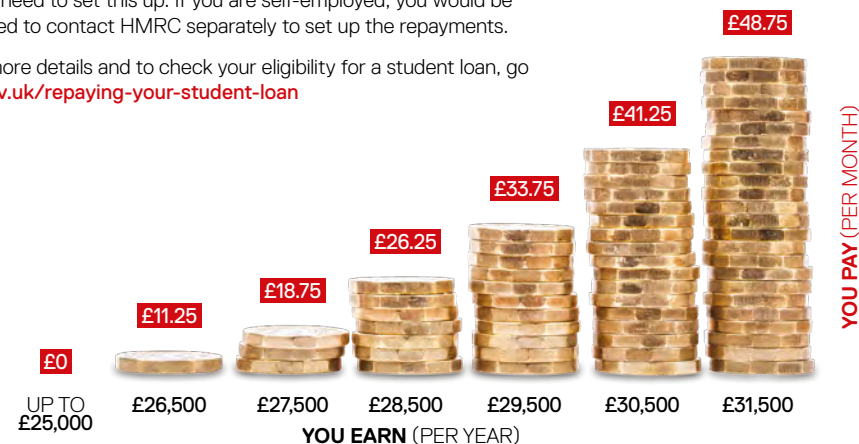
To find out more about all additional funding opportunities, visit [salford.ac.uk/undergraduate/fees-and-funding](https://salford.ac.uk/undergraduate/fees-and-funding)

The **£9,535-a-year** price tag attached to your degree might sound like a scary sum, but did you know that after graduating, you won't have to pay back a single penny of your tuition fee or maintenance loans until you're earning over **£25,000\*\*** per year.

\*\*Correct at time of printing (January 2025). The repayment threshold for residents of Northern Ireland and Scotland will differ. The repayment threshold is set by the government and the amounts are reviewed annually.

After that, your loans are repaid at a rate of 9% of your income over the threshold. So, if your salary is £27,500, you'll pay back 9% of £2,500, which works out at less than £20 per month. Repayments start the April after you graduate (provided you are earning over the threshold), and are taken automatically, so you don't need to set this up. If you are self-employed, you would be advised to contact HMRC separately to set up the repayments.

For more details and to check your eligibility for a student loan, go to [gov.uk/repaying-your-student-loan](https://gov.uk/repaying-your-student-loan)





# COST OF LIVING IN SALFORD

To help you understand how much you will need to budget, we've provided a few examples below of everyday costs.

## ACCOMMODATION

On-campus accommodation (run by Campus Living Villages) ranges from £162.00\* per week, depending on site and room size.

## UTILITIES AND OTHER OUTGOINGS

If you are not living in campus accommodation, you might also need to take into account the cost of bills for water, electricity, gas and internet.

## FOOD AND GROCERIES

There are a range of supermarkets to suit every budget, as well as farmers markets and independent shops. Preparing fresh meals at home rather than buying pre-prepared or takeaway food will save you money. Don't forget to budget for cleaning products and toiletries as well.



\*All costs correct at time of production (January 2025)



## HEALTH AND FITNESS

Our gym membership costs from £15\* per month, depending on the facilities you choose to use. University sports teams will charge weekly membership fees, plus the cost of your kit.

## LEISURE

A standard cinema ticket costs from £8-£13\*, and theatre tickets between £15 - £75\*. An evening meal at a restaurant with friends typically costs around £20-25\* each, plus the cost of any drinks. There are many free events, galleries and museums in Salford and Manchester to keep you entertained on a budget, and as a student, you are entitled to discounts in many shops and restaurants.

## TRANSPORT

A single bus ticket costs £2\*, and a weekly student bus ticket costs £18.20\*. A single ticket on the tram costs from £1.40\* and a weekly tram ticket starts from £10.60\* depending on your destination. Manchester and the surrounding areas are also served by a number of convenient and attractive cycle routes.

## BOOKS AND STATIONERY

New textbooks for your course can be expensive, so make sure you use the library as much as possible, or buy books second-hand to save money. The Student Store on campus sells affordable stationery.



There are lots of tips for making your money go further, plus budgeting advice at [salford.ac.uk/money](http://salford.ac.uk/money)



## STUDENT DISCOUNT

Students are eligible to buy a TOTUM card which gives you access to exclusive student deals on food and fashion, tech and travel, and everything in between.

You can also get your hands on discounts for well-known brands by registering with student websites such as [studentbeans.com](http://studentbeans.com) and [myunidays.com](http://myunidays.com)



# YOUR FUTURE IS AT THE HEART OF EVERYTHING WE DO

A degree from the University of Salford is more than just a certificate – we'll help you graduate with confidence, ready to step into your chosen career.



We partner with businesses and organisations from all sectors, working hand-in-hand to develop courses that equip you with up-to-date skills that are relevant to current and future challenges.

Our academic staff are professionals in their fields, with many actively engaging with industry to continuously update their knowledge and inform their teaching.

From internships to employment opportunities, guest speakers to practical, hands-on workshops and lectures; we provide our students with the skills necessary to succeed both academically and in working life beyond graduation.

## EMPLOYABILITY SERVICES

**You can access our professional, on-campus and online careers services even after you graduate.**

We can help you to hone your job application skills, create LinkedIn pages and offer personalised career advice to help develop your employability skills. Find out more at [salford.ac.uk/employability-skills](https://salford.ac.uk/employability-skills)

We offer online resources to help with your CV and interview techniques through 'Careerset' and 'Shortlist Me', and provide opportunities for students to engage with employers through on-campus careers fairs, drop-ins and networking events.

Find out more at [salford.ac.uk/careers](https://salford.ac.uk/careers)

We also have an on-site recruitment agency 'Unitemps', which can help you access part-time and temporary work working for the University and local employers. For more information visit [salford.ac.uk/unitemps](https://salford.ac.uk/unitemps)

"My job is to work very closely with our academic staff to help build employability and career support into the curriculum. So that as students are going through their courses, they're also learning about how the skills and knowledge they're building, is going to help them take their next steps after university."

**NAT WALSH**  
Careers Consultant



"In the second year, we did a module that focused on developing yourself and your employability skills. We were assessed on CV and cover letter writing, psychometric tests, and creating a LinkedIn profile. CV writing was a weak area for me, so it was nice to have some experience and support to create a robust one."

**LEWIS**  
BSc Business Management  
with Finance

"Students really do have nothing to lose and everything to gain by doing a placement – we often see a marked increase in their confidence when they return to complete their final year studies. It might be out of your comfort zone, but it really does help students to gain the skills and professional behaviours that are needed when entering the employment market, as well as allowing students to apply classroom learning to a real world setting."

**SANDRA DONNELLY**  
Lecturer in Business Sustainability and  
Ethics at Salford Business School



"The wide array of networking events offered by the University has boosted my employability skills as they have enabled me to meet a variety of different solicitors and even secure some work experience with the General Medical Council."

**AAMENAH**  
LLB (Hons) Law with Criminology





# WORK EXPERIENCE

We use our partnerships and staff networks to create opportunities for you to gain real, hands-on experience that will help you to develop the professional and personal skills that employers value.

The majority of our courses have options to develop skills and experiences with an employer, such as live projects and work placements.

Many courses can also include a year in industry, providing an opportunity to develop valuable skills and experiences working for an employer on a full-time basis, without paying any tuition fees for the year.

## START YOUR OWN BUSINESS

At the University of Salford, no ambition is too big. If you've got a business idea of your own or you're interested in working on a freelance or consultancy basis, we can offer advice and support to explore and prepare for self-employment career routes. From funding opportunities to start-up toolkits, our employability teams can help bring your idea to life. Visit [salford.ac.uk/careers/work-for-yourself](https://salford.ac.uk/careers/work-for-yourself) for more information on self-employment advice and support, and our 'Launch' business incubation support.

## INTERNATIONAL OPPORTUNITIES

We have partner institutions all over the world including many in Europe and also in Australia, Canada, Hong Kong, South Korea, and the USA. These are incredible opportunities to visit some fantastic places, while developing your longer-term career prospects.

We offer international study exchanges, which can be for one trimester or a full academic year, and for courses which have work placements included, offer the opportunity for these to be completed overseas. Both options will depend on your course and funding, where applicable, can be provided through the Turing Scheme.

For more information on our international opportunities visit [salford.ac.uk/international-opportunities](https://salford.ac.uk/international-opportunities)

"Wincanton really value some of the things I'm interested in, like sustainability," says Oliver. "I've had the opportunity to be involved with electrical vehicle trials, organising the transportation of lorries, analysing data and presenting the results back to customers. I've also helped Wincanton to deliver their one year plan to make the business more sustainable."

"I'd recommend taking part in a placement year. You have to be strong-willed, thick-skinned and ready to learn, but you learn skills and resilience through your placement. I'd say have the confidence to be proactive about your work: your placement really is what you make of it!"

### OLIVER

BSc (Hons) International Business Management with Work Placement



"Collaborating with students from the Business Management with Sport course from the University of Salford at Manchester United has been an incredibly rewarding experience. The students have demonstrated a genuine enthusiasm for event management, embracing a variety of responsibilities with professionalism and energy. From pitch setup and welcoming stakeholders, such as Year 4 students and their teachers, to communicating tournament rules with match officials, assisting medics during first aid incidents, liaising with scouts on potential talent, and using the Tournify app to organise schedules, they have shown great capability and commitment.

I've seen their confidence and proactivity flourish as they've developed strong interpersonal skills, particularly in building meaningful connections with the children involved. The practical experience they're gaining - teamwork, communication, problem-solving, and adaptability - will undoubtedly serve them well as they transition into the industry. It's a great pleasure to mentor the students and watch them thrive in this environment."

### SOPHIE HUNT

The Grassroots Engagement team, Emerging Talent Programme at Manchester United





# OUR COURSES

We offer a variety of courses to suit your individual needs, including; traditional three-year degrees, four-year degrees with year placements, degree apprenticeships, foundation years and part-time study.

In this section you'll find out more about our entry requirements and the different study options we offer.

A full list of all of our courses can be found on our website.

Scan here for more information  
[salford.ac.uk/search/courses/undergraduate](https://salford.ac.uk/search/courses/undergraduate)



If you're not quite sure what you want to study yet, scan here to explore the subject areas we offer





# ENTRY REQUIREMENTS

Courses have individual entry requirements and some require specific subjects. Visit the full course information on our website to find out if this applies to the course you're interested in. Our minimum entry requirement for a degree course is two A levels or equivalent, but some courses will require three A levels.

If your chosen course is in science or engineering, please check our website to see whether A levels in physics, chemistry and biology, where science practical assessments are taken, are a requirement for entry.

Most courses also require a minimum of grade 4 in GCSE English and maths, (or grade C for qualifications taken prior to 2017), or a grade C in both subjects where GCSEs are taken in Northern Ireland or Wales, however some may require a grade 5.

We operate a flexible admissions policy and treat everyone as an individual. This means that we will take into consideration your educational achievements and predicted grades (where applicable) together with your application as a whole, including work experience and potential to succeed in your chosen course.

International students will need to show a good level of English (usually a minimum of IELTS at 6.0 or above, with a minimum score of 5.5 in each component). This can vary depending on the course though, so please check the course information on our website for details.

## UCAS TARIFF POINTS

You can find out the number of UCAS points you'll need by checking the list of courses at the back of this prospectus, though there will be additional grade and subject requirements for some courses. Visit the relevant course page on our website to check if this applies to your course and to make sure you're viewing the most up to date information.

To find out more about UCAS Tariff Points and how they work, visit [ucas.com](https://ucas.com)

## WE VALUE EXPERIENCE

Not everybody takes the same path in life, but that shouldn't stop you from realising your potential. If you haven't taken the traditional route through the education system but think you've got the experience and drive to pursue a degree, we want to hear from you. The Salford Alternative Entry Scheme offers the Accreditation of Prior Experiential Learning (APEL).

Find out more at [salford.ac.uk/salford-alternative-entry-scheme](https://salford.ac.uk/salford-alternative-entry-scheme)

## INTERNATIONAL ENTRY REQUIREMENTS

If you have international qualifications, check our website for details of what we accept and their equivalences. Visit [salford.ac.uk/international/your-country](https://salford.ac.uk/international/your-country)



If you're a UK applicant leaving school or college, we accept the following qualifications:

- / A/AS Levels
- / T Levels
- / BTEC Award
- / Welsh Baccalaureate
- / Access to Higher Education Diploma



- / Scottish Higher/Advanced Higher
- / Irish Leaving Certificate (Higher)
- / The International Baccalaureate
- / Cambridge Pre-U
- / UAL Diplomas in Art and Design
- / Rock School Music Practitioners qualifications

This list is not exhaustive, we accept a wide variety of qualifications and look at applications on an individual basis.

# OTHER STUDY OPTIONS

As well as three-year degrees, we also offer a wide range of other study options, including foundation years, technical qualifications and apprenticeships.

## FOUNDATION YEARS

Our foundation year courses are ideal if you've got the ambition to study, or want to develop your career, but don't meet the entry requirements for direct entry on to an honours degree, or don't have the appropriate background knowledge.

Our range of courses can help to equip you with the knowledge and skills you need to progress onto one of our undergraduate degrees. They'll introduce you to key concepts and ideas, and provide you with a basic understanding of approaches, concepts, theories and principles as well as developing your study skills.

They are also suited to you if you are returning to education or if you wish to change career direction. You can see which of our degrees offer a foundation year in the course listings at the back of this booklet.

You can also look at our course listings online for the latest information at [salford.ac.uk](http://salford.ac.uk)



## HIGHER TECHNICAL SKILLS

Our Higher Technical Skills courses are designed to give you hands-on, vocational training, fast. These qualifications provide a concentrated experience over one or two years, so you're prepared for immediate employment upon finishing your studies and can hit the ground running.

By choosing one of these programmes, you are preparing for your future. The courses are skills-based and practical, and you will be supported throughout your studies.

On a Salford Higher Technical Skills course, you will learn by doing – making sure that you develop the job-ready skills needed to succeed. The course will teach you the technical elements of your chosen field and provide you with the skills required to satisfy industry and employer needs.

Developed in collaboration with employers, our higher technical skills courses and apprenticeships are designed to give you the right training, knowledge, and skills to succeed in the workplace.

## WHAT SORT OF QUALIFICATIONS CAN I DO?

We offer a range of Level 4 and 5 programmes, typically equivalent to the first and second years of a standard degree, and are for both school leavers and those wanting to upskill or those returning to study in later life. There might also be the opportunity to top up your study to a Level 6 degree BA (Hons) or BSc (Hons) qualification.

For more information on the courses we've launched in our creative media, business, health, science and engineering subject areas visit [salford.ac.uk/learnbydoing](http://salford.ac.uk/learnbydoing)

For more details on the study options available for the subject you're interested in, visit the course pages on our website at [salford.ac.uk](http://salford.ac.uk)

## APPRENTICESHIPS

If you're looking to gain a qualification along with experience in your chosen career path, then an apprenticeship could be the perfect route for you.

An apprenticeship allows you to study whilst gaining practical, on-the-job skills. This work-based route means you will apply theory and knowledge from the classroom directly to your place of work on an ongoing basis. You'll learn alongside industry experts and gain vital experience to help you excel in your chosen career.

As an apprentice, you will study part-time at the University and spend the rest of your time in the workplace. Apprenticeships aren't like other undergraduate degree programmes, they're funded by the government and your employer so there are no tuition fees to worry about and you will continue to earn a salary as you study. We currently cover a wide range of disciplines, from nursing, policing, biomedical science and physiotherapy to construction and engineering, and our offer will continue to grow as the government approves new apprenticeship programmes.

To apply for an apprenticeship, you must first be employed with a company willing to enrol you on an apprenticeship programme. If you are in employment, speak with the apprentice lead in your organisation and ask them to get in touch with the Apprenticeship Services Unit who will get your application started and support you all the way from pre-enrolment to graduation.

Not currently in employment? We work with a wide range of employers including Peninsula, Manchester City Council, the NHS, Manchester Airport Group, Network Rail, the NHS, Morgan Sindall, Seddon Construction and Wilmott Dixon. Unfortunately, the University does not hold details of employer vacancies, however you can search for current vacancies on the Government's national apprenticeship website, as well as UCAS, job sites like Indeed or through employers' websites directly.

Find out more about our current courses, entry requirements and application deadlines at [salford.ac.uk/apprenticeships](http://salford.ac.uk/apprenticeships) or contact us on [apprenticeships@salford.ac.uk](mailto:apprenticeships@salford.ac.uk)



# WHY CHOOSE Salford?

There are many reasons why our university could be the place for you, including our unbeatable links to industry, state-of-the-art facilities, and award-winning academics.

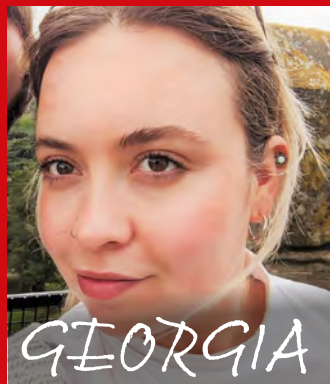
But the thing we love most about Salford is the community that our staff and students have built together, to make our campus a warm and welcoming place to live and study.

Find out more reasons why our students chose Salford at [vimeo.com/680092444](https://vimeo.com/680092444)

"One of the main reasons I chose to study Counselling and Psychotherapy at the University of Salford is because of the opportunity to gain hands on experience through placements alongside my studies. The facilities available for my course and throughout the campus are great too."

**LAUREN**

BSc (Hons) Counselling and Psychotherapy



GEORGIA

BSc (Hons) Wildlife Conservation with Zoo Biology with Placement Year

I came to both the Open Day and Offer Holder Day, and everyone I spoke to was so kind. I really liked how the campus was all in one place and how there was so much variety of knowledge from the lecturers who would be teaching my degree.

I am really happy that I chose this university. Even for someone as socially awkward as myself, I found some of the best people I have ever met here and there are numerous lecturers I feel safe talking to about personal and degree-related issues; they don't judge and are open-minded and understanding.

YEWANDE

MSc Digital Marketing

I chose Salford because of its diverse campus, and strong focus on practical learning. I also loved that it's so close to Manchester, giving me access to the city while still enjoying a supportive and friendly campus environment.



TIA

BA (Hons) TV and Radio Production

I'm doing a Television and Radio Production Degree, so Salford was the perfect place for me to study as the media courses are all based in MediaCity, which is the hub of BBC and ITV. Studying in a place where everything happens just makes it so much more exciting and definitely gives you that extra motivation.

I also love how the university is close enough to experience the hustle and bustle of lively Manchester but also further out enough to enjoy nature and some peace and quiet. A walk in Peel Park or Salford Quays is always a great way to spend my morning and clear my mind, so the University has the best of both worlds.



Hear more from our students on why they chose to study at Salford

## TAKE A VIRTUAL TOUR

Choosing to study at university is a big decision, but choosing the right university is even bigger. We want to help make that choice easier and ensure that you have all the information you need when it comes to making a decision about your future.

The best way to get the full Salford experience is to come to an Open Day (check out the dates on the back cover), but in the meantime, why not take a virtual tour of our campus? Scan the QR code below and take a look around from the comfort of your own home! You'll be about to immerse yourself in our facilities, accommodation, study spaces and more.



Get a feel for life at Salford



# INFORMATION YOU SHOULD BE AWARE OF WHEN APPLYING TO STUDY WITH US

We provide information about our courses, facilities and fees in this guide as far in advance as possible to give you an idea of what is available and plenty of time to consider your options. However, this inevitably means there will be changes to the information between the date this guide is produced (January 2025) and the date we make you an offer and we reserve the right to update or add to any information in this guide at any time.

Before deciding whether to apply for a course, make sure you visit our website [salford.ac.uk](https://salford.ac.uk) as this is the definitive, up-to-date and detailed source of information about our courses and fees. In the event of any inconsistencies between information in this guide and on the website, information held on the website will prevail. Alternatively, contact our course enquiries team at **+44 (0)161 295 4545** or [enquiries@salford.ac.uk](mailto:enquiries@salford.ac.uk) to request this information.

Changes to our courses and facilities for the wellbeing of our students, staff and the wider community may be required and we will adhere to any national, regional or local restrictions should they arise.

We also reserve the right to change the information about our courses and facilities in this guide at any time. Reasons for such changes include, for example:

- ✓ Our need to withdraw or change a course or module because we have insufficient student numbers or funding to run it viably or to give the appropriate educational experience.
- ✓ We have to respond to unforeseen circumstances outside our control (such as requirements of any governmental, regulatory or professional bodies or the introduction of any new or modified laws or regulations).
- ✓ We think the changes are desirable to improve or maintain quality or will enhance the student experience or be otherwise beneficial to students.

We aim to give students and applicants who have accepted offers as much notice as possible of any withdrawals of, or significant changes to, courses or modules or our facilities and to take all

reasonable steps to minimise any disruption.

We make every effort to ensure that all changes we make to courses and facilities are detailed on our website as soon as is reasonably practical.

If your application for a particular course is successful, we will send you an offer letter which, depending on your circumstances, may require you to fulfil certain conditions before you join us.

If you accept the offer in our offer letter, you will have a legally binding contract with us on the date you accept – even if you still have outstanding conditions to fulfil at the date you accept. However, the contract will be automatically cancelled if you do not meet all of the conditions on which the offer is made.

Our offer letter will set out (or provide links to) everything you need to know about the terms and conditions of the contract (including fees and payment) and all of our academic and other regulations, rules and procedures which apply to students.

Some courses may have additional fees associated with them, for example for specific materials or field trips. We won't know the exact amount of these additional fees until closer to the time that they are required. Where appropriate, we have therefore provided an indication of the additional fees required based on costs available at the time of going to print (January 2025). Please keep checking our website for the most up-to-date and detailed information at [salford.ac.uk](https://salford.ac.uk)

For more details on our information policies, including course changes, offer letters, privacy policy and equality and diversity policy, visit [salford.ac.uk/undergraduate/important-information](https://salford.ac.uk/undergraduate/important-information)

## FOLLOW US ON OUR SOCIALS

We have three regular student content creators who share what their life as a Salford student looks like, their favourite spots around campus and the best things to do around Salford and beyond- helping you make that big decision about where to study.

 @SalfordUni

 salforduni

 /salforduni

 Search Salford University



To keep up to date with everything going on at Salford including hidden gems on campus, courses you may never have heard of, and all the latest events going on in the city, make sure you are following us on our socials. When I was researching the university, I found out so much about student life here from the social media pages and now as a Student Content Creator myself, I get to pass down all the tips and tricks I've learnt along the way!

**MAX**  
BA (Hons) English Multidiscipline



[salford.ac.uk](https://salford.ac.uk)

 [@SalfordUni](https://www.instagram.com/SalfordUni)

 [salforduni](https://www.tiktok.com/salforduni)

 [/salforduni](https://www.facebook.com/salforduni)

 [Search Salford  
University](https://www.youtube.com/SalfordUniversity)

Course Enquiries Service  
T: +44 (0)161 295 4545  
E: [enquiries@salford.ac.uk](mailto:enquiries@salford.ac.uk)