



University of  
**Salford**  
MANCHESTER

# PORTFOLIO SUBMISSION GUIDANCE

Laury Anderson - Painting



# PORTFOLIO SUBMISSION GUIDANCE

## for Candidates to the BSc (Hons) Architecture Programme

The submission of a portfolio is part of the Architecture Programme's entry requirements and will form a representation of ALL the GOOD work that you have developed throughout your studies (A levels, BTech or any art/design related subject you have studied or are interested in) or professional career.

The portfolio is to be submitted to us via email (in PDF format) to [AdmissionsSEE-UG@salford.ac.uk](mailto:AdmissionsSEE-UG@salford.ac.uk)  
Please don't send original work by post.

We recommend using an A3 format and a range between five to ten pages. Make sure the file is no bigger than 5MB. The portfolio does not need to be architectural in any way and may include drawing, painting, sculpture, photography, graphics, product design or any other work in visual design. What we like to see is an interest or affinity with architecture in the portfolio.

Please make sure that the images in your portfolio submission are of sufficiently high quality to do justice to your work and that your name is identified on each page.

Letters of verification confirming that the portfolio is the applicant's own work should accompany the portfolio. The letter should be on the School/ College headed paper and signed by a tutor. In the case of mature students, the letter should be written and signed by someone with connections to the industry e.g. an architect.

It is important that you think carefully about how you will show your work. The portfolio MUST be presented in a neat and organized manner. Don't forget this is your work and your portfolio should speak for itself.

## WHAT IS A PORTFOLIO

A portfolio represents the final version of any art and design work that you have done. Each candidate's portfolio becomes a reflective document, which describes not only the projects it contains, but also the thought process that has contributed to each project. Each student is therefore personally represented in his or her portfolio. In most design-related disciplines a CV will need to include some examples of work from your portfolio and a job interview will involve presenting your portfolio. The editing and presentation skills that are required to produce a portfolio are valuable transferable skills for any professional setting.

The portfolio we ask you to submit will give us understanding of not only your representational and creative skills, but also your critical thinking.

This document should therefore contain your work showing how it demonstrates both your creative skills and the way you look at the world around you.

As you are not present to explain your work it is important that your work is laid out in an organised manner so that it speaks for itself.

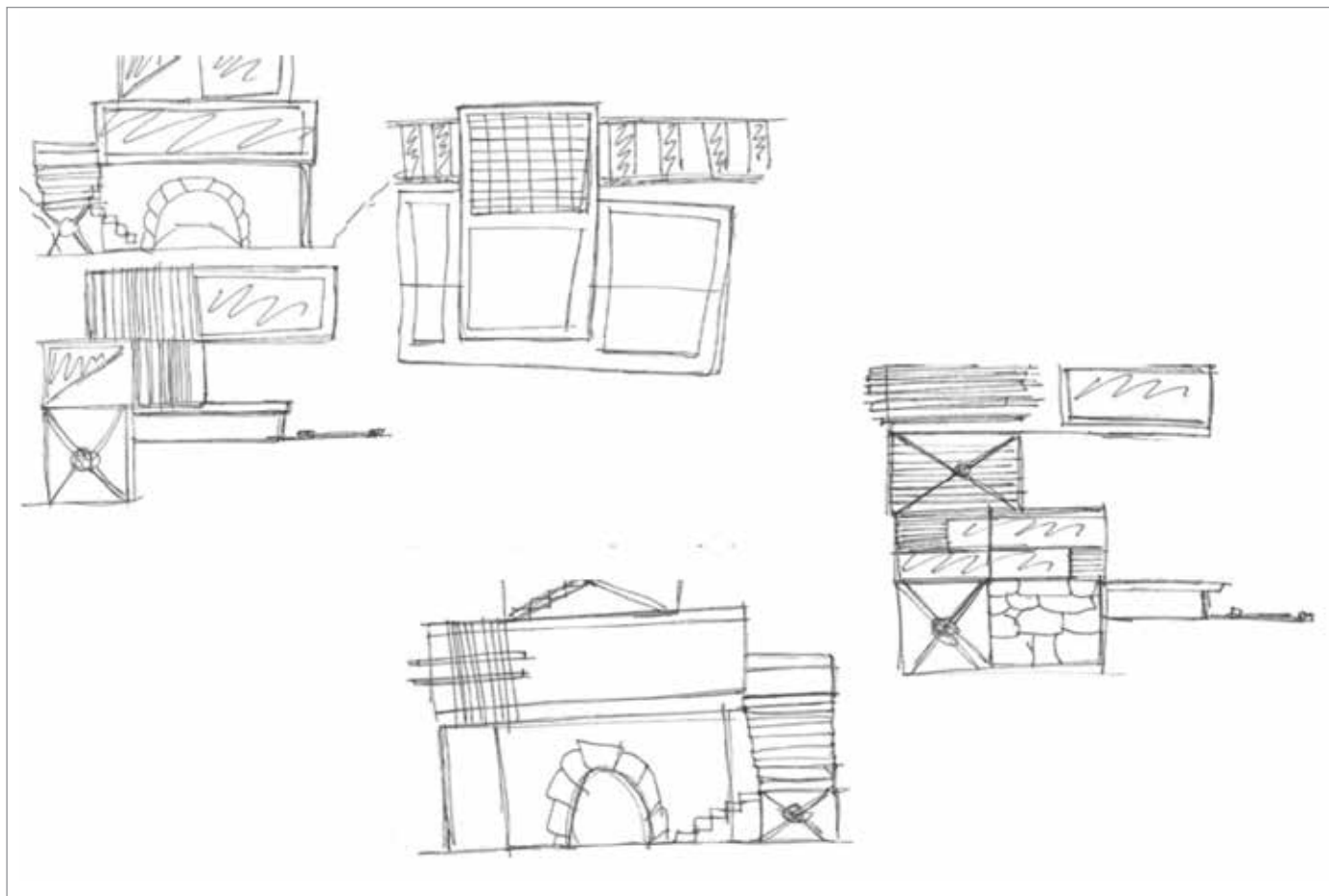
## PUTTING TOGETHER YOUR PORTFOLIO

We now ask that your portfolio is submitted electronically (in PDF format) and for that there are certain guidelines that apply. Your work should be easy to look through and it should be clear what each piece is – remember that you are not, in general, there to explain individual items to the people looking at your portfolio. Text, neat labels, or a sheet of contents, for example, can help to explain what you have produced. Give a value to what you do and make sure that you present it in a way that does the work justice – this might mean that you produce a 'cover' page or carefully consider the layout of images submitted.

Make sure that a VERY SHORT description of the task given is included in order to assist the person looking at your portfolio to understand the task you were given and how you have developed it.

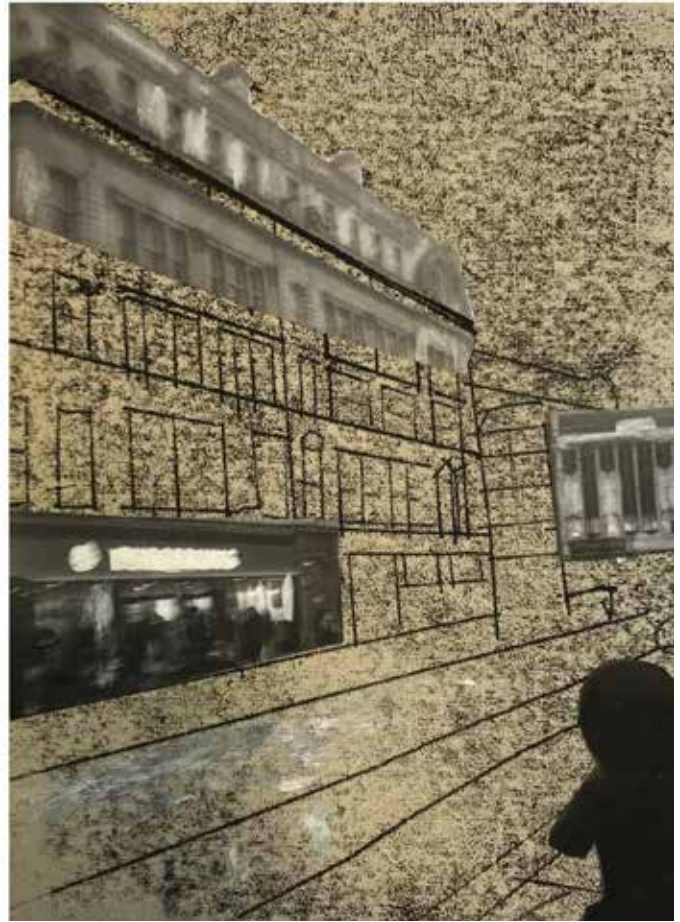
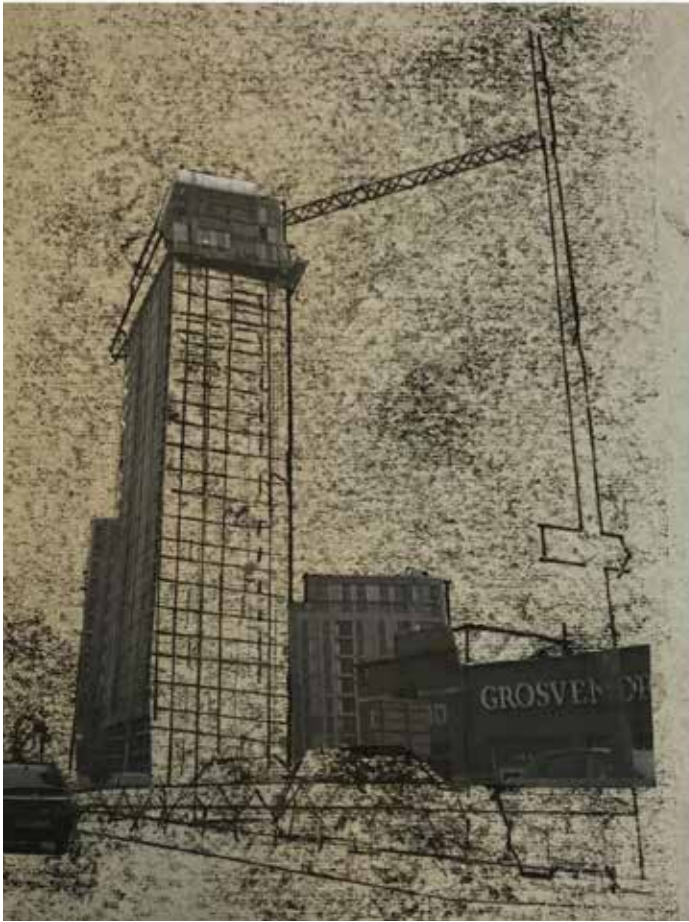
It is very important that if you are taking photographs of your original work, that you select a neutral environment with good quality light and a high-resolution camera. If you are scanning the pieces, make sure the resolution is also appropriate. General guidance for photography and scanning design work is available on the internet.

The images in this document are taken from architecture portfolio submissions to the University of Salford. They show the type and range of work that you can submit as part of your portfolio.



Kurt Sanchez - Architectural Sketches



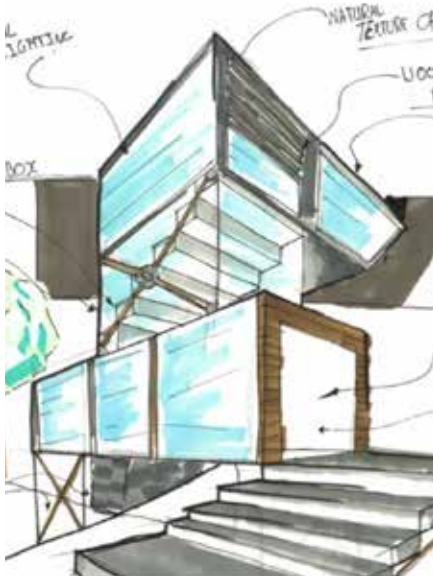


Helan Ali - Freehand Drawings

# WHAT ARE WE LOOKING FOR?

## FREEHAND DRAWING/SKETCHING

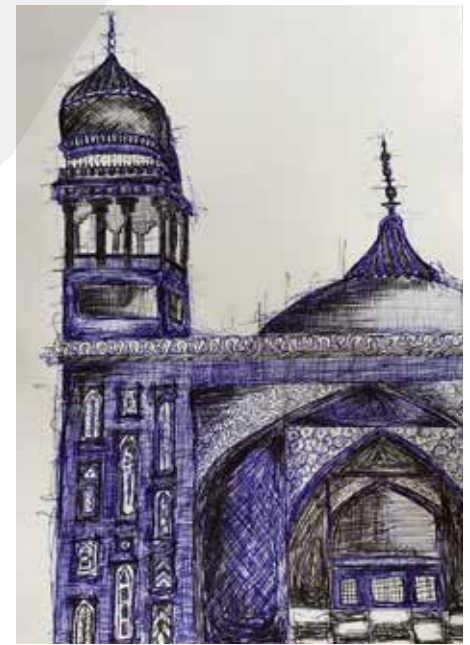
Many architects use quick free-hand sketches to communicate their ideas. We are interested in seeing your sketching and drawing skills.



Kurt Sanchez - Architectural Sketch



Reham Ahmed - Sketch



Aysha Hanif - Drawing

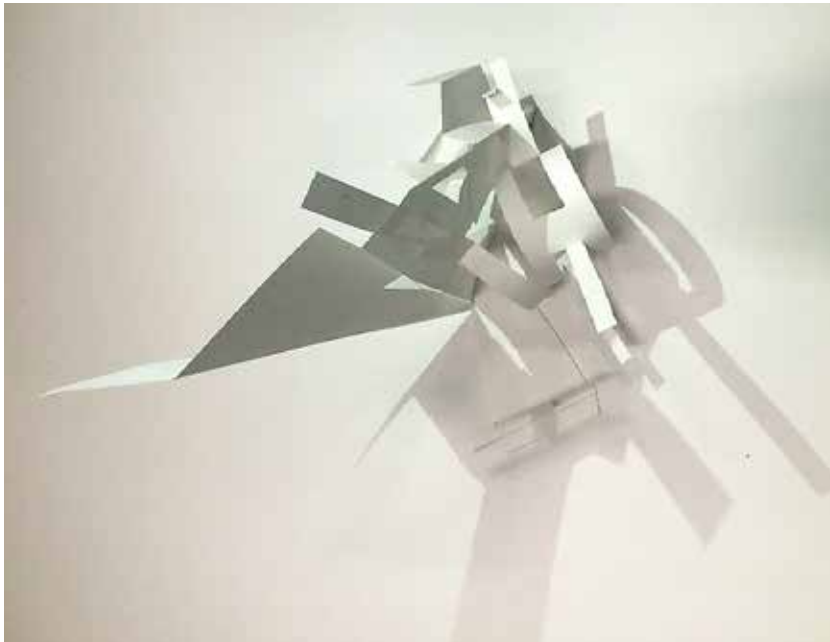


Helan Ali - Experiments with Shapes

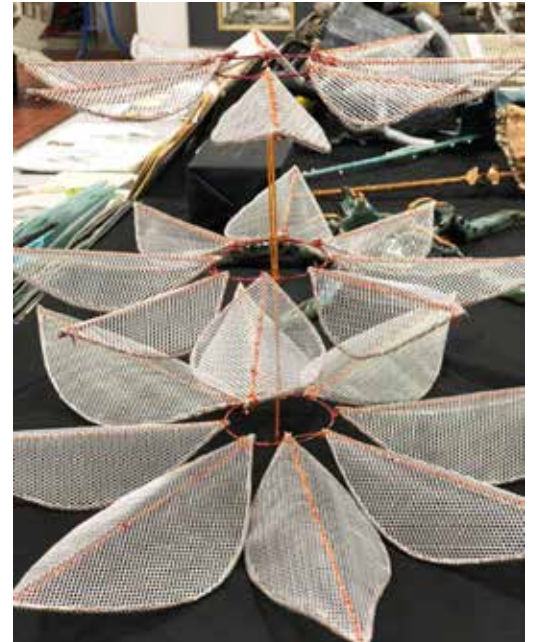


## 3D WORK SUCH AS MODELLING OR SCULPTING

Models are a way to understand a design. They demonstrate the dimensions of spaces, their relation to each other, how light enters them and much more. 3D work and models show your skills in model making and your ability to communicate the quality of architectural spaces.



Lauryn Anderson - Paper Model



Anisa Begum - Lighting Sculpture



Lauryn Anderson - My Road, Collage

## VISUAL/CONCEPTUAL IDEAS

What are you curious about when looking at architecture? How do you 'see' and interpret the world around you? Which connections do you make between a building and its context?

Such questions can be explored in a range of ways and images.



Helan Ali - Conceptual Ideas



Lauryn Anderson - Tate Modern, Photograph





Megan Reel - Photos from Portfolio

## GRAPHIC COMMUNICATION & PHOTOGRAPHY

A building can be presented in a range of different ways through photography and the medium of photography itself is very broad. Interpretations of a mood, travel photography, detail shots or digitally enhanced images can help you to show what you think about a building.



Anisa Begum - Photograph Inspired by Idris Khan



Aysha Hanif - Travel Photograph, Pakistan





## WHAT IS IT ABOUT ARCHITECTURE AND ART - OLD AND NEW - THAT FASCINATES YOU?

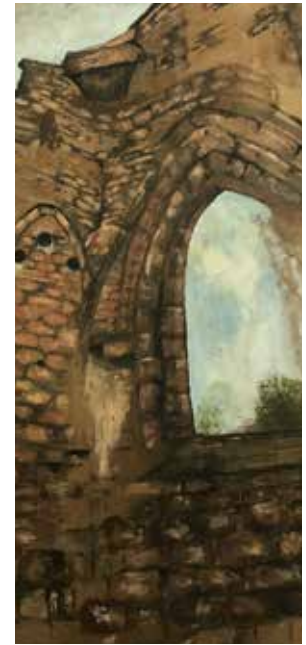
A personal view and interpretation of a building or art form can show us a lot about your interests.



Oliver Carter - Beetham Tower



Lauryn Anderson - Portrait



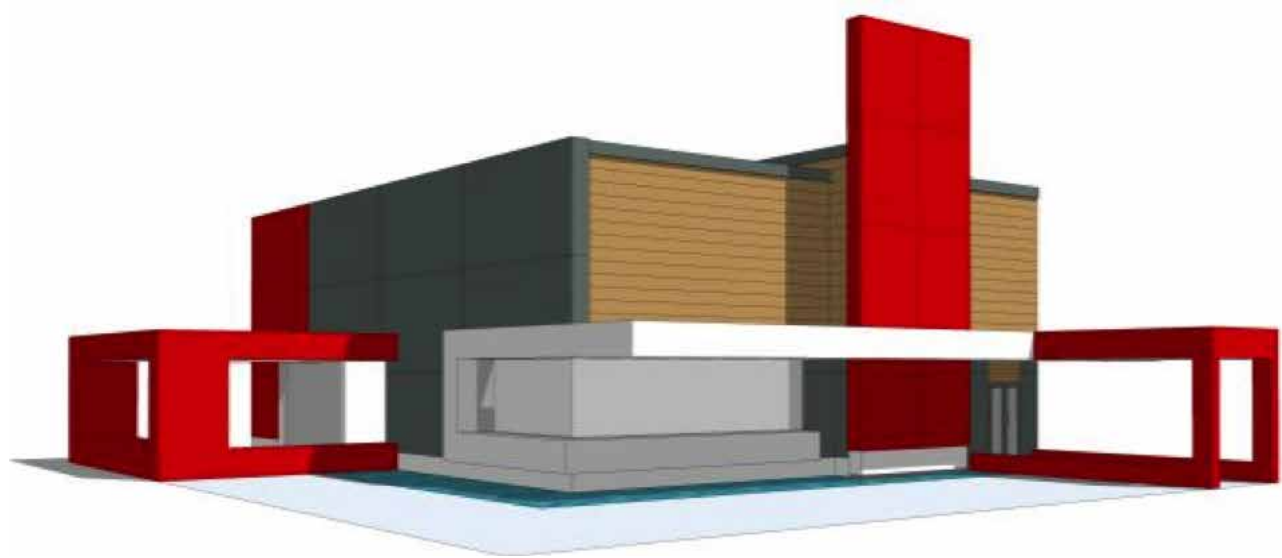
Helan Ali - Painting (Detail)



Oliver Carter - Old Town Hall, 3D Modelling

## DRAFTING

If you have any ICT skills we would like to know about it. Can you use modelling software, have you worked in an architectural firm and prepared drawings, have you modelled any existing building in a school project? ICT skills are not essential when submitting a portfolio - you will learn those while you are studying - but if you already have worked with drafting software, then such images can be a good addition to your portfolio.



Oliver Carter - House







## PORTFOLIO AIM

The aim of the portfolio presentation is to show your work in a coherent way so that its progression is visible. This requires you to think carefully about each project, including the presentation requirements, and to find an effective way to communicate the whole piece of work. Critical self-assessment is required: what do you want to show? How? Which is the best way to assemble it so that it best represents the outcome of your work?

**We are looking forward to seeing what you have put together for us.**

**THE BEST PORTFOLIOS ARE THOSE THAT  
SHOW PERSONAL EXPLORATIONS, EXPERIMENTS,  
AND REFLECTIONS, THROUGH A VARIETY  
OF TYPES OF WORK.**

Good luck with your application!

