

13 JANUARY
2024

UNDERGRADUATE

OPEN DAY GUIDE



University of
Salford
MANCHESTER

OPEN DAYS!

On behalf of all the staff and students at today's Open Day, we'd like to wish you a very warm welcome to the University of Salford!

During your Open Day, you can explore our campus and see where you could be living and studying; meet your future teaching staff and chat to current students about Salford life.

You'll also see the impact of our continued investment into our campus including our new £65 million Science and Engineering building, Energy House 2 – a world-leading research facility, and our new North of England Robotics Innovation Centre.

We're here to help you transition to university life, wherever you come from and whatever your background. From academic support to wellbeing, student finance to accommodation, we'll be with you each step of the way, so you can become the very best you can be. As we'd say, Unstoppable.

As a student at the University of Salford, please make sure you get involved with the wider opportunities you'll be offered to make the most of your time here. We'll help get you ready for work. We build relationships with industry leaders like Morgan Sindall, Morson Group and the BBC, which

allow us to offer fantastic opportunities for you to learn skills outside of the lecture theatre, including live briefs, internships and placements.

The newly launched Turing scheme can help you find an international work or study opportunity and many of our courses have a full year work placement option, so make sure you ask about how you can take advantage of everything we have to offer to benefit you during your time with us.

Our courses and facilities are designed to meet the needs of industry, and many are taught by current and former practitioners who bring their real-world skills and connections to help you make your first strides into your chosen career.

As you explore our campus today, we hope that you're inspired by the enthusiasm and expertise of our staff, the passion of our students, and the first-rate facilities on offer.

Your Open Day team



**IN THE MEANTIME,
YOU CAN EXPLORE
SALFORD THROUGH
OUR VIRTUAL HUB**

CONTENTS

ABOUT

- 05 Making the most of your Open Day
- 06 Getting help during the Open Day
- 07 Finding your way around

COURSES

- 08 Course presentations
- 19 General presentations, tours and drop-in sessions

CAMPUS

- 23 Your Students' Union
- 24 Food and drink
- 25 Student accommodation
- 27 Commuting from home
- 29 Student support and careers at Salford
- 32 Out and about in the city
- 33 Follow us online

STUDENT AMBASSADORS

Our Student Ambassadors will be on hand to help you throughout the campus. (they're the ones in the red tops). Whether you need pointing in the right direction or want to ask them about studying at Salford, they'll be happy to answer your questions.



MAKING THE MOST OF YOUR OPEN DAY

- 1| Get an overview of the University by attending our Welcome to Salford talk taking place on each campus.
- 2| Attend a course presentation for your chosen course. All subject presentations have at least two sessions running, so if you're torn between a couple of courses, you've got the opportunity to test them both out (pages 8-29).
- 3| Let one of our friendly Student Ambassadors take you on a tour of our Peel Park, Frederick Road and MediaCity campuses. Look out for the campus tour signs.
- 4| Visit our on-site accommodation at Peel Park Quarter and find out more about your options for accommodation from the team (page 40).
- 5| Use the hop-on-hop-off shuttle buses to view our other accommodation site at John Lester/Eddie Colman (page 41).
- 6| Meet our Students' Union team - find out more about clubs and societies and how to get involved!
- 7| Got a question about student support or finance? Attend one of our talks or information stands to find out more (page 34).
- 8| Come along to our 'Application Process' talk where we will discuss the UCAS process, how to make an application and hints and tips on your personal statement (page 34).
- 9| Take a tour of our sports and fitness facilities at Peel Park campus.
- 10| Don't forget to use your voucher for a free brew on us!



GETTING HELP DURING THE OPEN DAY

CHECK-IN DESKS

All of our check-in desks are staffed by members of the Recruitment Team who can help you with questions about the day, about how to find your way around campus or provide any other assistance if you need it.

STUDENT

AMBASSADORS

You'll spot our friendly Student Ambassadors and Marshals around campus all day – they're wearing red tops and they'll be happy to help you out. They're all current students and are happy to answer any questions about studying at Salford, as well as questions about the Open Day.

FIRE ALARM

In the event of a fire alarm during the Open Day, please exit the building as quickly and safely as possible. Our staff and students will help you find your way to the nearest fire assembly point.

ILLNESS OR

INJURY

If you feel ill or need first aid assistance during the day, please speak to a member of staff at any check-in point who will be able to arrange assistance for you.

SUPPORTING YOUR VISIT

ACCESSING

ADDITIONAL

FACILITIES

To view the facilities in each of our buildings, you can use our interactive google map at salford.ac.uk/find-us. This includes accessible toilets, gender-neutral toilets, baby-change facilities, water refill stations and cash machines. Click on each building's icon to see its facilities.

QUIET ROOMS

We know an Open Day can be busy with lots of new people and things to do and can sometimes be overwhelming.

If you need a break from the event bustle or to observe an obligatory prayer during the event, there are dedicated quiet spaces available. If you require the use of one of these spaces, please speak to a staff member who will show you to the space.

**Chapman Building, 1st floor social space,
Peel Park campus**

Beehive, Frederick Road campus

First floor social space, MediaCity campus

FINDING YOUR WAY AROUND

Our Open Days take place across our three campuses, including MediaCity. The location of your subject presentation and facilities tour will depend on the course you are interested in. You can find out which courses are based where on pages 8-29.

BUSES

Two different bus loops will be running during the day: a MediaCity shuttle and our Accommodation shuttle.

VISITING

MEDIACITY

For visitors to our MediaCity campus, we are running a shuttle departing from New Adelphi Building every 15 minutes, which, on its return journey, will also stop at our John Lester/Eddie Colman accommodation site.

Parking is limited at MediaCity and there is a charge. So if you're driving to our Open Day, we recommend parking for free at our Peel Park campus, then catching the shuttle to MediaCity from New Adelphi Building. Free parking is available at Irwell Place car park (use the postcode M5 4WT to park at Irwell Place).

If you do decide to drive to MediaCity and have a sat nav, you can use the postcode M50 2EQ.

ACCOMMODATION

SHUTTLE

The Accommodation shuttle takes you between Peel Park campus and our accommodation sites: John Lester and Eddie Colman Courts and Peel Park Quarter (see page 40 for more information about accommodation).

You can also easily walk between our Peel Park and Frederick Road campuses and accommodation sites, ask one of our staff or Student Ambassadors and we'll point you in the right direction!



COURSE PRESENTATIONS

We have listed our subject areas alphabetically so you can find the courses of interest to you. As well as giving you an overview of the course and its content, subject presentations will give you the chance to chat directly with our academic staff, ask any questions you might have and where appropriate, have a tour of facilities available at Salford.

All of our courses are offering at least two subject talks to allow you to attend an additional session if you want to explore more than one course.

ARTS, MEDIA AND CREATIVE TECHNOLOGIES TIMETABLE

Many of our courses are available with placement years and foundation years. Have a look at our course finder for more information at salford.ac.uk/courses

SESSION	COURSES COVERED	TIMES	LOCATION	CAMPUS
PRESENTATIONS AT OUR MEDIACITY CAMPUS				
Creative Digital Media and Gaming course sessions. Join our tutors for a presentation and Q&A about your course.	BA (Hons) Animation*	10.45am-11.45am; 1.30pm-2.30pm	MediaCity, Room 3.30	MediaCity
	BSc (Hons) Creative Computing*	10.45am-11.45am; 1.30pm-2.30pm	MediaCity, Room 3.05	MediaCity
	DipHE Creative and Digital Media (subject to approval)	10.45am-11.45am; 1.30pm-2.30pm	Damson Room 04	MediaCity
	BA (Hons) Digital Media and Extended Reality (XR)*	10.45am-11.45am; 1.30pm-2.30pm	MediaCity, Room 2.16	MediaCity
	BSc (Hons) Games Design and Production*	10.45am-11.45am; 1.30pm-2.30pm	MediaCity, Room 3.28	MediaCity
	BSc (Hons) Media Technology	10.45am-11.45am; 1.30pm-2.30pm	MediaCity, Room 2.07	MediaCity
	BA (Hons) Post Production and VFX	10.45am-11.45am; 1.30pm-2.30pm	MediaCity, Room 2.19	MediaCity
	DipHE Social Media Content Creation (subject to approval)	10.45am-11.45am; 1.30pm-2.30pm	Damson Room 04	MediaCity
Film, TV and Media courses sessions. Join our tutors for a presentation and Q&A about your course.	BA (Hons) Digital Video Production and Marketing	10.45am-11.45am; 1.30pm-2.30pm	MediaCity, Room 3.02	MediaCity
	BA (Hons) Film Production	10.45am-11.45am; 12noon-1pm; 1.45pm-2.45pm	MediaCity, Room 0.11	MediaCity
	BA (Hons) English and Film BA (Hons) Film Studies	10.45am-11.45am; 1.30pm-2.30pm	MediaCity, Room 03 (Damson)	MediaCity
	BA (Hons) TV and Radio Production	10.45am-11.45am; 12noon-1pm; 1.45pm-2.45pm	MediaCity, Room 3.10/3.11	MediaCity
Journalism course session. Join our tutors for a presentation and Q&A about your course.	BA (Hons) Journalism (Broadcast) BA (Hons) Journalism (Multimedia) BA (Hons) Journalism with Public Relations	10.45am-11.45am; 12noon-1pm; 1.45pm-2.45pm	MediaCity, Room 3.19	MediaCity
FILM PRODUCTION SHOOTING STAGES TOUR				
Stage Tour	Tours of our new Shooting Stages and Design Spaces are available for those interested in Film Production. These are situated on the main Peel Park Campus . There is no need to book, simply drop in to our Newton Building on our Peel Park Campus.	Tours last approximately 25 minutes and commence every 30 mins from 12noon-4pm, last tour at 3.30pm. Each tour has a capacity of 30 people and is offered on an arrival basis.	Please meet in Newton Building Foyer	Peel Park

*This course is also available with Foundation Year.

Continued on next page >

ARTS, MEDIA AND CREATIVE TECHNOLOGIES TIMETABLE

Many of our courses are available with placement years and foundation years. Have a look at our course finder for more information at salford.ac.uk/courses

SESSION	COURSES COVERED	TIMES	LOCATION	CAMPUS
PRESENTATIONS AT OUR PEEL PARK CAMPUS				
Art and Design course sessions. Join our tutors for a presentation and Q&A about your course.	BA (Hons) Costume Design*	10.45am-11.45am; 1.30pm-2.30pm	Peel Building, Room 201	Peel Park
	BA (Hons) Fashion Business and Promotion	10.45am-11.45am; 1.30pm-2.30pm	New Adelphi Building, Room 6.20	Peel Park
	BA (Hons) Fashion Design*	10.45am-11.45am; 1.30pm-2.30pm	New Adelphi Building, Room 6.14	Peel Park
	BA (Hons) Fashion Image Making and Styling*	10.45am-11.45am; 1.30pm-2.30pm	New Adelphi Building, Room 6.40	Peel Park
	BA (Hons) Film, TV and Stage Design*	10.45am-11.45am; 1.30pm-2.30pm	New Adelphi Building, Room 5.35F	Peel Park
	BA (Hons) Fine Art*	10.45am-11.45am; 1.30pm-2.30pm	New Adelphi Building, Room 6.33	Peel Park
	BA (Hons) Graphic Design*	10.45am-11.45am; 1.30pm-2.30pm	New Adelphi Building, Room 5.16	Peel Park
	BA (Hons) Interior Design*	10.45am-11.45am; 1.30pm-2.30pm	New Adelphi Building, Room 5.35E	Peel Park
	BA (Hons) Photography*	10.45am-11.45am; 1.30pm-2.30pm	New Adelphi Building, Room 5.17	Peel Park
Art and Design Foundation Year drop-in	All Art, Design and Media Foundation Year courses	11.45am-12.15pm; 2.30pm-3pm	New Adelphi Building, Room 5.22	Peel Park
Dance course session. Join our tutors for a presentation and Q&A about your course.	BA (Hons) Dance	10.45am-11.45am; 1.30pm-2.30pm	New Adelphi Building, Room 3.04	Peel Park
	Dance workshop	12noon-1pm	New Adelphi Building, Room 3.04	Peel Park
Music course sessions. Join our tutors for a presentation and Q&A about your course. You will also have an optional 30 minute tour of our music facilities.	BA (Hons) Music: Creative Music Technology* BA (Hons) Music: Popular Music and Recording* BA (Hons) Music Management and Creative Enterprise	10.45am-11.45am; 1.30pm-2.30pm	Peel Building, Peel Hall	Peel Park
Performance course session. Join our tutors for a presentation and Q&A about your course.	BA (Hons) Comedy Writing and Performance BA (Hons) Media and Performance	10.45am-11.45am; 1.30pm-2.30pm	New Adelphi Building, Room 1.16	Peel Park
	BA (Hons) Technical Theatre (Production and Design)	10.45am-11.45am; 1.30pm-2.30pm	New Adelphi Building, Main Theatre	Peel Park
	BA (Hons) Theatre and Performance Practice	10.45am-11.45am; 1.30pm-2.30pm	New Adelphi Building, Studio Theatre	Peel Park

*This course is also available with Foundation Year.



BUILT AND NATURAL ENVIRONMENTS TIMETABLE

Many of our courses are available with placement years and foundation years. Have a look at our course finder for more information at salford.ac.uk/courses

SESSION	COURSES COVERED	TIMES	LOCATION	CAMPUS
PRESENTATIONS AT OUR PEEL PARK CAMPUS				
Architecture course session. Join our tutors for a presentation and Q&A about your course.	BSc (Hons) Architecture BSc (Hons) Architectural Design and Technology* BSc (Hons) Architectural Engineering* BSc (Hons) Interior Architecture*	10.45am-11.45am; 1.30pm-2.30pm	SEE Building, Room 01.24	Peel Park
Built Environment course sessions. Join our tutors for a presentation and Q&A about your course.	BSc (Hons) Construction Project Management* BSc (Hons) Quantity Surveying*	10.45am-11.45am; 1.30pm-2.30pm	SEE Building, Room 00.16	Peel Park
	HNC Construction	10.45am-11.45am; 1.30pm-2.30pm	SEE Building, Room 03.05	Peel Park
	BSc (Hons) Building Surveying* BSc (Hons) Real Estate Development and Management*	10.45am-11.45am; 1.30pm-2.30pm	SEE Building, Room 00.17	Peel Park
Geography and Environmental Management course session. Join our tutors for a presentation and Q&A about your course.	BSc (Hons) Environmental Geography with Professional Experience BSc (Hons) Environmental Geography with Studies in the USA BSc (Hons) Environmental Management* BSc (Hons) Geography*	10.45am-12noon; 1.30pm-2.45pm	SEE Building, Room 02.12	Peel Park

*This course is also available with Foundation Year.



BUSINESS, ACCOUNTING AND LAW TIMETABLE

Many of our courses are available with placement years and foundation years. Have a look at our course finder for more information at salford.ac.uk/courses

SESSION	COURSES COVERED	TIMES	LOCATION	CAMPUS
PRESENTATIONS AT OUR PEEL PARK CAMPUS				
Reimagining your learning An introduction to Salford Business School.	All Business, Accounting and Law courses	10.40am-11am; 1.30pm-1.45pm	Maxwell Building, Room 620	Peel Park
Subject sessions Hear more about the course you're interested in from our senior academic team, discover what and how we teach, and gain exclusive insight into life at Salford from our current students.	See the next page for details on each course	11.15am-12.15pm; 2pm-3pm	Maxwell Building	Peel Park
Academic and support stands Learn more about your course and our dedicated School societies and gain further insight into student life as a Salford Business School student.	All Business, Accounting and Law courses	Drop-in 10am-4pm	Maxwell Building, Sixth floor	Peel Park
Lunch and refreshments Join us in our student kitchen for complimentary lunch and refreshments, and learn first-hand about the free facilities available to our students.	All Business, Accounting and Law courses	Lunch served 12noon-2.30pm	Maxwell Building, Sixth floor	Peel Park



BUSINESS, ACCOUNTING AND LAW TIMETABLE

Many of our courses are available with placement years and foundation years. Have a look at our course finder for more information at salford.ac.uk/courses

SESSION	COURSES COVERED	TIMES	LOCATION	CAMPUS
PRESENTATIONS AT OUR PEEL PARK CAMPUS				
Accounting, Finance and Economics	BSc (Hons) Accounting and Finance BSc (Hons) Business Management with Economics BSc (Hons) Business Management with Finance	11.15am-12.15pm; 2pm-3pm	Maxwell Building, Room 719/721	Peel Park
Business Management course sessions. Join our tutors for a presentation and Q&A about your course.	BSc (Hons) Business Management BSc (Hons) International Business Management	11.15am-12.15pm; 2pm-3pm	Maxwell Building, Room 720/722	Peel Park
	BSc (Hons) Business Management with Entrepreneurship	11.15am-12.15pm; 2pm-3pm	Maxwell Building, Room 823	Peel Park
	BSc (Hons) Business Management with Innovation and Technology DipHE Business Analytics - new for 2024 (subject to approval)	11.15am-12.15pm; 2pm-3pm	Maxwell Building, Room 816	Peel Park
	BSc (Hons) Business with Supply Chain and Project Management DipHE Supply Chain and Project Management - new for 2024 (subject to approval)	11.15am-12.15pm; 2pm-3pm	Maxwell Building, Room 819	Peel Park
	BSc (Hons) Business with Human Resource Management	11.15am-12.15pm; 2pm-3pm	Maxwell Building, Room 822	Peel Park
	BSc (Hons) Business Management with Marketing	11.15am-12.15pm; 2pm-3pm	Maxwell Building, Room 824	Peel Park
	BSc (Hons) Business Management with Sport	11.15am-12.15pm; 2pm-3pm	Maxwell Building, Room 725	Peel Park
	HND Esports Business Management and BSc (Hons) Top-up	11.15am-12.15pm; 2pm-3pm	Maxwell Building, Room 727	Peel Park
Law course sessions	LLB (Hons) Law LLB (Hons) Law with Criminology BSc (Hons) Business Management with Law	11.15am-12.15pm; 2pm-3pm	Maxwell Building, Room 620	Peel Park



COMPUTING AND ENGINEERING TIMETABLE

Many of our courses are available with placement years and foundation years. Have a look at our course finder for more information at salford.ac.uk/courses

SESSION	COURSES COVERED	TIMES	LOCATION	CAMPUS
PRESENTATIONS AT OUR MEDIACITY CAMPUS				
Computer Networks course session. Join our tutors for a presentation, Q&A about your course and tour of our facilities.	BSc (Hons) Computer Networks	10.45am-11.45am; 1.30pm-2.30pm	MediaCity, Room 3.34	MediaCity
PRESENTATIONS AT OUR PEEL PARK CAMPUS				
Acoustics course session. Join our tutors for a presentation, Q&A about your course and tour of acoustics facilities and recording studios.	MEng/BEng (Hons) Acoustical and Audio Engineering*	10.45am-12noon; 1.30pm-2.45pm	Lady Hale Building, Room G03	Peel Park
Aeronautical and Aircraft Engineering course session. Join our tutors for a presentation, Q&A about your course and lab tour.	MEng/BEng (Hons) Aeronautical Engineering* MEng/BEng (Hons) Aircraft Engineering with Pilot Studies	10.45am-12noon; 1.30pm-2.45pm	SEE Building, Room 00.11	Peel Park
Civil Engineering course session. Join our tutors for a presentation, Q&A about your course and lab tour.	MEng/BEng (Hons) Civil Engineering*	10.45am-12noon; 1.30pm-2.45pm	SEE Building, Room 02.11	Peel Park
Computing course session. Join our tutors for a presentation, Q&A about your course and lab tour.	BSc (Hons) Computer Science* BSc (Hons) Computer Science with Cyber Security* BSc (Hons) Software Engineering*	10.45am-11.45am; 1.30pm-2.30pm	SEE Building, Room 02.04	Peel Park
Diploma in Higher Education courses. Come to the session to hear more about our new DipHE courses for 2024 (subject to approval)	Media and Network Systems Digital and Software Technology	12noon-1pm	Meet in SEE Building Foyer	Peel Park
Electronic Engineering, Electrical and Electronic Engineering course session. Join our tutors for a presentation, Q&A about your course and lab tour.	BEng (Hons) Electrical and Electronic Engineering* BEng (Hons) Electronic Engineering*	10.45am-12noon; 1.30pm-2.45pm	SEE Building, Room 03.01	Peel Park
Maths course session. Join our tutors for a presentation and Q&A about your course.	BSc (Hons) Mathematics*	10.45am-11.45am; 1.30pm-2.30pm	SEE Building, Room 02.01	Peel Park
Mechanical Engineering course session. Join our tutors for a presentation, Q&A about your course and lab tour.	MEng/BEng (Hons) Mechanical Engineering*	10.45am-12noon; 1.30pm-2.45pm	SEE Building, Room 02.02	Peel Park
Sound Engineering and Production course session. Join our tutors for a presentation, Q&A about your course and tour of acoustics facilities and recording studios.	BSc (Hons) Sound Engineering and Production	10.45am-12noon; 1.30pm-2.45pm	Lady Hale Building, Room G06/07	Peel Park

*This course is also available with Foundation Year.

ENGLISH, HUMANITIES AND SOCIAL SCIENCES TIMETABLE

Many of our courses are available with placement years and foundation years. Have a look at our course finder for more information at salford.ac.uk/courses

SESSION	COURSES COVERED	TIMES	LOCATION	CAMPUS
PRESENTATIONS AT OUR PEEL PARK CAMPUS				
English, Drama and Creative Writing course session. Join our tutors for a presentation and Q&A about your course.	BA (Hons) Creative Writing (Multidiscipline)* BA (Hons) English Language* BA (Hons) English Literature* BA (Hons) English Multidiscipline*	10.45am-11.45am; 1.30pm-2.30pm	Chapman Building, Lecture Theatre 4	Peel Park
Politics and Contemporary History course session. Join our tutors for a presentation and Q&A about your course.	BA (Hons) Contemporary History and Politics BA (Hons) Contemporary Military and International History BA (Hons) Intelligence Analysis BA (Hons) International Relations and Politics BA (Hons) Politics	10.45am-12.00pm; 1.30pm-2.45pm	Chapman Building, Lecture Theatre 3	Peel Park
PRESENTATIONS AT OUR FREDERICK ROAD CAMPUS				
Criminology and Sociology course session. Join our tutors for a presentation and Q&A about your course.	BSc (Hons) Criminology* BSc (Hons) Criminology and Sociology* BSc (Hons) Criminology with Counselling* BSc (Hons) Sociology*	10.45am-11.45am; 1.30pm-2.30pm	Allerton Building, Room A216	Frederick Road
Professional Policing course session. Join our tutors for a presentation and Q&A about your course.	BSc (Hons) Professional Policing BSc (Hons) Professional Policing Practice (Police Constable Degree Apprenticeship)	10.45am-11.45am; 1.30pm-2.30pm	Mary Seacole Building, Room 1.75	Frederick Road
DROP-IN WITH ACADEMIC STAFF				
Throughout the event we'll be running a drop-in for courses in our School of Health and Society, where you will have the opportunity to chat with our academic staff about the courses you are interested in.	All social sciences courses	10am-4pm (apart from when the course sessions are taking place)	Allerton Building, first floor	Frederick Road

*This course is also available with Foundation Year.



HEALTH SCIENCES TIMETABLE

Many of our courses are available with placement years and foundation years. Have a look at our course finder for more information at salford.ac.uk/courses

SESSION	COURSES COVERED	TIMES	LOCATION	CAMPUS
PRESENTATIONS AT OUR FREDERICK ROAD CAMPUS				
Diagnostic Radiography course session. Join our tutors for a presentation, Q&A about your course and laboratory tour.	BSc (Hons) Diagnostic Radiography	10.45am-11.45am; 1.30pm-2.30pm	Mary Seacole Building, Room 1.22	Frederick Road
Occupational Therapy course session. Join our tutors for a presentation and Q&A about your course.	BSc (Hons) Occupational Therapy	10.45am-11.45am; 1.30pm-2.30pm	Allerton Building, Room L427	Frederick Road
Physiotherapy course session. Join our tutors for a presentation and Q&A about your course.	BSc (Hons) Physiotherapy	10.45am-11.45am; 1.30pm-2.30pm	Mary Seacole Building, Room 1.93	Frederick Road
Podiatry course session. Join our tutors for a presentation, Q&A about your course and tour of the Podiatry clinic.	BSc (Hons) Podiatry	10.45am-11.45am	Podiatry Clinic	Frederick Road
Prosthetics and Orthotics course session. Join our tutors for a presentation, Q&A about your course and facilities tour.	BSc (Hons) Prosthetics and Orthotics	10.45am-11.45am; 1.30pm-2.30pm	Brian Blatchford Building, Room PO35	Frederick Road
Psychology course session. Join our tutors for a presentation and Q&A about your course.	BSc (Hons) Psychology BSc (Hons) Psychology and Counselling BSc (Hons) Psychology and Criminology BSc (Hons) Psychology of Human and Animal Behaviour BSc (Hons) Psychology of Sport	10.45am-11.45am; 1.30pm-2.30pm	Allerton Building, Room A218	Frederick Road
Sports course sessions. Join our tutors for a presentation, Q&A about your course and facilities tour.	BSc (Hons) Sports Coaching Analysis (Top-up) BSc (Hons) Sports Science*	10.45am-11.45am; 1.30pm-2.30pm	Mary Seacole Building, Room 1.36	Frederick Road
	BSc (Hons) Sport Rehabilitation	10.45am-11.45am; 1.30pm-2.30pm	Mary Seacole Building, Room 1.51	Frederick Road
TOURS OF OUR SIMULATION SUITES				
Simulation suite tours - Physiotherapy	Tours of our simulation suites will be available to those interested in our Physiotherapy course. Please see our check-in team at the desk in the Mary Seacole Building to book your place. Please note, all tours have a maximum capacity and are subject to availability.	Tours will last approximately 20 minutes and will run at 11.45am; 12.05pm; 12.25pm; 12.45pm; 2.45pm and 3.05pm	Mary Seacole Building	Frederick Road
DROP-IN WITH ACADEMIC STAFF				
Throughout the event we'll be running a drop-in for courses in our School of Health and Society, where you will have the opportunity to chat with our academic staff about the courses you are interested in.	All health sciences courses	10am-4pm (apart from when the course sessions are taking place)	Allerton Building, first floor	Frederick Road

*This course is also available with Foundation Year.

HUMAN AND NATURAL SCIENCES TIMETABLE

Many of our courses are available with placement years and foundation years. Have a look at our course finder for more information at salford.ac.uk/courses

SESSION	COURSES COVERED	TIMES	LOCATION	CAMPUS
PRESENTATIONS AT OUR PEEL PARK CAMPUS				
Biology course session. Join our tutors for a presentation, Q&A about your course and laboratory tour.	BSc (Hons) Biological Sciences* BSc (Hons) Marine Biology* BSc (Hons) Zoology*	10.45am-12noon; 1.30pm-2.45pm	Chapman Building, Lecture Theatre 1	Peel Park
Biomedicine course session. Join our tutors for a presentation, Q&A about your course and laboratory tour.	BSc (Hons) Biomedical Science* BSc (Hons) Human Biology and Infectious Diseases*	10.45am-12noon; 1.30pm-2.45pm	Lady Hale Building, Room G14	Peel Park
Chemical Sciences course session. Join our tutors for a presentation, Q&A about your course and laboratory tour.	BSc (Hons) Biochemistry* BSc (Hons) Biochemistry with Studies in the USA BSc (Hons) Chemistry BSc (Hons) Pharmaceutical Science*	10.45am-12noon; 1.30pm-2.45pm	Chapman Building, Seminar Room 1/2	Peel Park
Physics course session. Join our tutors for a presentation, Q&A about your course and laboratory tour.	BSc (Hons) Physics*	10.45am-11.45am; 1.30pm-2.30pm	SEE Building, Room 03.07	Peel Park
Wildlife course session. Join our tutors for a presentation and Q&A about your course.	BSc (Hons) Wildlife Conservation* BSc (Hons) Wildlife Conservation with Zoo Biology*	10.45am-12noon; 1.30pm-2.45pm	Chapman Building, Lecture Theatre 3	Peel Park

*This course is also available with Foundation Year.



NURSING, MIDWIFERY, COUNSELLING AND SOCIAL WORK TIMETABLE

Many of our courses are available with placement years and foundation years. Have a look at our course finder for more information at salford.ac.uk/courses

SESSION	COURSES COVERED	TIMES	LOCATION	CAMPUS
PRESENTATIONS AT OUR FREDERICK ROAD CAMPUS				
Counselling and Psychotherapy course session. Join our tutors for a presentation and Q&A about your course.	BSc (Hons) Counselling and Psychotherapy: Professional Practice*	10.45am-11.45am; 1.30pm-2.30pm	Mary Seacole Building, Room 3.02	Frederick Road
Midwifery course session. Join our tutors for a presentation and Q&A about your course.	BSc (Hons) Midwifery	10.45am-11.45am; 1.30pm-2.30pm	Mary Seacole Building, Room G21	Frederick Road
Nursing course sessions. Join our tutors for a presentation and Q&A about your course.	BSc (Hons) Nursing (Children and Young People)**	10.45am-11.45am; 1.30pm-2.30pm	Mary Seacole Building, Room 1.81	Frederick Road
	BSc (Hons) Nursing (Adult)**	10.45am-11.45am, 12noon-1pm, 2pm-3pm	Mary Seacole Building, Room 2.79	Frederick Road
	BSc (Hons) Nursing (Mental Health)**	10.45am-11.45am; 1.30pm-2.30pm	Mary Seacole Building, Room 2.43	Frederick Road
	BSc (Hons) Nursing Studies (Top up)	10am-4pm Drop-in	Meet on Allerton Concourse	Frederick Road
	FdSc Nursing Associate (Direct Entry Route)	10.45am-11.45am; 1.30pm-2.30pm	Mary Seacole Building, Room 2.60	Frederick Road
Social Work and Integrated Practice course session. Join our tutors for a presentation and Q&A about your course.	BSc (Hons) Learning Disabilities Nursing and Social Work (Integrated Practice) BSc (Hons) Social Work	10.45am-11.45am; 1.30pm-2.30pm	Allerton Building, Room L409	Frederick Road
TOURS OF OUR SIMULATION SUITES				
Nursing courses	Tours of our simulation suites will be available to those interested in our Nursing and Midwifery courses. Please see our check-in team at the desk in Mary Seacole Building to book your place. Please note, all tours have a maximum capacity and are subject to availability.	Tours will last approximately 30 minutes and will run at 10.15am; 10.45am; 11.15am; 1.15pm; 1.45pm, 2.15pm and 3.30pm.	Mary Seacole Building, Room 2.15	Frederick Road
Midwifery course		Tours will last approximately 45 minutes and will run at 10.15am, 11am, 11.45am, 1.15pm, 2pm and 2.45pm.	Mary Seacole Building, Room 2.56	
DROP-IN WITH ACADEMIC STAFF				
Throughout the event we'll be running a drop-in for our courses in our School of Health and Society, where you will have the opportunity to chat with our academic staff about the courses you are interested in.	All nursing, midwifery and social work courses	10am-4pm (apart from when the course sessions are taking place)	Allerton Building, first floor	Frederick Road

*This course is also available with Foundation Year.

**This course is also available with Health Care Foundation Year and as an Accelerated option.

GENERAL PRESENTATIONS, TOURS AND DROP-IN SESSIONS

Our general presentations, tours and drop-in sessions will give you more information about life at Salford and the support available when you study here. These activities take place across our campuses to complement the subject presentations on offer.

PRESENTATIONS, TOURS AND DROP-IN SESSIONS



TITLE	DESCRIPTION	TIME	LOCATION	CAMPUS
WELCOME				
Welcome to Salford	Taking place on all three campuses, our staff and students give you the low-down on our University, campus, and what studying here is like. You'll also hear about our student demographic, our facilities and how we support our students.	10am-10.30am	Maxwell Upper Hall	Peel Park
		1pm-1.30pm	Lady Hale Building, Room G14	
		10am-10.30am; 1pm-1.30pm	Mary Seacole Building, Room G21	Frederick Road
		10am-10.30am; 1pm-1.30pm	MediaCity, Room 0.11 (DPL)	MediaCity
ACCOMMODATION AT SALFORD				
Accommodation information stands	There are accommodation stands at each of our campuses during the Open Day providing information and guidance about all accommodation options.	10am-4pm	Lowry 1, Peel Park Quarter Accommodation	Peel Park
			Allerton Building, ground floor	Frederick Road
			MediaCity, ground floor	MediaCity
Accommodation talk	Find out more about all accommodation options, including those off campus and private accommodation options. We will talk through prices, recommendations and advice on booking.	11.15am-11.45am; 2.15pm-2.45pm	Allerton Building, Room L417	Frederick Road
			MediaCity, Room 04 (Damson)	MediaCity
Accommodation tours	Running throughout the day, our hop-on and hop-off accommodation bus will give you the chance to view our John Lester, Eddie Colman and Peel Park Quarter accommodation sites.	9.30am-4pm	See page 7 in the guide for more information about finding your way around.	
CAMPUS TOURS				
Campus tours	Join us on a guided tour of the campus led by our Student Ambassadors. You should allow approximately 30-45 minutes to complete the tour. Tours can be booked from the locations stated on each campus. The busiest period for tours is 12noon-2pm, so save yourself a queue and perhaps head there earlier or later in the day!	11am-4pm	Campus tour gazebo, Chapman Square	Peel Park
			Mary Seacole Building, reception	Frederick Road
			MediaCity, ground floor	MediaCity

PRESENTATIONS, TOURS AND DROP-IN SESSIONS

TITLE	DESCRIPTION	TIME	LOCATION	CAMPUS
FUNDING YOUR STUDIES				
Applying for Student Finance	Our Recruitment Team will talk you through the process for student finance applications, as well as giving you the chance to ask any questions.	10.45am-11.30am; 1.45pm-2.30pm	Chapman Building, Lecture Theatre 2	Peel Park
			Allerton Building, Room L415	Frederick Road
			MediaCity, Room 01 (Damson)	MediaCity
STUDENT SUPPORT AT SALFORD				
askUS student support team	askUS is our student support service at Salford, and the team are able to offer advice and guidance on any type of support you may need while studying with us. This includes finance, wellbeing, disability support, career development and much more. Disability 1-1 appointments The team will be available to provide 1-1 advice and guidance to all students wanting to find out more about disability support at University. Appointments are bookable at the stand.	10am-4pm	The Library Hub, Clifford Whitworth Library	Peel Park
			Allerton Building, ground floor	Frederick Road
			MediaCity, ground floor	MediaCity
Student support, wellbeing and disability talk	At Salford we take pride in supporting our students. Our team will run through how student support at Salford works, as well as the range of different types of student groups and support we offer such as mature learners, LGBTQ* students, disabled students and more. This talk will also cover how the University supports students who have experience of local authority care , including advice on student funding. Student support, wellbeing and disability information Just in case you're not able to make the presentations, you're welcome to drop in with our team to ask any questions about student specialist support available.	12.15pm-1pm; 2.45pm-3.30pm	Chapman Building, Lecture Theatre 6	Peel Park
			Allerton Building, Room L420	Frederick Road
			MediaCity, Room 01 (Damson) - 12.15pm-1pm MediaCity, Room 04 (Damson) - 2.45pm-3.30pm	MediaCity
Learn English for Academic Purposes	At Salford we provide free English Language short courses designed to run alongside your course to improve the quality of your academic work. This includes: academic reading and writing, making effective presentations, thesis writing and 1-1 tutorials.	10am-4pm	The Library Hub, Clifford Whitworth Library	Peel Park
APPLYING TO UNIVERSITY				
The application process	Find out more about how the UCAS process works, how to make an application and hints and tips on writing your personal statement. We will also cover information and guidance about what to expect at interview and what to include in a portfolio (most relevant for Health, Media and Art and Design courses).	11.30am-12.15pm; 2.30pm-3.15pm	Chapman Building, Lecture Theatre 2	Peel Park
			Allerton Building, Room L415	Frederick Road
			MediaCity, Room 01 (Damson)	MediaCity

PRESENTATIONS, TOURS AND DROP-IN SESSIONS

TITLE	DESCRIPTION	TIME	LOCATION	CAMPUS
DEGREE APPRENTICESHIPS				
Degree Apprenticeships at Salford	Come and see our Degree Apprenticeships team to find out what's on offer here at the University. We've got a number of programmes leading to exciting careers in fields such as nursing, construction, biomedical science, engineering and public service.	10am-4pm	The Library Hub, Clifford Whitworth Library	Peel Park
INTERNATIONAL OPPORTUNITIES AND LANGUAGES AT SALFORD				
International opportunities	Experience the opportunity of a lifetime and take your studies or work overseas. Chat to the team to discover the various schemes in place.	10am-4pm	The Library Hub, Clifford Whitworth Library	Peel Park
Languages at Salford	Come and find out how you can learn Arabic, Chinese, French, German, Italian, Japanese, Spanish or British Sign Language with the University Wide Language Programme.	10am-4pm	The Library Hub, Clifford Whitworth Library	Peel Park
TOURS				
Library tour - tours last approximately 15 minutes	Pop in during the day for a tour and find out more about our 'library in the park'.	10am-4pm	Clifford Whitworth Library	Peel Park
Maker Space tours	The Maker Space is a digital fabrication hub open to all students to develop design and making skills. We provide skills, knowledge and full access to our industry standard equipment including 3D printing, laser cutting and CNC machining to solve design and manufacturing challenges. Please head to the SEE Building to have a tour and see how we can support your studies.	10.30am-3pm	SEE Building, Foyer	Peel Park
LIFE OUTSIDE THE CLASSROOM				
Team Salford stand	Find out about the exciting sports and activities opportunities available at Salford.	10am-4pm	The Library Hub, Clifford Whitworth Library	Peel Park
Sport at Salford - facilities tour	Take a tour of our sports and fitness facilities and get an overview of the activities on offer.	12pm-4pm	Sports Centre	Peel Park
Salford's Students' Union Talk	Come and hear how the Students' Union can support you during your time at Salford. From academic support to societies, the Students' Union is here to help you settle in and make the most of your time at Salford.	11.45am-12.15pm	Chapman Building, Lecture Theatre 6	Peel Park
Students' Union stand	Love your time at Salford - get involved! Discover the many ways to join in; from Student Reps, campaigns, sport, activity groups, socials and events - the Union is here to help you settle in and make the most of your free time.	11am-2pm	The Library Hub, Clifford Whitworth Library	Peel Park
Mature Students Society stand	Chat to our Mature Students Society about how they provide a supportive and fun environment for (not so) Mature Students on campus. They will provide information on their wide range of events, as well as how you can get involved with this fun and diverse community. If you are over age 21 when starting your studies, this society is for you!	10am-4pm	Allerton Building, ground floor	Frederick Road

We're working around the clock to make sure you love your time at Salford. Providing everything from the Advice Centre to Sports Clubs and Societies, right through to amazing food, drink and incredible events in the heart of campus, at Atmosphere kitchen and bar. The USSU is run by students, for students, representing you during your time at University – so be sure to visit to make sure your time at Salford is truly unforgettable. We're available throughout the event today so come along and ask us any questions to find out more.

Check us out at salfordstudents.com
Follow us to find out what you can expect:

   @salfordSU

Come and visit us at the Open Day to make sure your time at Salford is truly unforgettable!



DISCOVER OUR
STUDENTS' UNION

FOOD AND DRINK

There are a wide range of outlets available for food and drink at the Open Day today to suit all tastes.

OPENING TIMES

PEEL PARK CAMPUS		MAP KEY
8.30am-2.30pm	Maxwell Restaurant	(A)
9am-4pm	Maxwell Shop	(A)
11.30am-3pm	Maxwell Subway	(A)
9am-4pm	New Adelphi Café	(B)
9am-4pm	Campus Convenience Store	(C)
10am-2pm	Library Café	(D)
11.30am-3pm	Chapman Tortilla	(E)
11am-2pm	SALFOOD trailer	(F)
9am-5pm	The Old Fire Station Brewery and Café	(G)
11.30am-4pm	Salford Museum and Art Gallery	
FREDERICK ROAD CAMPUS		
11am-2.30pm	Allerton Restaurant	(H)
9am-4pm	Allerton Starbucks	(H)
10am-3pm	Student Shop	(H)
MEDIACITY CAMPUS		
8.30am-4pm	MediaCity Café	(I)

MAKE YOURSELF AT HOME

Living in student accommodation is a great way to really immerse yourself in student life whilst giving you the peace of mind of having everything you need within easy reach. All accommodation at the University of Salford Student Village is owned and managed by a specialist student accommodation provider called Campus Living Villages. Prices start from as little as £104.50* per week and all your utilities (water, electricity), contents insurance, 24/7 security, use of all on-site facilities (e.g. gyms at both sites and social areas) and high-speed WiFi are included in your rent.

PEEL PARK QUARTER

Peel Park Quarter is our thriving student village at the heart of our Peel Park campus, offering you affordable luxury in a safe and secure environment. You'll be a stone's throw from learning spaces, the library, Students' Union and campus shop. All rooms come with an en-suite, desk, chair, and small double bed with under-bed storage.



Wifi



Utility bills



Gym



Paid on-site parking



Social spaces



Laundry room



Cinema room



Security and CCTV



Cycle storage



Contents insurance



Multi-faith room



Peel Park Quarter is one of the most picturesque campuses of any university I've ever visited - the modern facilities, green spaces and spacious communal areas make it the perfect place to relax, socialise... oh, and study!

CAMERON

Civil Engineering student

JOHN LESTER AND

EDDIE COLMAN COURTS

John Lester and Eddie Colman Courts are perfect if you're studying a nursing or health related course, as they're located next to our Frederick Road campus. It's also just a short walk from Peel Park, and a short free bus ride to MediaCity. All rooms come with a bed (single or double, depending on the room), wardrobe, desk, chair and storage heater, with a shared bathroom and a good-sized kitchen.

Peel Park Quarter and John Lester and Eddie Colman Courts contain specially adapted rooms for those who have additional needs as well as the option of a carer room (for physically non-independent students) in our Peel Park Quarter accommodation.

For more information about living in University accommodation, visit salfordstudentvillage.com. Prices start from £125* per week for John Lester and Eddie Colman accommodation and from £148.24* for Peel Park Quarter accommodation. Peel Park Quarter is reserved for new first year undergraduate students only.



Wifi



Utility bills



Gym (24 hours)



Parking



Social spaces



Basketball court



Security and CCTV



Contents insurance



Laundry room



Cycle storage

PRIVATE

ACCOMMODATION

If you decide to live off campus, we recommend you use Manchester Student Homes to find a good quality student home. All their landlords are accredited, and they can support you should you have any problems with your accommodation. For further details please visit manchesterstudenthomes.com

You can find out more about our accommodation at one of our Open Day drop-in sessions.

See page 32 for details.



* Rates displayed are for the 2023/24 academic year and can vary depending on room type and tenancy length. Please check the website for the latest details.

COMMUTING FROM HOME

You can easily reach our three campuses via public transport. If you're planning to commute from home, take a look at some of the easiest ways to get to us from around Greater Manchester or plan your journey at

tfgm.com/plan-a-journey

ALTRINCHAM

Route:

Take the tram towards Manchester Piccadilly or Bury and change at Cornbrook for a tram heading to MediaCity

Journey:

40 minutes



TRAM

BOLTON

Route:

- ✓ Direct train service to Salford Crescent
- ✓ Up to four trains an hour

Journey:

15 minutes

TRAIN

STOCKPORT

Route:

Jump on the train to Manchester Piccadilly and change there for the 10-minute train ride to Salford Crescent station.

Journey:

45 minutes

TRAIN

TAMESIDE

Route:

Catch the 219 bus to Manchester Piccadilly and then take the 36 towards Bolton. Disembark at our Peel Park and Frederick Road campuses

Journey:

55 minutes

BUS

BURY

Route:

Catch the tram towards Manchester Piccadilly or Altrincham and change at Market Street for the MediaCity service

Journey:

1 hour 5 minutes

TRAM

WIGAN

Route:

- ✓ Direct train service to Salford Crescent
- ✓ Up to three trains an hour

Journey:

36 minutes

TRAIN



Buy a single ticket for £2 or an AnyBus day saver ticket for £5 to use across Greater Manchester

ROCHDALE

Route:

- ✓ Direct train service to Salford Crescent
- ✓ Up to three trains an hour

Journey:

25 minutes

TRAIN

OLDHAM

Route:

Take the 83 bus to Manchester Piccadilly then the 36 bus towards Bolton. Disembark at our Peel Park and Frederick Road campuses

Journey:

1 hour

BUS



TRAFFORD

Route:

Catch the X50 bus towards Manchester Piccadilly and disembark at the Imperial War Museum North for our MediaCity campus

Journey:

6 minutes

BUS

Purchase a 1-day anytime travelcard for £7.10 for use throughout all tram zones

(All transport routes, journey times and travel costs correct at the time of print May 2023).

We are just over a mile away from Manchester city centre; that's just a 20-minute walk or five-minute journey if you hop on one of the many buses which run every few minutes. If you're travelling by train, Salford Crescent is perfectly placed with four trains to Manchester Piccadilly every hour.

If you are travelling to our MediaCity campus, you can show your student ID card on the number 50 bus to ride for free from our Peel Park or Frederick Road campuses. Alternatively, if you're commuting in by tram, there's a Metrolink stop right outside our MediaCity campus.

If you're coming in by bike or car, we have over 400 spaces for bicycles and over 1,000 car parking spaces across our campuses. Annual and monthly parking permits are available to buy, or you can simply pay as you go.

COMMON ROOMS

On campus we have loads of chill-out spaces and comfortable seating zones for our commuting students.

Our common rooms have everything you need to pass the time between lectures with solo and group study spaces, a lounge area with TV, a kitchenette with microwaves and fridges, gender-neutral accessible toilets, lockers, charging points and even a pool table.



Find out more about commuting to Salford at salford.ac.uk/commuting

! ANY QUESTIONS, JUST ASK

askUS is your one-stop-shop for all student enquiries. We are your dedicated specialist support service, your go-to people for when you're not sure where to start and your first port of call when you need to talk to someone. We're here to help you be successful at university and maximise your potential.

Find out more about all our support services at salford.ac.uk/student-support-services

Our askUS staff can give you the right advice when you need it most, whether you have a question about finance, wellbeing, faith or visas and immigration or if you need support with your studies, your career or a disability.

At our Open Day you can attend one of our talks to find out more about Finance and Student Support, or drop in at any time to chat to the team about a range of support services.

Our Disability and Wellbeing team are offering one-to-one sessions throughout the day so you can find out more about support available at Salford.





CAREERS SUPPORT AT SALFORD

In today's competitive job market, it's important to stand out. Employability skills - sometimes called 'soft skills' or 'transferable skills' - can help you do that.

Our Careers and Enterprise team is here to help you make the most of your skills and experience, preparing you for the next stage of your career. They provide information, advice and support to help students further their career options and enhance their employability.

THE TEAM'S SERVICES INCLUDE:

- / Career advice
- / Enterprise training
- / 1-to-1 support sessions
- / Finding a job

Our support doesn't stop when you graduate either, as a member of our Salford alumni community, you'll have access to our careers service for life.

EMPLOYER ENGAGEMENT

Throughout your studies, you will have the opportunity to meet with employers to build relationships, be inspired and learn about their employment opportunities.

- / Careers fairs
- / Access to jobs
- / Summer placements
- / Volunteering opportunities

To learn more about the employability enhancing opportunities available to you at Salford, visit our careers website at salford.ac.uk/careers

A TALE OF TWO CITIES

The City of Salford is in the heart of Greater Manchester, with our Peel Park campus just 2km from Manchester city centre, so you'll be just a short walk from world-class music, sport, nightlife, food, shopping and culture.

We've got a lot to boast about, so here's a quick overview of why we love Salford and our sister city of Manchester...

CULTURE

The Lowry Theatre, named after the Salford artist LS Lowry and located at Salford Quays, hosts plays, comedy shows, dance performances, family activities and gallery exhibitions – right on our doorstep next to MediaCity.

Islington Mill, just a ten minute walk from Peel Park campus, is home to radical, subversive music and visual arts, with an eclectic mix of events and exhibitions to inspire and surprise you.

HOME, located in central Manchester is more than a cinema: it's Manchester's centre for international contemporary art, theatre and film, complete with a bar and restaurant. We're proud to be founding partners of HOME, which opens up opportunities for students such as gaining direct industry involvement in the curriculum on relevant courses.

Want to enjoy your culture even closer to home? Our campus is home to New Adelphi Theatre, a 350-seat theatre which hosts a range of events, from side-splitting comedy to ground breaking dance projects and big band entertainment, involving both our own students and external companies.



FOOD AND

DRINK

We admit it, we're a bunch of foodies here – but you can find a lot more than avocado toast at one of the nearby many food and drink establishments.

Salford's Chapel Street, just a few minutes' walk from main campus, is home to a growing number of independent outlets including veggie favourite Deli Lama, authentic Italian pizza at Vero Moderno, freshly made tapas at Porta and beautiful cakes and artwork at GK Gallery.

In Manchester's Northern Quarter it's all about quirky diners, canteens and cafes, whilst the city's Chinatown is the second biggest in the UK, with a host of Chinese, Korean and Japanese restaurants, as well as a number of speciality supermarkets. Just outside of the city centre you'll find Rusholme's famous 'curry mile' offering Indian, South East Asian and Middle Eastern cuisine.

MUSIC

The Manchester music scene is more than Morrissey and Madchester (although Bez does still make an appearance now and again). Whatever your music taste, you'll never be stuck for gigs in the city.

Catch the biggest national and international acts at Manchester Arena, the Apollo and Manchester Academy, and see your favourite indie and underground artists at Northern Quarter venues Night and Day and Soup Kitchen. Manchester's alternative music scene still roars, with gigs at Rebellion, the Star and Garter and DIY venue Partisan.

The University itself has been host to a range of great artists over the years as well, from The Who in 1968 and Status Quo in 1972, to The Smiths in 1986 and Pulp in 1992. We're currently making plans to re-develop Maxwell Hall so it can play host once more to the stars of the future!

SPORT

We're home to two of the biggest teams in football, Manchester United and Manchester City (the Students' Union offers discounted tickets to some matches!) as well as Lancashire County Cricket Club at Emirates Old Trafford. Sportcity at the Etihad Campus houses the National Cycling Centre and Velodrome, the National Squash Centre and regional Tennis Centre.

If you like your sports a little less theatre of dreams and a little more grassroots, Manchester and Salford are also home to a community of active and enthusiastic non-league football teams, as well as rugby, hockey and roller derby teams. You can even try your hand at outdoor swimming at Salford Quays, next to our MediaCity campus.

On campus itself we have the Sports Centre, where facilities include a 25 metre swimming pool with spa and sauna, a fitness studio with strength and conditioning rooms, and multi-use sports hall for badminton, basketball, netball and five-a-side-football.

SHOPPING

Ever wonder where Mancunians get their unique street style? The Northern Quarter is home to the best independent, vintage and boutique shops, as well as Afflecks Palace, with four floors of alternative fashion. You can find all your high street favourites in Manchester Ardale centre, and designer labels in the city centre.

HOW TO GET THE BEST OUT OF FOLLOWING US

So far, the University is looking pretty good right? Shiny buildings, amazing location, the lot.

But don't just take our word for it! What you want to know is what it's really like to study at Salford, from the students who are doing it right now.

That's where your favourite social media platform comes in. We regularly hand over our social accounts to our students so they can give you a glimpse into their day to day life - helping you make that big decision about where to study.

STUDENT SUPPORTERS

As a parent, carer, or supporter, we understand there's lots of information to take in while helping your child choose the right institution - so we want to make it easier for you. Sign up for our Student Supporters newsletter at salford.ac.uk/parents to receive invitations to supporter-specific events and important UCAS information at key points in the year.



@salforduni

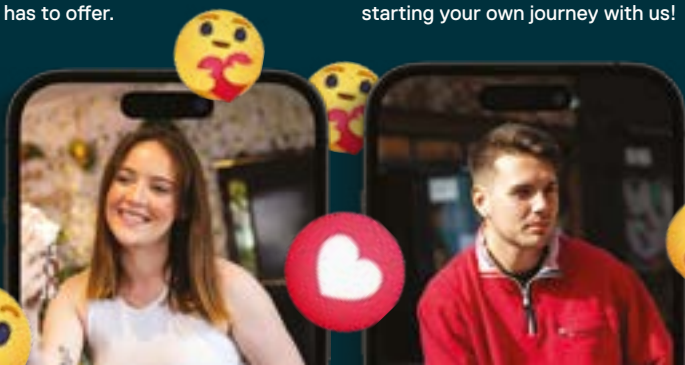
MEET THE TEAM

“

Hi! I'm Niamh, a third-year Broadcast Journalism student and Student Social Media Content Creator here at Salford. I'm here to tell you all about the amazing experiences and opportunities you can take advantage of at university, including making lasting friendships and exploring a great city location. Keep up to date with our social media platforms to find out what being a Salford student has to offer.

“

Hi, I'm Sam, a third-year Film Production student. I've lived in Manchester my whole life and love the culture and links to industry here at the University of Salford. I work as a Student Social Media Content Creator within the University. I'll be creating content that offers you an insight into the University and life as a student. Feel free to drop us a message with any questions you have about starting your own journey with us!



1

VISIT THE MADE IN SALFORD BLOG

With posts on everything from organising your study schedule to organising your social life, this is your go-to guide for settling in to university life. See blogs.salford.ac.uk/made-in-salford

HACK: You're going to want to test out our recommendations for the best place to get pizza!



2

JOIN OUR EXCLUSIVE FACEBOOK GROUP

With more than 2,500 students joining the group each year, you don't want to be left outside. This is your opportunity to chat to potential coursemates, and flatmates well before you arrive on campus. Join the group now at: facebook.com/groups/salfordstudents2024



3

ALWAYS ASK FOR HELP

The Social Media team are online to answer your questions between 9am and 5pm, Monday to Friday. We'll aim to get back to you within 48 hours, usually on the same day.

HACK: Remember to look out for our Instagram live streams when you can get instant responses from students and staff.



4

SOAK UP CAMPUS VIBES

Green space? Check. Waterfront? Got it. Big city life? Just down the road. From our Peel Park to MediaCity campus, we really do have the best of both worlds at Salford, and we show it all off through campus tours, Insta-worthy pics, Reels, TikToks and more on our social channels. Be sure to follow to get a glimpse of where you could be studying.

HACK: Our TikTok is where we let our humour shine. Follow us for a giggle!



5

GET INVOLVED

Remember that you can get involved in our social media by interacting with our lives and student takeovers. Let us know how you are getting prepared for university by using #SalfordUni in your Open Day, application process and packing photos and videos.

HACK: Keep an eye out for competitions and giveaways – you could just win a cheeky gift voucher!



ARNDAL SHOPPING CENTRE
NORTHERN QUARTER
NATIONAL FOOTBALL MUSEUM
AO ARENA MANCHESTER
PRINTWORKS
MANCHESTER PICCADILLY
MANCHESTER TOWN HALL

BEETHAM TOWER
DEANS GATE
SPINNINGFIELDS
CASTLEFIELD

MANCHESTER

PEEL PARK
PEEL PARK QUARTER
UNIVERSITY OF SALFORD STUDENTS' UNION
SPORTS CENTRE
UNIVERSITY HOUSE
SEE BUILDING
CLIFFORD WHITWORTH LIBRARY
LADY HALE BUILDING
CHAPMAN BUILDING
FAITH CENTRE
ALLERTON BUILDING
MAXWELL BUILDING
PEEL BUILDING
NEWTON BUILDING
NEW ADELPHI BUILDING
MARY SEACOLE BUILDING
SALFORD CRESCENT TRAIN STATION
BRIAN BLATCHFORD BUILDING

SALFORD

JOHN LESTER AND EDDIE COLMAN COURTS



University of
Salford
MANCHESTER




WORLD
LAND
TRUST™

www.carbonbalancedprinter.com

Registration No. 2225

salford.ac.uk

 [@SalfordUni](https://www.instagram.com/SalfordUni)

 [/salforduni](https://www.facebook.com/salforduni)

 [@SalfordUni](https://www.twitter.com/SalfordUni)

 [Search Salford University](https://www.youtube.com/SalfordUniversity)

 [salforduni](https://www.soundcloud.com/salforduni)

Course Enquiries Service
T: 0161 295 4545
E: enquiries@salford.ac.uk