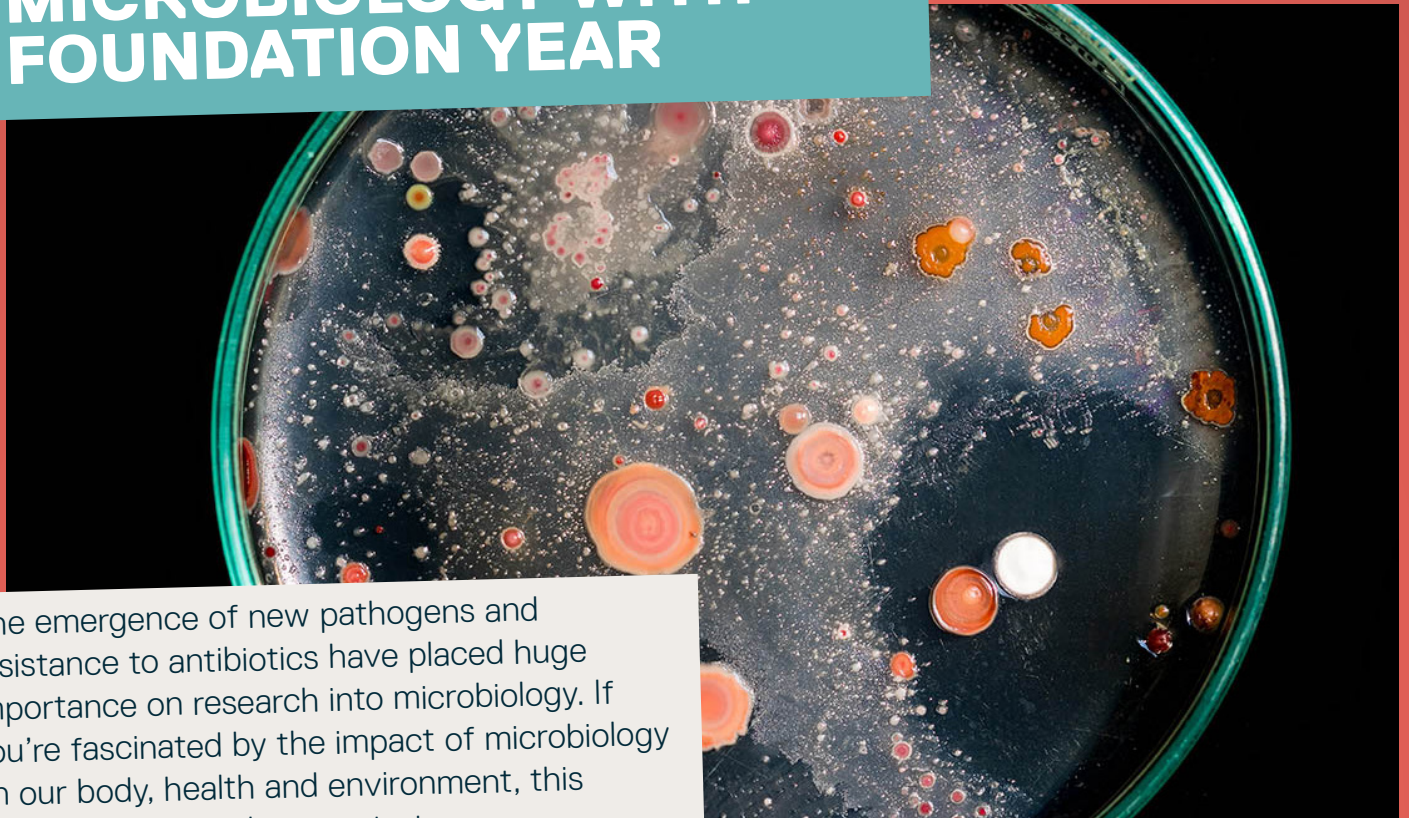


BSc (Hons)



University of  
**Salford**  
MANCHESTER

# MICROBIOLOGY WITH FOUNDATION YEAR



The emergence of new pathogens and resistance to antibiotics have placed huge importance on research into microbiology. If you're fascinated by the impact of microbiology on our body, health and environment, this degree is a great place to start.

The foundation year pathway is ideal if you want to develop your career, but don't meet the criteria for direct entry to an honours degree or have the appropriate background knowledge. They are also recommended if you are returning to education, or if you wish to change career direction.

The entry requirement for this degree is 64 UCAS points and GCSE Maths / English at Grade C / Level 4.

## FOUNDATION YEAR PATHWAY

During the foundation year, you will be introduced to key concepts, theories and principles. Strong emphasis is placed on the development of relevant study and transferable skills, with a responsible approach to learning through a set of carefully designed modules. On successful completion, you can join the full three-year degree course.

## REAL-WORLD ISSUES

With a focus on real-world applications, this course will guide you as explore microbiology in a broad

sense, with a view on long-term relevance to drug development and its relevance to sustainable food sources and fuel production.

You will explore the fundamentals of biology and microbiology through the study of cell biology, molecules and microbes. Later in your studies, you will build specialised knowledge in medical and public health and microbial biotechnology.

## RESEARCH-INFORMED TEACHING

This programme is delivered by research-active staff with expertise in a wide range of specialisms, including heart and lung disease, cancer biology, drug development and infectious diseases.

All teaching activities integrate directly with industry, ready for you to start your career in microbiology. During your studies, you will have access to our state-of-the-art Bodmer laboratories, using industry-standard equipment and developing advanced techniques used in professional laboratories.