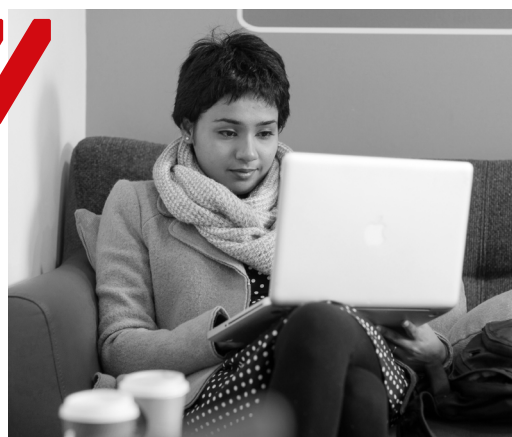




MSc/PgDip/PgCert **PUBLIC HEALTH**



COURSE SUMMARY

On this course, you'll receive instruction in core public health skills including epidemiology, statistics and research methods. You will also get the opportunity to gain in-depth knowledge of a range of topics such as evidence-based public health, and 21st Century Global Public Health Challenges.

This course aligns to the ten key competencies of the UK Faculty of Public Health Curriculum. In this regard, the course will equip you with the core skills you'll need to effectively interpret and understand key areas of health research and how this can be used to inform and drive policy. You'll also learn how to use this insight to inform and drive public health.

During your time with us, you can tap into the expertise and skills of our partners, who include external public health practitioners and research staff from across the University.

COURSE CONTENT

During the first and second semesters of your studies you will undertake modules including Epidemiology and Statistics for Public Health, Evidence-Based Public Health, Research Methods Applied to Public Health and 21st Century Global Public Health Challenges. You will develop the capability to thoroughly and critically assess health status, health needs and analyse the biopsychosocial factors that determine a person's health.

For your third semester, following your research proposal you will have the opportunity to complete a dissertation based on an applied project with one of our public health partners or a dissertation topic of your choice.

CAREER PROSPECTS

You'll be well placed to apply for public health roles in the UK or abroad in local or national government health departments. The range of jobs can include health promotion, health policy development, research or health advocacy. Full-time students on this course can apply for student membership with The Royal Society of Public Health.



IN BRIEF

- The School is an institutional member of the Association of Schools of Public Health in the European Region (ASPHER).
- Learn the skills which match the Public Health Skills and Knowledge Framework (2016)
- Develop a multidisciplinary, evidence-based approach to public health
- Two or three year part time study for MSc
- International students can apply



LOCATION:	Frederick Road Campus
DURATION:	MSc: One year full time; two or three years part time PgDip: Eight months full time; two years part time PgCert: Eight months part time
START DATE:	September
TYPICAL ENTRY:	An honours degree – normally 2:2 or above, preferably in a health related subject or an equivalent academic or professional qualification. We welcome applications from students who may not meet traditional entry criteria but who have relevant experience and the ability to pursue the course successfully. International students must provide evidence of proficiency in English - IELTS 6.5 band score or above. If your current English language qualification is below this level, you may be able to take a pre-sessional English courses.
ASSESSMENT:	Written assessments, examinations, project reports, presentations, research project/dissertation.
DELIVERY:	A combination of teaching and learning strategies will be used throughout the course. These include lectures, case studies, individual and group work, student led presentations and seminars.