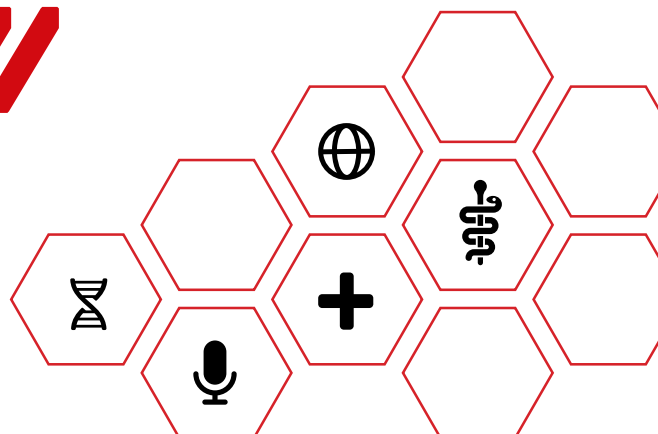




MSc **DIGITAL HEALTH**



COURSE SUMMARY

Digital Health is one of the fastest growing economic sectors worldwide. It combines the use of information and communication technologies to improve health and wellbeing. This course will provide you with the knowledge and skills to critically analyse and creatively respond to a world that has undergone and is still undergoing digital transformation.

Drawing on theoretical models and practical application, you will gain the skills necessary to support organisations in different stages of their digital transformation, including processes, devices, users strategy and service integration. You will benefit from Salford's specialist expertise on digital health, Internet studies, and digital research methods to provide the theoretical, practical and methodological skills needed to analyse and address key challenges of digital health.

Guest speakers from academia; service users, who are experts in using digital technologies to self-care; and public-sector organisations will also provide you with a range of insights into key issues and real-world applications in the digital health sector and other sectors where the digital plays a key role.

This course will give you the opportunity to undertake a digital project, either via a work placement or dissertation, and you will learn how to share research with broader communities and publics.

COURSE CONTENT

During the course, you will study modules such as Understanding Digital Health: people, systems and processes, Trending Topics in the Digital, Digital Research Methods, Digital Criminal Justice, and Psychology of Digital Experiences. You will also complete a dissertation project in which you investigate a key issue in digital health, or complete a digital work placement.

CAREER PROSPECTS

On this course you will learn to develop a specialist understanding of contemporary developments in digital health. You will also acquire the skills to investigate and analyse digital technologies, and develop competencies required for progression to leadership roles, service development, policy development and patient and public involvement.



IN BRIEF

- Develop highly valuable skills in digital research, digital communication, digital engagement, digital evaluation and project management.
- Gain knowledge and understanding of current and emerging approaches, concepts and issues in the digital health, including devices, processes, users strategy and service integration
- International students can apply
- Part-time study available



LOCATION:	Frederick Road Campus
DURATION:	1 year – Full-Time 2 years – Part-Time
START DATE:	September
TYPICAL ENTRY:	You need an undergraduate degree with a minimum 2:2 classification, or an equivalent qualification. You will also be considered if you have relevant experience. We welcome applications from students who may not have formal / traditional entry criteria but who have relevant experience or the ability to pursue the course successfully. The Accreditation of Prior Learning (APL) process could help you make your work and experience count
ASSESSMENT:	Digital essays, portfolios and blogs, group projects and presentations, and a dissertation or work placement
DELIVERY:	Lectures, seminars, guest lectures, podcasts, practical workshops, tutorials, situated learning and independent learning