

Connecting a Mac OS X device to the UoS-WiFi Service

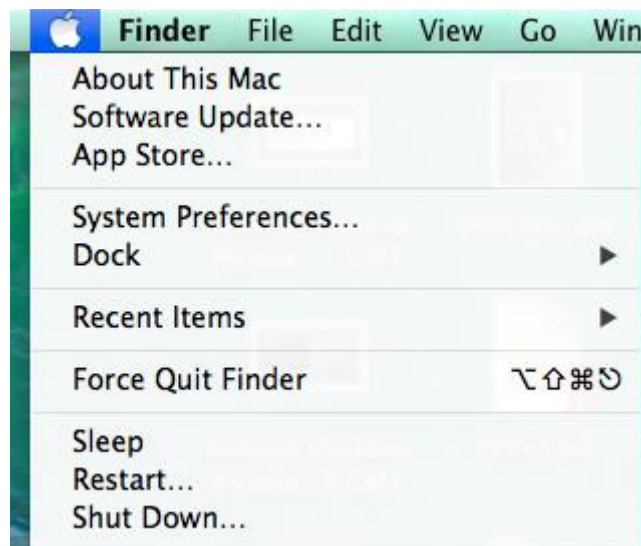
Connecting a Mac OS X device to the UoS-WiFi Service

The University of Salford has added a seamless way to connect your devices to the wireless network available on campus; this user guide will provide instructions on how to connect a Mac OS X device using this method, which will allow your device to seamlessly authenticate whenever it is in range of the wireless service on campus, avoiding the need to constantly enter your username and password into a webpage.

Please Note: Mac OS versions may vary – These instructions have been made using Mavericks (10.9)

Connecting to the UoS-WiFi service:

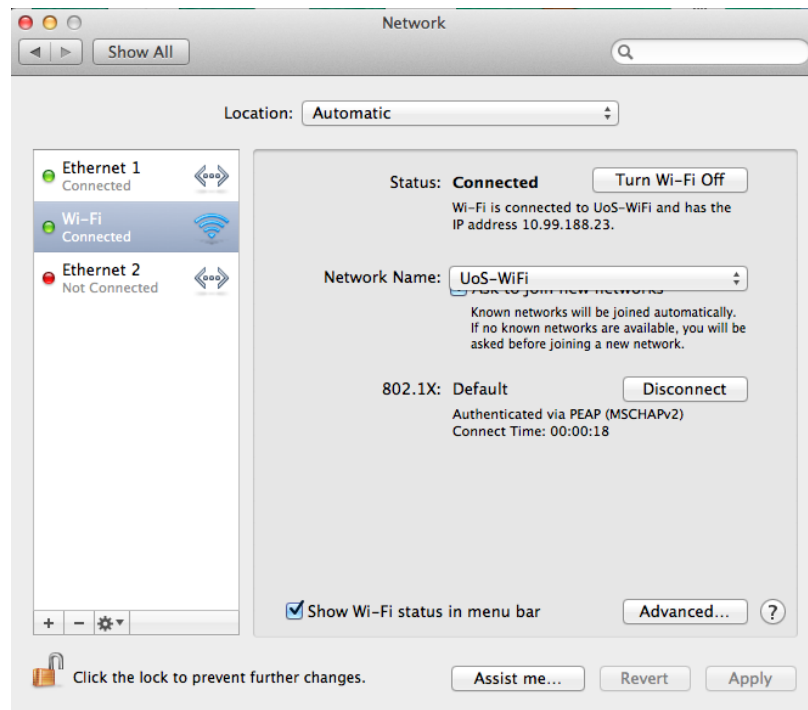
- From your Desktop click the **Apple Icon**  and navigate to **System Preferences...**



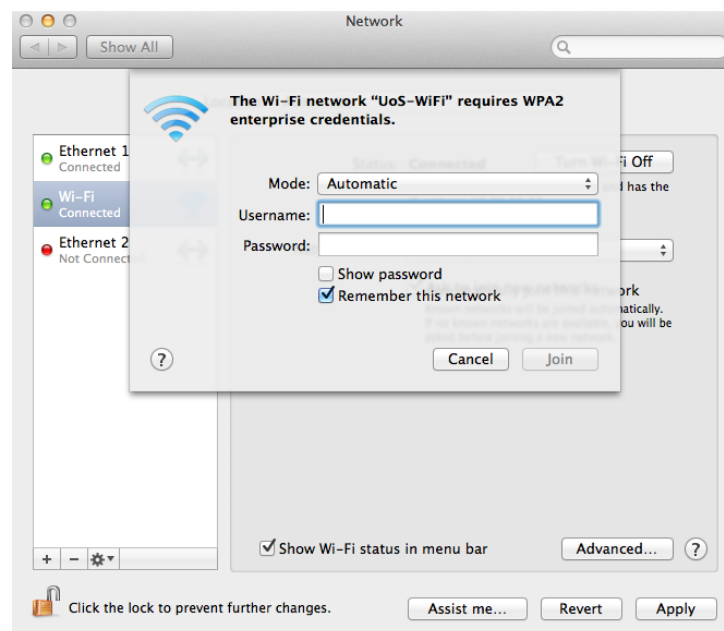
- In the system preferences option window click the **Network Icon** 



- From the list of available network options in the left hand pane, highlight **Wi-Fi**, then within the Wi-Fi options window choose the network **UoS-WiFi** from the drop down list next to **Network Name**:



- Another box will pop up asking for your **user credentials**. Leave the mode as Automatic and enter your **UoS Username and Password** in the relevant boxes. Tick **Remember this network**:



- Click **Join**. You are now connected to the UoS-WiFi wireless service.