

## Spyware – removing spyware from your PC using Spybot

Spyware is programming that is put in someone's computer to secretly gather information about the user and relay it to advertisers or other interested parties. When you use the internet or install new programmes on your PC, spyware can be put on your PC without you knowing. *Spybot* is a useful programme to run on your PC to remove any traces of spyware.

### Downloading Spybot

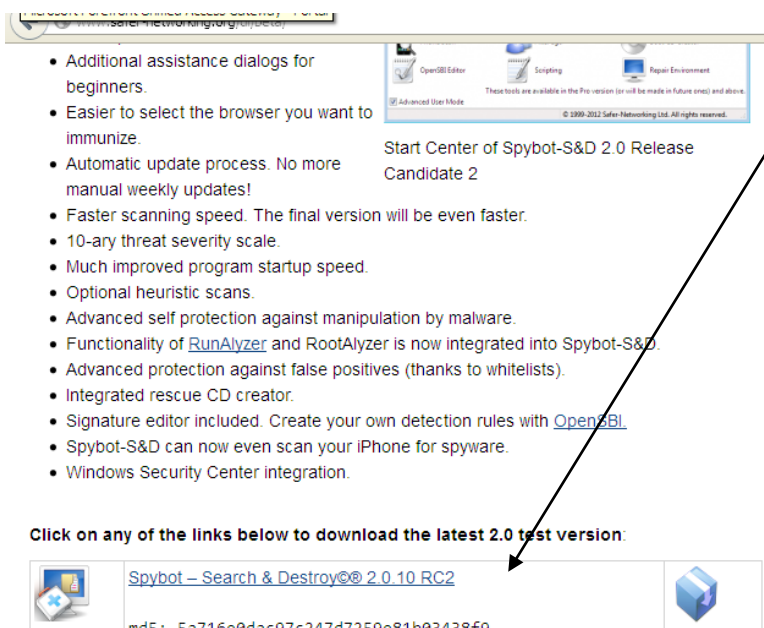
Please note that the following instructions for downloading Spybot assume that you are using Internet Explorer; other web browsers may behave slightly differently.

- Visit [www.safer-networking.org/en/download/index.html](http://www.safer-networking.org/en/download/index.html)



Click on this link to download SPYBOT

- This will take you to the next page where you will then need to Scroll down the page until you reach *Spybot Search & Destroy 2.0.10 RC2*, as shown below:



Click on any of the links to download

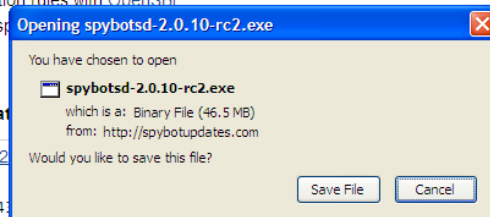
- Once you have clicked on the Download link a box like the one below will appear on screen. If it doesn't, you may need to click on another Download link on the page. You should then see the File Download box on screen.

ns.  
 ion against manipulation by malware.  
 lyzer and RootAlyzer is now integrated into Spybot-S&D.  
 against false positives (thanks to whitelists).  
 creator.  
 ded. Create your own detection rules with OpenSBI.  
 even scan your iPhone for spyware.  
 nter integration.

below to download the latest

rch & Destroy@@ 2.0.10 RC2

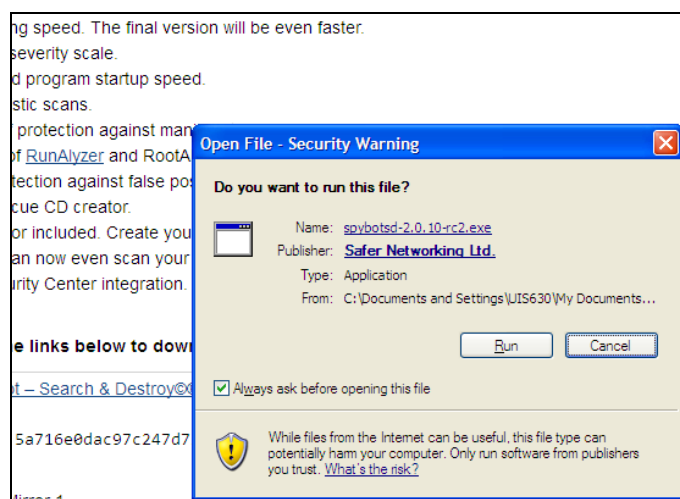
:0dac97c247d7259e81b034



- Click on **Save File**.
- You will then have to choose where to download the file on your PC. We recommend that you save this to an area you will find easy to locate; either on your own filestore or somewhere on your C: drive.
- When the file has finished downloading you will get the option to open the folder at its stored location. Open the folder to see the program listed.

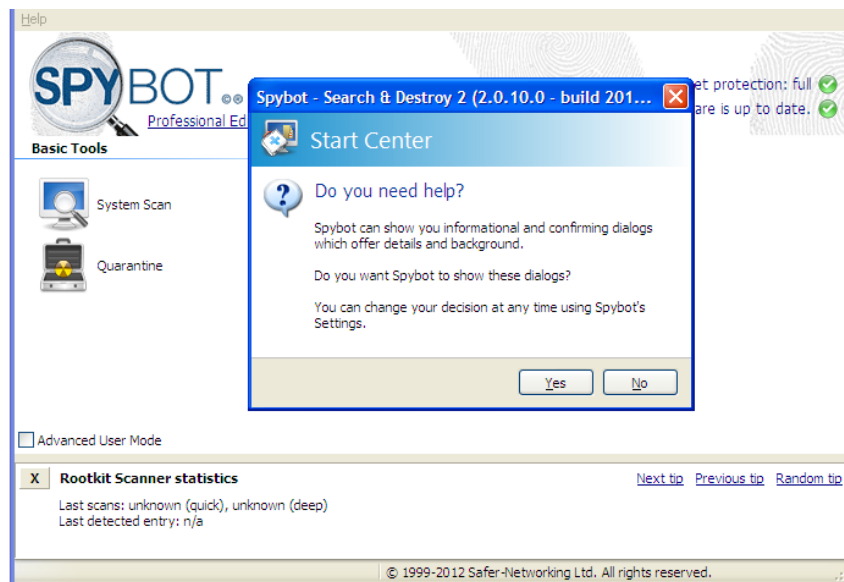
## Installing Spybot

- click on **Run** to install.



- Choose the language required, e.g. English.
- Run through the setup wizard.
  - Accept the licence agreement.
  - Accept the default location the programme will install to.

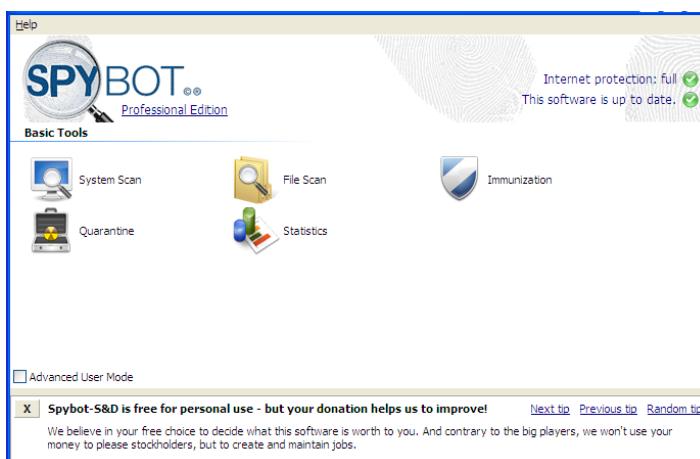
- Choose a full installation.
- Accept default shortcut for **Start Menu**.
- Additional Tasks: ensure **Use Internet Explorer protection (SD Helper)** is selected, if you wish to add icons to your desktop tick the relevant boxes.
- Review your selections, if everything is correct, click on **Finish**.
- The following page will then appear

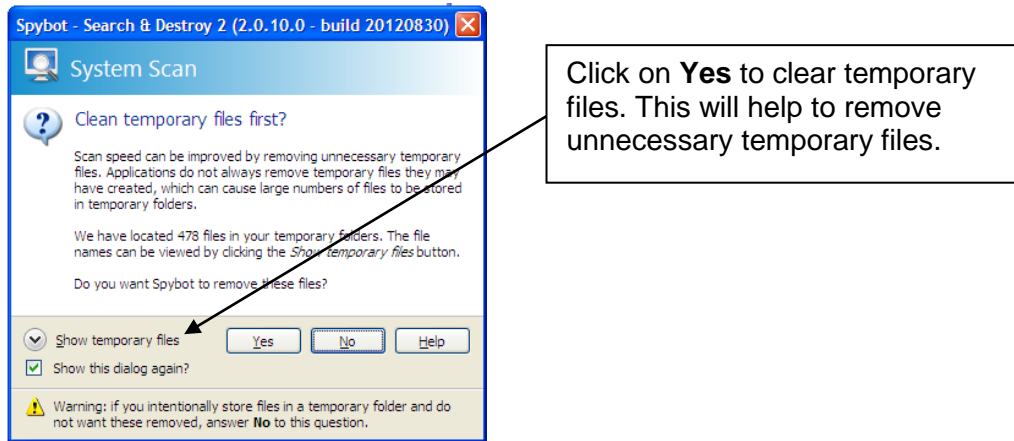


- The help box will appear above, if you require further assistance. Click **Yes**.

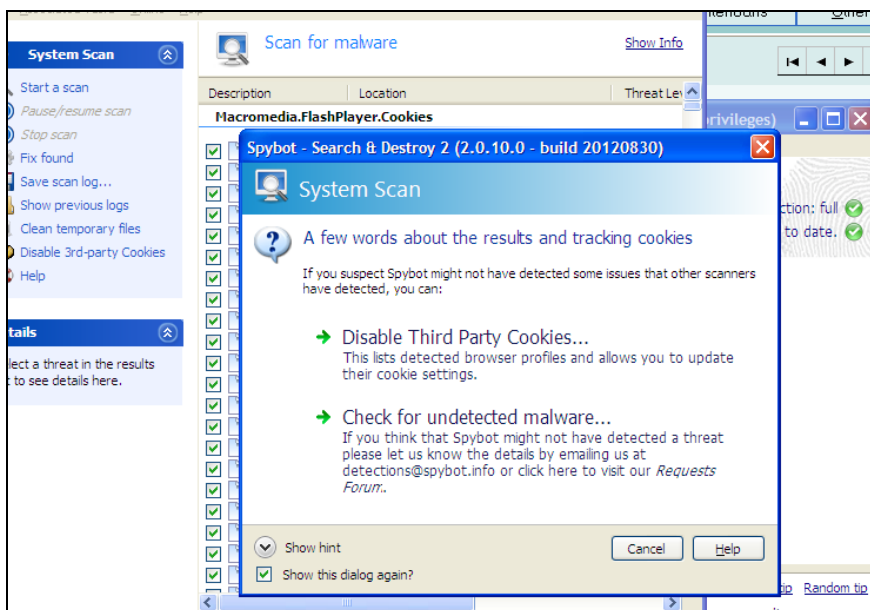
## Using Spybot

- We recommend that you run *Spybot* on a weekly basis.
- Run the program and select **System Scan**





- SPYBOT will then scan your system.



- Where problems are not fixed automatically, the problems will be shown. You
- For 'You are about to remove the checked entries...', choose **Yes** to continue.

### Assistance required?

If you need any further help please contact the ITS Service Desk on 0161 295 2444 or email [www.its.salford.ac.uk/students/](http://www.its.salford.ac.uk/students/)

Please note: The information contained in this Computing guide was correct at the time of publication. A more recent version may be available on The Library's website at [www.salford.ac.uk/library/guides](http://www.salford.ac.uk/library/guides)