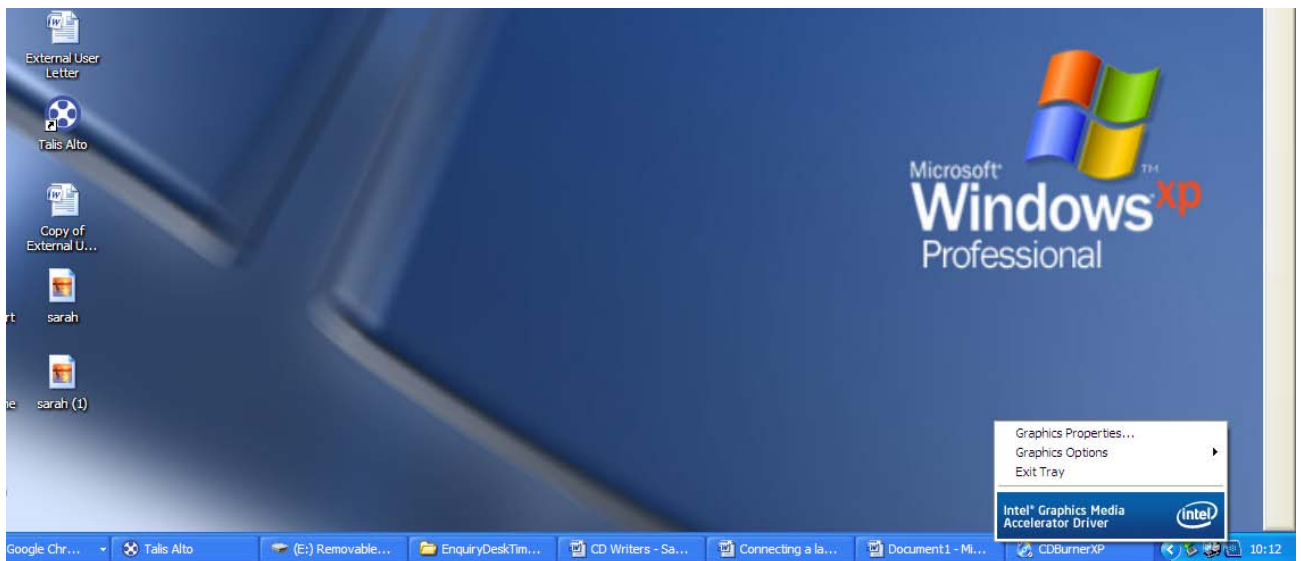


## Connecting a laptop to an external monitor

You may use the monitors available in the library to enhance your study experience. Collect a monitor cable pack from the Enquiry Desk and follow the instructions below.

### Connection instructions

- Insert one end of the monitor cable into the laptop port
- Insert the other end of the monitor cable into the VGA port on the back of the monitor
- Locate the Intel Graphics Media Accelerator Driver for Mobile (As shown below)



- Select **Graphics Options > Output To > Intel® Dual Display Clone > Notebook + Monitor**