

# IMPACT



2021



University of  
**Salford**  
MANCHESTER

# CONTENTS

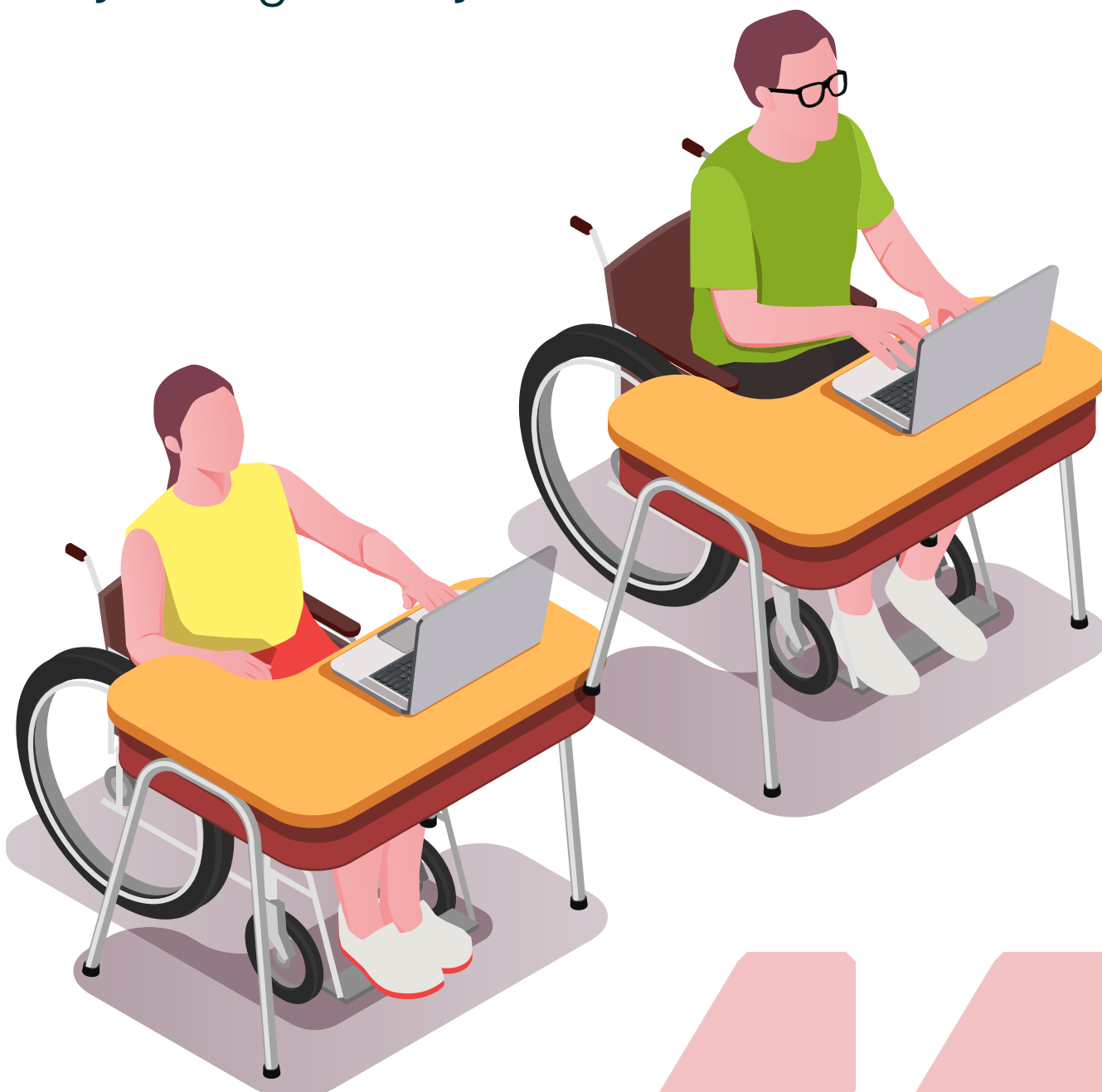
- 04** Introduction
- 07** Student Support
- 08** Health and Wellbeing
- 10** Diversity and Inclusion
- 11** Employability and Entrepreneurship
- 12** Testimonials





The University of Salford plays a significant role in driving social mobility across Salford and Greater Manchester, to help raise the aspirations of our students, alumni, and wider community.

As a civic university rooted in Salford, we are committed to improving access to higher education for students from disadvantaged and underrepresented backgrounds. We strongly believe in the power of education as a vehicle for social mobility and, as we face the impact of the Covid-19 pandemic on our communities, we understand the responsibility of this more than ever, which is why we signed up to the Social Mobility Pledge this year.



Social mobility isn't just about improving access to education. It is also ensuring that students leave university on a level playing field to their peers, with the resources to support personal progression, future employability, and the opportunity to realise their potential, regardless of their background. We are extremely proud of the range of scholarship programmes, campus initiatives, and industry collaborations we have on offer to enhance the experience of all within our University.

Underpinning everything we do is the incredible philanthropic support we receive from our alumni, industry partners, and charitable trusts and foundations. It is our donors that have been powering our work behind social mobility for years, and we would like to thank them for their remarkable loyalty.

On the following pages is a summary of some of the major areas of philanthropic impact over the 2020/21 academic year. To read more about our work, please visit:

**[salford.ac.uk/giving/impact](https://salford.ac.uk/giving/impact)**





# STUDENT SUPPORT

The pandemic has disproportionately affected families from low-income backgrounds, which represents 40% of our student body. We are proud to work alongside our donors to create several funding schemes that remove financial barriers and support students to realise their dreams:

- Over **50 Salford students and recent graduates** received financial aid from a donor-funded scholarship, bursary, or prize during the 2020/21 academic year.
- Our new **Revive Grants** will help to relieve the growing demand for financial and emotional support amongst our students by funding projects focused on areas such as mental health and employability.



# HEALTH AND WELLBEING

The global pandemic has highlighted the increasing demand for physical, mental, and emotional support across the UK. With the help of our donors, we have secured world-class equipment and created vital wellbeing initiatives, such as:

✓ A new **Mammography (breast screening) system**, thanks to a generous donation from the Garfield Weston Foundation. This piece of equipment will enable us to train the next generation of radiographers, carry out world-leading research, expand our industry partners, run outreach programmes, and apply to become a clinical provision for the local community.

✓ **Four campus initiatives** which focus on providing student support through the creation of mental health resources, resilience workshops, mentoring, and career guidance.



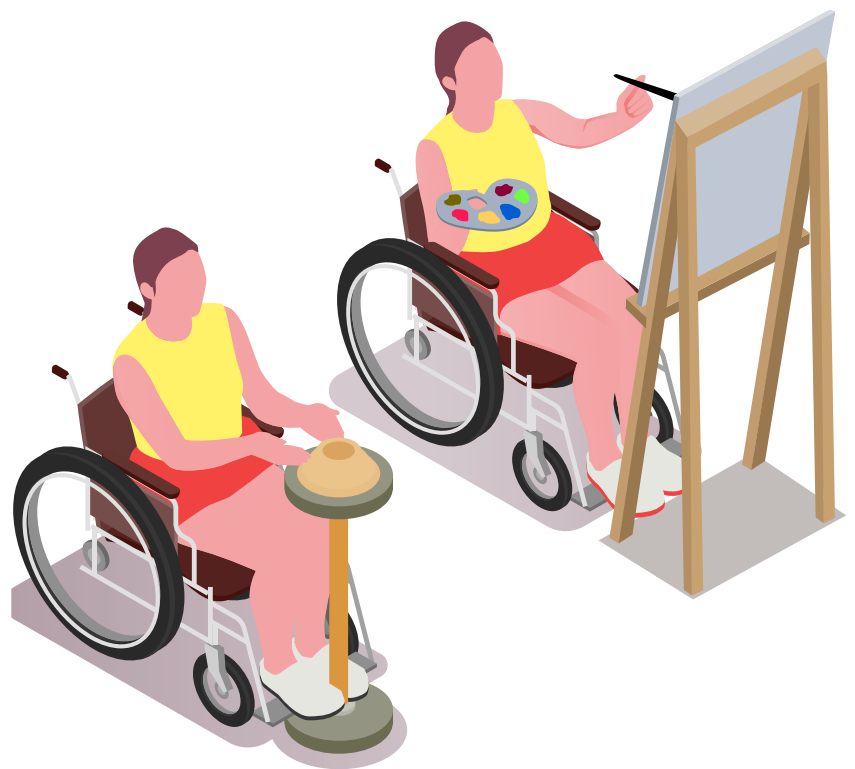




# DIVERSITY AND INCLUSION

We recognise that organisations across sectors have ambitious plans to diversify their workforce; as a talent provider, we are determined to do all we can to create equality of opportunity through a variety of innovative programmes:

- To improve diversity of talent within the STEM sector, **over 30 students from low-income or underrepresented backgrounds** completing a STEM-related degree received a donor-funded scholarship, bursary, or prize, with more secured for 2021/22 – a number of these were specifically targeted for females in STEM.
- **ELEVATE.** is a new industry partnership scholarship initiative that will nurture diverse talent looking to enter screen industry professions.



# EMPLOYABILITY AND ENTREPRENEURSHIP

Our relationship with industry partners provides extraordinary opportunities for our students through mentoring, work placements, scholarships, and more:

- ✓ Salford's Launch Incubator supported **51 student businesses and awarded £96,000** in cash grants to help develop student and graduate entrepreneurs.
- ✓ **Nine students** received funding to complete internships with start-ups and SMEs, thanks to our partnership with Santander Universities.



To discover how your support can make a big difference at the University of Salford, please visit: [salford.ac.uk/giving](https://salford.ac.uk/giving)

# TESTIMONIALS



*'Being the first to attend university from my family, the scholarship has given me the motivation and confidence to pursue my education. Additionally, being a woman in this field and receiving the support from a donor has shown me that a minority can achieve great things when supported.'*

**Aiysha**

**Gerry Mason Engineering Scholar**





*‘I would like to say a huge thank you to the donors that have made the scholarship possible. I hope you realise the huge impact you’re having on student lives – by investing in us you are giving us the confidence, opportunity and time to achieve our dreams.’*

**Joseph**  
**Graduate Performance Scholar**





*‘Thank you for the remarkable compassion and generosity you have shown in rewarding me this prize. It is an amazing incentive towards my education and a boost for a future that I would love to pursue.’*

**Minahal**  
**JS Engineering Scholar**





*‘Our collaboration with the University of Salford continues to strengthen, and we’re delighted to have facilitated the creation of the Morson Engine Room and the Maker Space.’*

*We’re also delighted to be continuing our support of the Gerry Mason Engineering Scholarship, which was founded in my late father’s name. It was his drive and ambition to engage with local young people and provide highly-skilled career pathways, regardless of socio-economic background, gender, race and more - a core value that still rings true within Morson today.’*

**Ged Mason OBE**  
**CEO of the Morson Group**



## Temporary Works forum

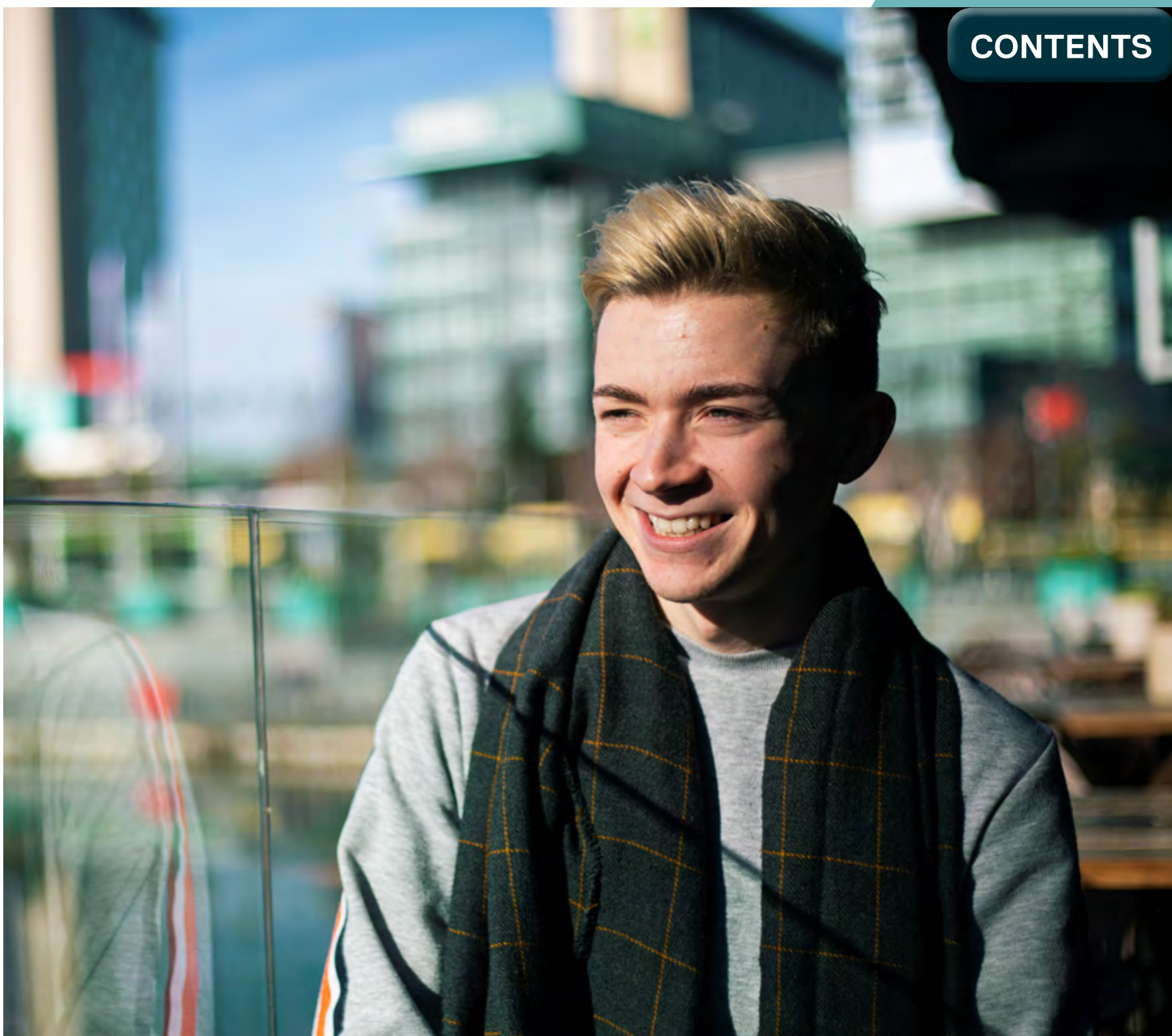
Promoting best practice in the construction industry.

*‘TWf is pleased to develop its link with the University of Salford and the three TWf scholars. In what has been a difficult year, it’s hoped that the interest in ‘temporary works’ research will develop. Also, that the students will grow in confidence and their interest in engineering strengthen.’*

**David Thomas**  
**Director and Secretary of the**  
**Temporary Works forum (TWf)**







To get in touch and learn more about our giving programmes, please contact the Alumni Engagement and Development team via post or email:

Humphrey Booth House  
The University of Salford  
The Crescent  
Salford  
M5 4PF



[supporters@salford.ac.uk](mailto:supporters@salford.ac.uk)

 @SalfordGiving

Find out more about philanthropy at Salford:  
[salford.ac.uk/giving/impact](https://salford.ac.uk/giving/impact)



University of  
**Salford**  
MANCHESTER