



University of
Salford
MANCHESTER

APPRENTICESHIPS

SCHOOL OF
HEALTH AND SOCIETY

Invest to empower your workforce

APPRENTICESHIPS

“Degree Apprenticeships have benefited our organisation by maximising the potential of our staff to be the best they can be. We have a good working partnership with Salford, with regular meetings and updates on progress of apprentices. The team at Salford are always willing to work to fit our needs.”

Annie Dixon
Clinical and Professional Education Lead
Pennine Care NHS Foundation Trust

CONTENTS

/	Supporting your organisation	pg.4
/	Why invest in apprenticeships?	pg.5
/	Our programmes	pg.6
/	Apprenticeship entry requirements	pg.16
/	How apprenticeships work?	pg.18
/	Application process	pg.19

SUPPORTING YOUR ORGANISATION WITH OUR EXPERTISE

We build strong relationships with organisations to create courses that enable our apprentices to take on the challenges of today's working world. Our staff are highly skilled and effectively support apprentices to achieve the required knowledge, skills and behaviours.

We have invested heavily in our campus and have state-of-the-art simulation facilities that enable our apprentices to acquire in-depth skills and understanding of their chosen occupation, whilst using the latest technologies.

Our employer partnerships are key to the success of our apprenticeships. These partnerships ensure that apprenticeships are in occupational areas where there is a shortage of trained staff and meet skills needs both locally and nationally.

“As Head of Apprenticeships for the School of Health and Society at the University of Salford, it is my responsibility to grow our apprenticeship provision and ensure our apprenticeships are of high quality, value for money and compliant with inspection and funding regulations.

We offer a rich and diverse number of cost-effective apprenticeship programmes that combine academic 'off the job' with 'on the job' training and assessment that is linked to the development and demonstration of occupational competence.

Employers choose the School of Health and Society as providers of their apprenticeship programmes because we are passionate about working with employers to ensure our apprenticeship provision meets their needs and produces apprentices who enhance their workforce and organisation.

In this brochure we have highlighted the diverse portfolio of apprenticeship programmes we currently offer or are in the process of developing. If you would like to discuss how we can work with you to enhance your organisation through apprenticeships, please do not hesitate to contact us.”

Dr Janine Archer,
Head of Apprenticeships,
j.e.archer@salford.ac.uk

WHY INVEST IN APPRENTICESHIPS?

BENEFITS FOR THE EMPLOYER



BENEFITS FOR THE APPRENTICE

- / Earn while you learn: in an industry that is committed to developing its employees
- / Receive recognised qualifications: an opportunity to study at university
- / Benefit from ongoing and personalised support from leading industry and academic professionals
- / Gain real work experience: improve your employability
- / Develop your skills: never thought you could take blood? Manage medicines? Protect vulnerable children and adults from harm? Now you can!

HOW WE CAN SUPPORT YOU

The Apprenticeship Service Unit at the University of Salford are here to support you throughout your apprenticeship journey. From admissions and onboarding to ongoing support throughout the apprenticeship, we are here to make the process as smooth as possible. We can even help you to advertise your vacancies if you are looking to recruit new staff. We're a small team but we are all passionate about what we do and committed to ensuring both you the employer and the apprentice themselves have the best possible experience.

Get in touch with us today at apprenticeships@salford.ac.uk and see how we can help you to develop your workforce.

OUR PROGRAMMES

We offer a range of apprenticeship programmes from Level 4 through to postgraduate (Level 7). Each apprenticeship programme will have different entry requirements and a funding band allocated to it. Please be mindful of this when looking into apprenticeships.

The key to the success of our apprenticeship programmes are their flexible delivery models. We recognise the need for apprentices to be applying their developing knowledge, skills and behaviours and so have developed delivery models to reflect this. Our programmes offer a mix of day-release, block delivery and online learning.

There will be a range of assessment methods depending on the programme. These may include examinations, essays and presentations etc. There will also be an End Point Assessment (EPA) which is a holistic and independent assessment of the knowledge, skills and behaviours which have been learnt throughout the apprenticeship.

An apprentice can only take the EPA once they have met the minimum duration of an apprenticeship, satisfied the gateway requirements (e.g. confirmation of Level 2 Maths and English such as GCSE or equivalent and the degree certificate) set out in the assessment plan and you (in consultation with the training provider) are content they have attained sufficient skills, knowledge and behaviours.

You can see our current programmes here: [**salford.ac.uk/apprenticeships**](https://salford.ac.uk/apprenticeships)



Advanced Clinical Practitioner Apprenticeship (ST0564)

MSc ADVANCED CLINICAL PRACTITIONER

About the programme

The Advanced Clinical Practitioner Master's Degree Apprenticeship is a programme for experienced Health Professionals who wish to advance their professional practise to independently manage holistic episodes of physical and mental healthcare in a range of settings. Working across traditional health and social care boundaries, Advanced Clinical Practitioners combine expert clinical skills with research, education and leadership to facilitate change in patient and service outcomes.

This multi-professional course places work at the centre of learning. Apprentices will have access to expertise and skills from a wide range of professionals including non-medical consultants, advanced clinical practitioners, medical practitioners and guest lecturers at the cutting edge of health and social care. Specialist pathways are also available in mental health, primary care, critical care and emergency and urgent care.

Who is it for?

We are looking for registered health professionals (Nurses, midwives and allied health professionals) or those from a regulated professional health or social care background.

Applicants should have been working in the appropriate clinical context for a minimum of two years and have between three to five years post qualification experience.

How long is the apprenticeship?

The apprenticeship takes two and a half years to complete.

What will be studied?

The first year may include core modules such as Clinical Examination and Pathophysiology with an option to undertake Non-Medical Prescribing or Contextualising Advanced Clinical Practice modules.

The second year of studies may include modules such as Project Management and Methods of Inquiry, Reasoning in Clinical Practice and Practitioner Competence.

The final module will be Advanced Clinical Practice preparation for End Point Assessment.

The work-based programme requirements enable the practitioner to develop core and bespoke clinical skills related to their field of practice. The practitioner needs to be working with a named clinical assessor in order to meet these requirements.

For further information please visit -

salford.ac.uk/courses/degree-apprenticeship/advanced-clinical-practitioner-advanced-clinical-practitioner-degree

Physiotherapy Degree Apprenticeship (ST0519)

BSc(Hons) PHYSIOTHERAPY

About the programme

The apprenticeship will provide apprentices with the knowledge and skills required by physiotherapists to provide evidence-based health care. Our physiotherapy graduates have excellent problem-solving skills, they are technically proficient, professionally aware and as such, move seamlessly into graduate practice.

Upon graduation, apprentices will be eligible to become a member of the Chartered Society of Physiotherapy and apply to be placed on the Health and Care Professions Council's (HCPC) Register of Physiotherapists.

The course benefits from dedicated and innovative teaching staff operating from purpose-built, state-of-the-art technical and learning facilities.

We are proud to say that in the Complete University Guide 2023 rankings our Physiotherapy course has been placed fifteenth nationally.

Who is it for?

We are looking for bright, motivated and dedicated applicants who can demonstrate a commitment to becoming a physiotherapist. Having an awareness of the broad range of physiotherapy practice is essential.

Successful apprentices will possess good social and communication skills, have a caring disposition, be team minded and a willingness to take part in interactive sessions.

How long is the programme?

The apprenticeship takes four years to complete.

What will be studied?

Apprentices will study a variety of modules that cover the scope of the profession throughout the programme. Modules may include Introduction to Collaborative Professional Practice, Assessment and Management, Principles of Exercise Training, Developing and Evaluating Health and Wellbeing Interventions, Cardiovascular and Respiratory Assessment and Management, Spinal Assessment and Management, Neurological Assessment and Management and Research in Physiotherapy Practice.

These modules will allow apprentices to develop their physiotherapy knowledge and skills across the scope of the profession. The final year of the programme develops apprentice's reflection and critical reasoning skills to allow transition to qualified practice.

For further information please visit -

salford.ac.uk/courses/degree-apprenticeship/physiotherapy-physiotherapist-degree-apprenticeship

Podiatrist Degree Apprenticeship (ST0493)

BSc (Hons) PODIATRY

About the programme

The degree apprenticeship offers a blend of experience from in house clinics, external NHS and private practice placements to equip graduates with the knowledge and skills required to provide evidence-based health care.

The programme contains relevant content from NHS, private industry and research partners, as well as Salford Business School to further enhance the apprentices' business skills.

Our podiatry graduates will acquire the reflective, critical thinking, reasoning and problem solving skills that are essential to professional practice. Graduates will have the knowledge and skills to improve the mobility, independence and quality of life for their patients.

Upon graduation, apprentices are eligible to become a member of the College of Podiatry and apply to be placed on the Health and Care Professions Council's (HCPC) register.

Who is it for?

We are looking for motivated and enthusiastic applicants who can demonstrate a commitment to becoming a podiatrist.

Successful apprentices will possess good communication skills, have a caring disposition and be team-minded. Practising techniques on each other in supervised mixed groups is the norm.

How long is the apprenticeship?

The apprenticeship takes three years to complete.

What will be studied?

Apprentices will study a variety of modules that cover the scope of the profession throughout the programme. Modules may include Integrated Life Science, Professional Studies, An Introduction to Gait, Musculoskeletal Conditions, Applied Clinical Medicine, Prescription Only Medicines, Local Anaesthesia, Diagnosis and Management and Enterprise in Podiatry.

The work-based programme requirements enable the practitioner to develop core and bespoke clinical skills related to their field of practice. The practitioner needs to be working with a named clinical assessor in order to meet these requirements.

“Studying for an apprenticeship is exciting and enables me to fulfil my ambition of becoming a qualified Podiatrist. The degree apprenticeship is a fantastic opportunity for me to continue in my already rewarding job and gain the skills and underpinning knowledge required to qualify as a Band 5 Podiatrist in the NHS.”

Beth Richardson, BSc (Hons) Podiatry,
Salford Royal NHS Foundation Trust

For further information please visit -
[salford.ac.uk/courses/degree-apprenticeship/
bsc-hons-podiatry-podiatrist-degree-apprenticeship](https://salford.ac.uk/courses/degree-apprenticeship/bsc-hons-podiatry-podiatrist-degree-apprenticeship)

Public Health Practitioner Degree Apprenticeship (ST0631)

BSc (Hons) PUBLIC HEALTH PRACTITIONER

About the programme

The BSc (Hons) Public Health Practitioner degree apprenticeship has been developed through consultation with Public Health England and employers in a range of public health-related fields, to meet the requirements of the UK Public Health Register. Successful completion will allow graduates to register as a Public Health Practitioner.

The degree apprenticeship provides a new route for developing and retaining the future public health workforce that is complementary to the academic route. This ensures that graduating apprentices are competent Public Health Practitioners in line with the [implementation guidance](#) and able to meet the future needs of employers.

Who is it for?

The BSc Public Health Practitioner Degree Apprenticeship is suitable for those working in a public-health related role who wish to develop their careers further, or those employed as a new entrant apprentice in a public-health related role.

Public Health Practitioners work as part of a national workforce that strives to help people and communities to maximise their potential for a healthy, happy and productive life, and to live healthier for longer.

The degree apprenticeship has been developed through consultation with Public Health England and employers working in a range of public health related fields to enable successful graduates to work in the field as registered Public Health Practitioners.

What qualification will be achieved?

With this qualification, apprentices will be well placed to apply for public health roles in local or national government health departments. The range of jobs varies widely, and can include health promotion, health policy development, research or health advocacy, either in the public, private, or voluntary and community sectors.

Full time apprentices on this course can apply for membership with The Royal Society for Public Health. Upon completion of the course apprentices are eligible to apply for a fellowship membership with The Royal Society for Public Health.

Apprentices who successfully complete the end-point assessment will be 'registration-ready' for professional registration as a Public Health Practitioner with the UK Public Health Register.

How long is the programme?

The apprenticeship takes three years to complete.

What will be studied?

Apprentices will study between one and two modules per trimester. Modules may include Evidence Based Health Promotion, Promoting the Public's Health and Wellbeing, Health Protection, Public Health Intelligence, Communicating Health and Health Risks, Collaborative Working in Public Health, Ethical Issues in Public Health, Leadership and Management in Public Health and Health Economics.

For further information please visit -

**[salford.ac.uk/courses/degree-apprenticeship/
public-health-practitioner-public-health-practitioner-degree](https://salford.ac.uk/courses/degree-apprenticeship/public-health-practitioner-public-health-practitioner-degree)**

Specialist Community Public Health Nurse Apprenticeship (ST0697)

PgDip SPECIALIST COMMUNITY PUBLIC HEALTH NURSE: HEALTH VISITING OR SCHOOL NURSING

About the programme

The Specialist Community Public Health Nurse - Health Visiting and School Nursing Apprenticeships have been designed to support registered nurses develop advanced skills and knowledge in public health within integrated community care.

Graduates will work collaboratively with health and social care services to coordinate services that meet the needs of children and their families. Utilising specialist skills in public health, they will promote health and well-being, support community engagement and put interventions in place to improve outcomes for children, families and the community.

On completion of the programme there is an optional dissertation module to achieve MSc in Integrated Care (one year).

Who is it for?

This programme is for professionals who seek to:

- / Develop a career in specialist community public health nursing
- / Complete a master's qualification and gain registration with the NMC as a Health visitor
- / Develop advanced, specialist skills in integrated care
- / Develop leadership and management skills, with an emphasis on working across integrated systems

- / Gain a qualification in non-medical prescribing (V100)
- / Develop competences and knowledge to practise autonomously and support a wide team to deliver person and family-centred care.

How long is the programme?

The apprenticeship takes one year to complete.

What will be studied?

It will be compulsory for apprentices to study Foundations and Principles in Integrated Care, Developing Healthy Communities and Integrated Practice, Specialist Public Health Nursing (Health Visiting). Apprentices will then have the choice to study three of the following modules:

Choice of three of the following modules:

- / Non-Medical Prescribing (V100)
- / Compassionate Digital Integrated Care (CDIC)
- / Quality in Integrated Care
- / Leading, Developing and Designing Integrated Systems

Overarching themes within all modules include advancing education, safeguarding, digital literacy, principles of integrated care and mental health and well-being.

The apprenticeship is completed on successful achievement of the EPA.

For further information please visit -
salford.ac.uk/courses/degree-apprenticeship/specialist-community-public-health-nurse-health-visiting

District Nursing Apprenticeship (ST0709)

PGDIP SPECIALIST PRACTITIONER: DISTRICT NURSING

About the programme

The Specialist Practitioner District Nursing Apprenticeship has been designed to support registered nurses to develop advanced skills and knowledge in public health within integrated community care.

The district nursing programme supports apprentices to develop advanced skills, knowledge and behaviours that support a whole-person, place-based approach. Graduates will have the specialist skills to support people to live independently and work with family and carers and support people at the end of life.

On completion of the programme there is an optional dissertation module to achieve MSc in Integrated Care (one year).

Who is it for?

This programme is for professionals who seek to:

- / Develop a career in specialist community nursing (District Nurses)
- / Complete a master's level qualification and gain registration with the NMC as District Nurses
- / Develop advanced, specialist skills in integrated care
- / Develop leadership and management skills, with an emphasis on working across integrated systems
- / Gain a qualification in non-medical prescribing (V300)
- / Develop competences and knowledge to practise autonomously and support a wide team to deliver person and family and community-centred care



- / Improve their critical appraisal skills and utilise the evidence base to make recommendations and instigate improvements in practice.

How long is the apprenticeship?

The apprenticeship takes one year to complete.

What will be studied?

It will be compulsory for apprentices to study Foundations and Principles in Integrated Care, Developing Healthy Communities and Integrated Practice, Specialist Community District Nursing and Non-Medical Prescribing (V300). Apprentices will then have the choice to study one of the following modules:

- / Compassionate digital integrated care (CDIC)
- / Quality in Integrated Care
- / Leading, developing and designing integrated systems

Overarching themes within all modules include advancing education, safeguarding, digital literacy, principles of integrated care and mental health and well-being.

The apprenticeship is completed on successful achievement of the EPA.

For further information please visit - salford.ac.uk/courses/degree-apprenticeship/specialist-practitioner-district-nursing-apprenticeship

Nursing Associate Apprenticeship (ST0827)

FdSc TRAINEE NURSING ASSOCIATE

About the programme

The Nursing Associate is a highly trained support role to deliver effective, safe and responsive nursing care in and across a wide range of health and care settings. This role will bridge the gap between a support worker and a Registered Nurse, providing a workforce for future healthcare.

The apprenticeship will train Nursing Associates to work independently, and as part of the healthcare team, delivering care in a range of primary, secondary, community and social care settings. Apprentices will learn to deliver hands-on care, focusing on ensuring patients continue to get the compassionate care they deserve.

At the end of the programme, apprentices will achieve a Level 5 Foundation Degree as a Nursing Associate.

Who is it for?

The Nursing Associate apprenticeship programme is for Healthcare Assistants / Clinical Support Workers who are looking for a new challenge and an opportunity to develop and progress their career within healthcare.

How long is the programme?

The apprenticeship programme is a two year programme leading to a Nursing Associate Foundation Degree.

What will be studied?

Apprentices will study six modules in total throughout the programme. The first year will comprise of modules such as; Foundations of Health and Wellbeing, Application of Skills to Support Health and Wellbeing 1 and Application of Skills to Support Health and Wellbeing 2. These modules will allow apprentices to develop their professionalism, interpersonal skills and find out more about human anatomy, person-centred care, safeguarding and public health and health promotion.

The second year of the programme will include modules such as; Introduction to Reflective Practice, Exploring Specific Health Issues and Developing and Changing Practice. These modules will develop knowledge of long-term conditions, medication management, supporting and developing others, service improvement and nursing interventions.

The apprenticeship is completed on successful achievement of the EPA.

“During my apprenticeship I've been given many valuable opportunities to engage with staff and patients. This has allowed me to gain first-hand experience of the various fields of practice. It has helped me gain confidence in my own abilities and given me many chances to learn from others and benefit from their knowledge. It is these opportunities that, in my opinion, make this nursing apprenticeship so worthwhile.”

Paul Martin Smith, FdSc Nursing Associate (Foundation Degree).
Northern Care Alliance NHS Foundation Trust

For further information please visit -

[salford.ac.uk/courses/degree-apprenticeship/
nursing-associate-nursing-associate-higher-apprenticeship](https://salford.ac.uk/courses/degree-apprenticeship/nursing-associate-nursing-associate-higher-apprenticeship)

Police Constable Degree Apprenticeship (ST0304)

BSC (HONS) PROFESSIONAL POLICING PRACTICE

About the programme

This programme will help apprentices develop their skills, knowledge and understanding to carry out the role of a police constable in a competent, safe, and lawful manner. You will be employed by Greater Manchester Police (GMP) as a police constable throughout the duration of this course.

There are a range of teaching and learning strategies for this programme which will provide you with a combination of academic skills, and knowledge alongside operational skills.

You will be serving as a police officer with GMP whilst studying academic modules. This will include a combination of campus-based studying along with policing training. This will enable you to link the academic skills and knowledge you develop with the operational competences you will demonstrate.

Alongside traditional training methods, the programme uses a range of approaches and resources to allow you to develop your critical thinking and become a confident independent learner. The use of simulation exercises will be a key feature of the programme as these exercises promote the value of critical and evaluative thinking.

Who is it for?

This is an incredible opportunity for those who are passionate about delivering the highest quality policing, to really make a difference to communities who deserve the best.



What qualification will be achieved?

Upon successful completion of the course, you will achieve a BSc degree in Professional Policing Practice and a role with GMP.

How long is the programme?

The typical duration for this apprenticeship is 3 years and is delivered on a full-time basis.

What will be studied?

There are a range of teaching and learning strategies for this programme which will provide you with a combination of academic skills, and knowledge alongside operational skills

Modules include:

- / Operational Policing
- / GM Communities and Partnerships
- / Strategic Leadership
- / Community Policing in GM

For further information please visit -

[salford.ac.uk/courses/degree-apprenticeship/
bsc-hons-professional-policing-practice-police-constable-degree](https://salford.ac.uk/courses/degree-apprenticeship/bsc-hons-professional-policing-practice-police-constable-degree)

APPRENTICESHIP ENTRY REQUIREMENTS

For employees who already work within your company and those who are new to the role, there are a number of entry criteria set by both the government and by the University which individuals need to meet in order to undertake an apprenticeship programme.

TO BE ELIGIBLE, APPRENTICES MUST:

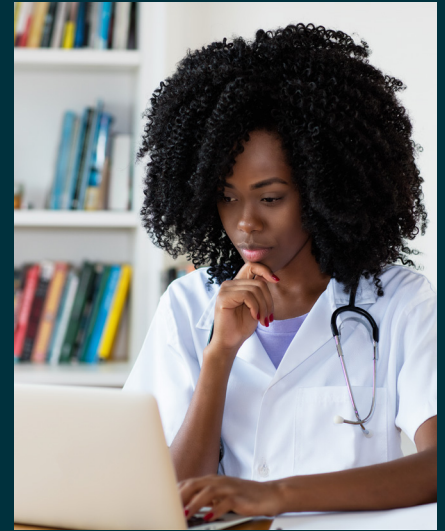
- / Have the right to work in England
- / Spend at least 50% of their working hours in England
- / Work for you, a connected company or connected charity as defined by HMRC
- / Be employed in a full-time role and work a minimum of 30 hours per week
- / Be employed in a relevant role to the apprenticeship programme they are applying for
- / Meet the standard academic entry requirements of the programme (this may include GCSEs, A Levels, BTECs, undergraduate degree etc.)



HOW APPRENTICESHIPS WORK?

Apprenticeships must last a minimum of 12 months and involve at least 6 hours per week off-the-job training. This 6 hours per week off-the-job training requirement is measured over the course of an apprenticeship. The off-the-job training is an essential part of an apprenticeship and therefore must take place during paid working hours.

Off-the-job training is defined as learning which is undertaken outside of the normal day-to-day working environment and leads towards the achievement of an apprenticeship. This can include training that is delivered at the apprentice's normal place of work but must not be delivered as part of their normal working duties. The off-the-job training must be directly relevant to the apprenticeship standard, teaching new knowledge, skills and behaviours required to reach competence in the particular occupation.



WHAT THIS INCLUDES:

- / The teaching of theory (lectures, simulation exercises, online learning etc.)
- / Practical training (shadowing, mentoring, industry visits, attendance at conferences)
- / Learning support and time spent writing assignments

WHAT THIS DOES NOT INCLUDE:

- / Progress reviews
- / Training which takes place outside of apprentice's paid working hours
- / Training to acquire skills, knowledge and behaviours that are not required in the apprenticeship standard

All off-the-job training must take place during paid hours. Apprentices may choose to spend additional time on training outside their paid hours, but this must not be required to complete the apprenticeship.

We will provide a means of tracking the 6 hours per week off-the-job by way of an apprenticeship time-sheet.

FUNDING BANDS



All apprenticeship standards have a funding band attached to them. There are 30 funding bands with the upper limit of the bands ranging from £1,500 to £27,000. The upper limit of the band represents the maximum amount of funds an employer who pays into the levy can use towards the apprenticeship. It also represents the maximum amount the government will co-invest for non-levy payers. You can find more information on the funding bands here:

[gov.uk/government/publications/apprenticeship-funding-bands](https://www.gov.uk/government/publications/apprenticeship-funding-bands)

APPLICATION PROCESS

1

Employers please get in touch with us at **apprenticeships@salford.ac.uk** and we will send you our Request For Services (RFS) form to complete.

2

Once this has been completed, signed and returned a joint interview can take place with the apprentice.

3

We will then send out a link to the online application, our admissions team will then check entry criteria.

4

We will send them the link to the on-boarding system where we will conduct assessments of prior learning, experience and current level of maths and English.

5

Once all checks are complete we will offer a conditional offer and start to prepare the employer evidence pack, this includes the contract and this includes the contract, Apprenticeship Agreement and Training Plan.



University of
Salford
MANCHESTER

Find out more about Apprenticeships at the University of Salford and how we can help you develop your workforce in a cost-effective manner.

Email: apprenticeships@salford.ac.uk

Phone: 0161 295 3063

Website: salford.ac.uk/apprenticeships